



Guilford Street

Bloomsbury, London, WC1N 1DF

£1,350 Per Week

This is a beautifully positioned three bedroom, two bathroom apartment situated on the raised ground floor of a well-presented residential building benefiting from a sunny private decked rear terrace.

This fine property is conveniently located moments away from Russell Square underground and a short walk to Holborn and Kings Cross stations. The property comprises of:- Entrance hallway, open plan living room/kitchen with dining area. Three double bedrooms, master having an en-suite bathroom/WC and access to a lovely private decked terrace, second bathroom.

The flat benefits from gas central heating, secure entry. The current tenants are due to vacate at the end of JULY and this flat is offered furnished. This flat is perfect for THREE sharers or a family rental.

- Three Double Bedrooms
- Two Bathrooms
- Raised Ground Floor
- Private Decked Terrace
- Next to Russell Square
- Short Walk into the West End

Viewing

Please contact our Messila Residential Office on 020 7586 6699 if you wish to arrange a viewing appointment for this property or require further information.



3



2



1



B

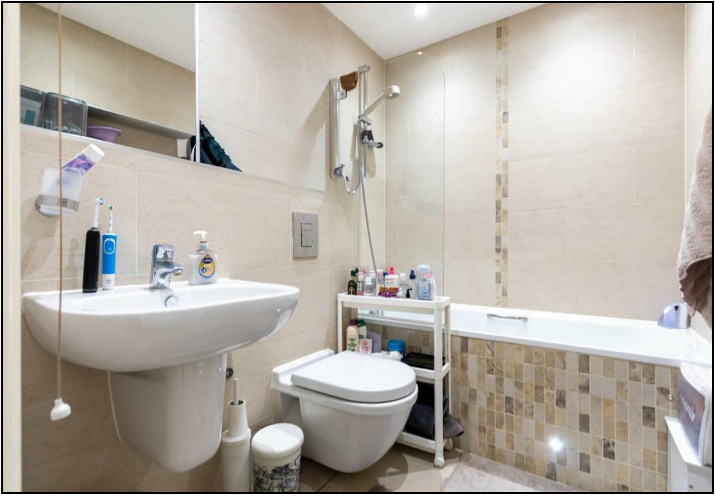
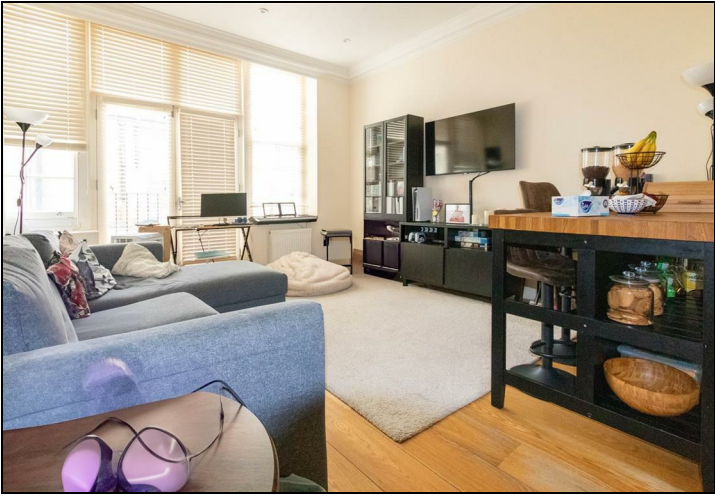
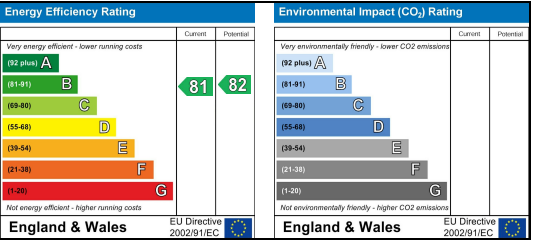
Floor Plan



Area Map



Energy Efficiency Graph



These particulars, whilst believed to be accurate are set out as a general outline only for guidance and do not constitute any part of an offer or contract. Intending purchasers should not rely on them as statements of representation of fact, but must satisfy themselves by inspection or otherwise as to their accuracy. No person in this firms employment has the authority to make or give any representation or warranty in respect of the property.