



Cendal Crescent, London E1

Guide price £350,000 Leasehold





Description

This bright and modern living space of 424 sq ft studio apartment, features an open-plan layout with an integrated kitchen, a partitioned sleeping area with large fitted wardrobes, a porcelain-finished bathroom, tiled flooring, and ample storage.

The Silk District is a new development from Mount Anvil and offers residents fantastic amenities which include 24 hour concierge, on site gym, cinema room, rooftop gardens and resident's lounge. The development is within easy reach of the City of London and in the heart of the Whitechapel regeneration area, approximately 0.3 miles from Whitechapel Underground / Crossrail station.

Leasehold 991 years (exp. 31/12/3017)
Ground Rent: Approx. £300 pa
Service Charge: Approx. £2,992 pa
Council Tax Band: D
EPC Rating: B



- Bright and modern studio apartment
- Bathroom with porcelain finish
- Large fitted wardrobes
- 24-hour concierge
- On-site amenities including gym, cinema, rooftop garden & residents lounge

0.3 miles from Whitechapel Underground & Crossrail Station

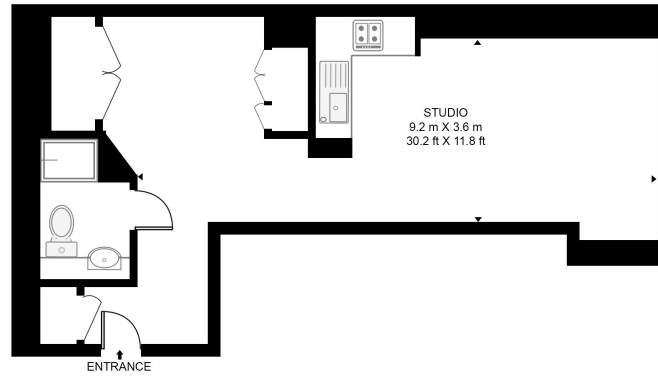
Approx 424 sq ft. / 39.4 sq m

Floorplan

424 sq ft | 39 sq m

THE BOUCHON, SILK DISTRICT

APPROXIMATE GROSS INTERNAL FLOOR AREA 424 SQ.FT (39.4 SQ.M)



FIFTH FLOOR



This floor plan has been defined by the RICS Code of Measurement. This floor plan and all others are for approximate representative purposes only and upon usage is agreed to as such by the client.
WWW: hdvirtualart.com | TEL: 0203.974.1567 | EMAIL: info@hdvirtualart.com

City
25 Walbrook The Walbrook
Building,
London EC4N 8AF
+4420 7337 4000

Urban living, your way.

jll.co.uk/residential

© 2019 Jones Lang LaSalle IP, Inc. All rights reserved. All information contained herein is from sources deemed reliable; however, no representation or warranty is made to the accuracy thereof.

