



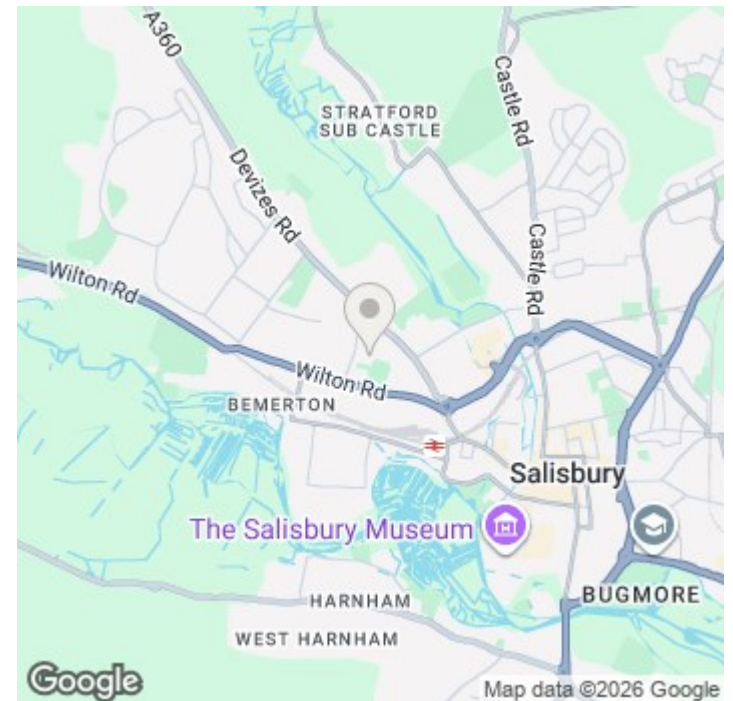
20 Jay Rise, Salisbury, Wiltshire, SP2 7FL

£1,150 PCM

About The Property

Well-presented two-bedroom flat in Jay Rise, Salisbury, offering modern interiors, excellent storage, two parking spaces, a garage, and a garden. Conveniently located close to local amenities with EPC rating C and Council Tax Band B.

- Two-bedroom flat
- Modern fitted kitchen
- Gas hob & electric oven
- Shower over bath
- Laminate flooring throughout
- Ample storage space
- Two parking spaces
- Garage included
- Garden
- Close to local amenities





Further Information

Let available date: 12th June 2026
 NB: This date is provisional and will only be confirmed once referencing has been successfully completed.

Property type: Flat

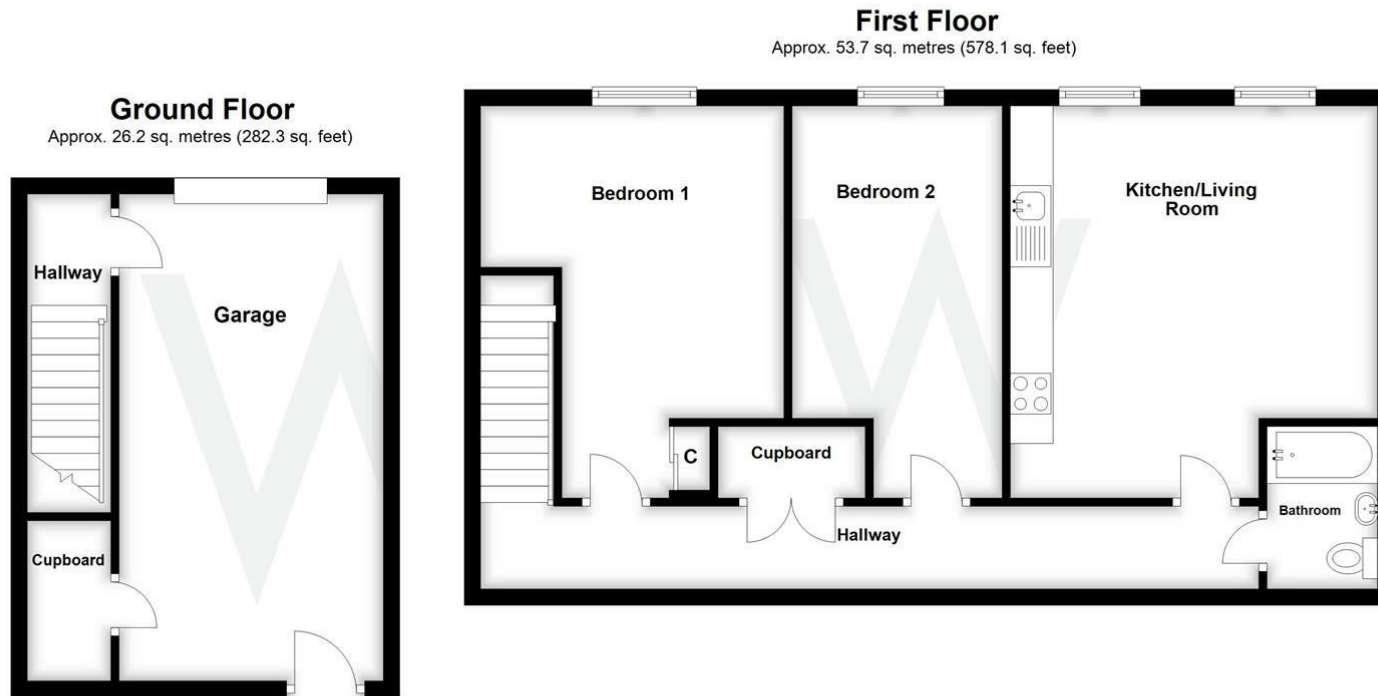
Furnish type: Unfurnished

Deposit: £1,325

Local authority:

Council Tax: Band B

EPC: (null)



Total area: approx. 79.9 sq. metres (860.3 sq. feet)

Energy Efficiency Rating

| | Current | Potential |
|---|----------------------------|-----------|
| Very energy efficient - lower running costs | | |
| (92 plus) A | | |
| (81-91) B | | |
| (69-80) C | | |
| (55-68) D | | |
| (39-54) E | | |
| (21-38) F | | |
| (1-20) G | | |
| Not energy efficient - higher running costs | | |
| England & Wales | EU Directive 2002/91/EC | |