



Wickham Road, Harrow Weald

£625,000 Freehold

This extended end-of-terrace home offers spacious and well-appointed accommodation, featuring four bedrooms and two bathrooms on the first floor. The ground floor comprises a bright through lounge, an additional family room, and a contemporary white high-gloss kitchen with matching worktops.

Further benefits include double glazing, gas central heating, and ample off-street parking to the front of the property.

**EPC Rating: C
Council Tax Band: D**

- Four Bedroom Home • Extended • Through Lounge & Family Room • Two Bathrooms • Guest Cloakroom • Ample Off Street Parking



Wickham Road, Harrow Weald

£625,000 Freehold

FURTHER DETAILS

The accommodation comprises of an entrance hall with guest cloakroom, a through lounge, a separate family room, and a modern white high gloss kitchen on the ground floor. To the first floor are four bedrooms and two bathrooms. Outside there is ample off street parking to the front and a small courtyard garden to the rear.

LOCATION

Wickham Road is a sought-after residential road in Harrow Weald, conveniently located close to a range of local shops, well-regarded schools, parks, and leisure facilities. Excellent transport links, including nearby stations and major road networks, provide easy access to Central London and the surrounding areas, making it an ideal location for families and commuters alike.

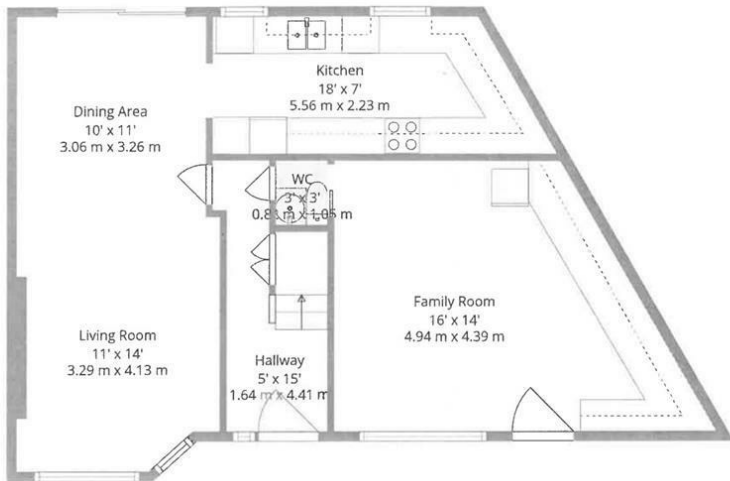
CONTACT RAWLINSON GOLD

If you would like to arrange a viewing or discuss any aspect of this property we can be contacted by telephone on 020 8861 2020 or by email on harrow@rawlinsongold.co.uk.

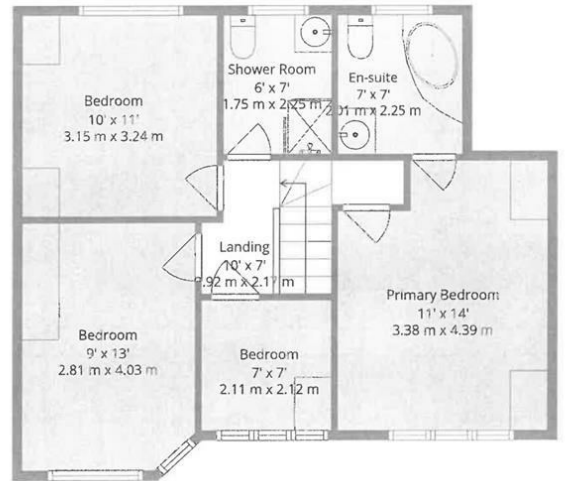
FREE MARKET APPRAISAL

Please contact our Harrow Office if we can be of assistance with the sale or rental of your current property.





Ground Floor



1st Floor

TOTAL: 1300 sq. ft, 121 m2
 Ground floor: 700 sq. ft, 65 m2, 1st floor: 600 sq. ft, 56 m2
 EXCLUDED AREAS: WALLS: 110 sq. ft, 10 m2

Floor Plan Created By Cubicasa App. Measurements Deemed Highly Reliable But Not Guaranteed.

