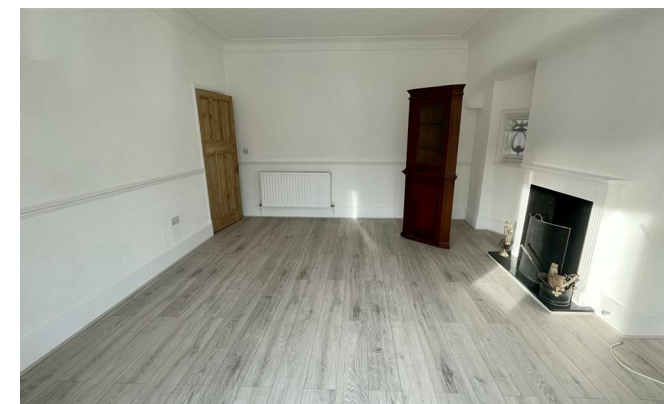


**HS HAIR & SON**



## Gloucester Terrace

, Southend-on-Sea SS1 3AZ

- GROUND FLOOR FLAT
- LARGE LOUNGE
- ONE DOUBLE BEDROOM
- UPVC DOUBLE GLAZING AND GAS CENTRAL HEATING THROUGHOUT
- CLOSE TO THORPE BAY SEAFRONT AND TRAIN STATION
- INVESTMENT PURCHASE WITH TENANT IN SITU
  - BATHROOM WITH SHOWER CUBICLE
- GENEROUS REAR GARDEN AND OFF ROAD PARKING FOR ONE CAR

**Guide Price £325,000 Leasehold**

Local Authority **Southend on Sea Borough Council**  
Council Tax Band **C**  
EPC Rating **D**



**Sales Office**  
190 London Road, Southend-On-Sea,  
Essex, SS1 1PJ

**Contact**  
01702 34 11 77  
<https://hairandson.co.uk/>

Agents Note: Whilst every care has been taken to prepare these particulars, they are for guidance purposes only. All measurements are approximate and for general guidance purposes only and whilst every care has been taken to ensure accuracy, they should not be relied upon and potential buyers/tenants are advised to recheck the measurements.