



## Grosvenor Hill Court

Bourdon Street, Mayfair, W1K 3PX

£1,300 Per Week

This is a stylish three double bedroom apartment located on the second floor (WITH LIFT) of this extremely well maintained building right in the heart of Mayfair (just a stone's throw from the world renowned Claridge Hotel). Benefiting from a lush communal roof garden and welcoming front entrance with day Porter. This fine property comprises of:- Entrance hallway, reception room leading off to a small private balcony, separate fitted kitchen, Three double bedrooms (master with en-suite bathroom), second Shower/WC. This property has been recently furnished throughout and has been newly decorated. This building benefits from having lifts and day porter with secure entry. The property is within 5 minutes walk to Bond Street Station, Hanover Square and Regent Street. This property is offered furnished and is available FROM EARLY JUNE 2026.

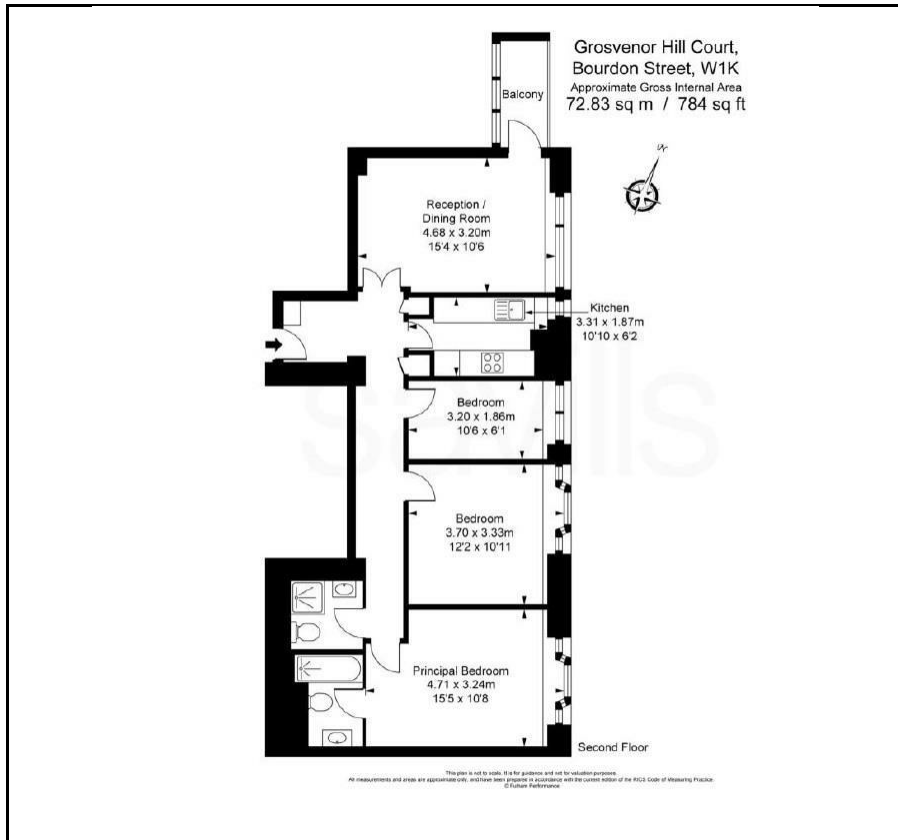
- Three Double Bedrooms
- Two Bathrooms
- second Floor
- secure Entry
- Day Porter
- Balcony

### Viewing

Please contact our Messila Residential Office on 020 7586 6699 if you wish to arrange a viewing appointment for this property or require further information.



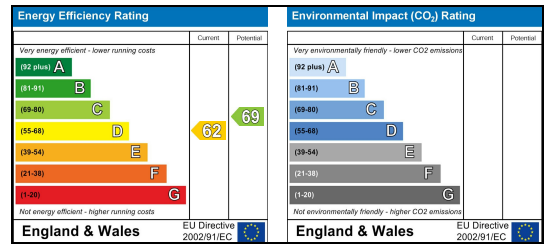
## Floor Plan



## Area Map



## Energy Efficiency Graph



These particulars, whilst believed to be accurate are set out as a general outline only for guidance and do not constitute any part of an offer or contract. Intending purchasers should not rely on them as statements of representation of fact, but must satisfy themselves by inspection or otherwise as to their accuracy. No person in this firm's employment has the authority to make or give any representation or warranty in respect of the property.

**Messila Residential**

137 Park Road, London, NW8 7HT

T: 020 7586 6699 E: regentspark@messilaresidential.com W: messilaresidential.com