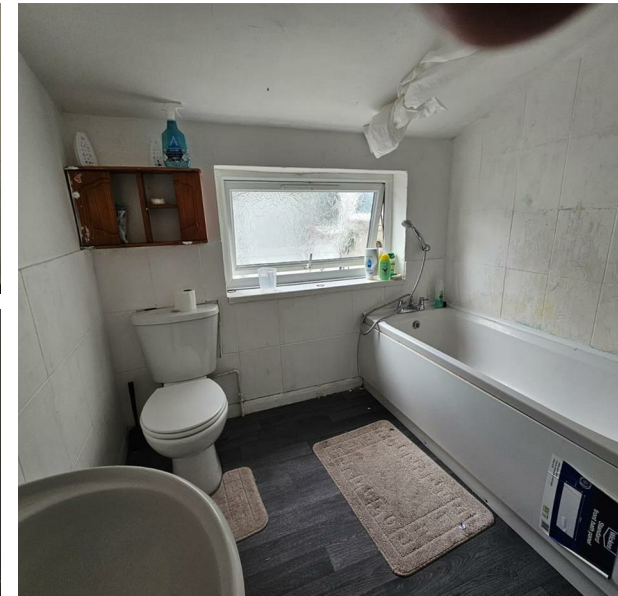
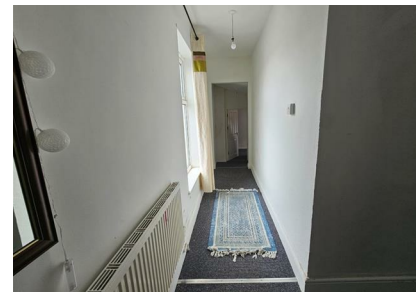


Willingham Street, Grimsby, DN32 9BP

£650

Council Tax Band: A



Spacious 4-Bedroom End-Terrace House – Great Location in Grimsby

Available now, this spacious and well-presented 4-bedroom end-of-terrace house is ideal for families or professionals seeking a long-term rental in a central location.

Key Features:

4 Bedrooms

1 Bathroom

2 Reception Rooms – Ideal for living and dining areas

Unfurnished – Personalise the space to your taste



Mayfair Estate Agents Powered by Open House



Energy Efficiency Rating		
	Current	Potential
Very energy efficient - lower running costs		
(92 plus) A		
(81-91) B		
(69-80) C		
(55-68) D		
(39-54) E		
(21-38) F		
(1-20) G		
Not energy efficient - higher running costs		
England & Wales		
EU Directive 2002/91/EC		