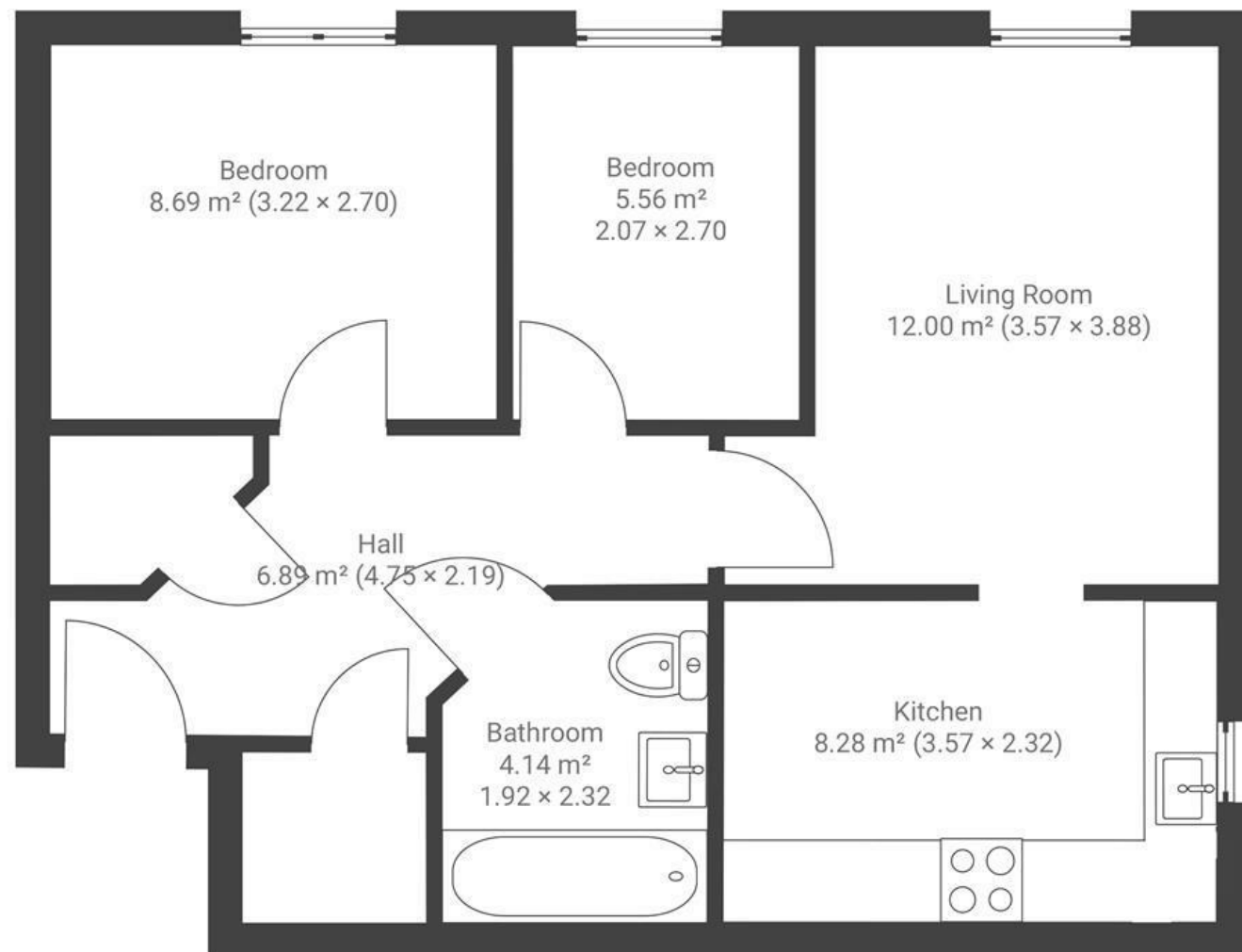


Wick Road

BRISLINGTON

APPROXIMATE FLOOR AREA
58 SQM / 624 SQFT



Boardwalk

Wick Road

, BRISTOL

£

£230,000



BS4 4QD

zzz

2 Bedrooms



1 Bathrooms

"We've loved the beautiful walks in Nightingale Valley and St Anne's Wood, a great selection of local shops and cafés, and an easy commute into town. Watching balloons drift over the city and enjoying the sunsets, along with quiet and friendly neighbours, has truly made it feel like home."

