



6 Cobton Drive, Hove
£800,000

**MANSELL
McTAGGART**
Trusted since 1947

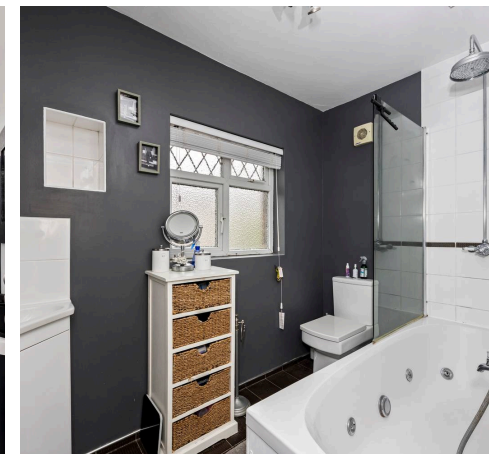
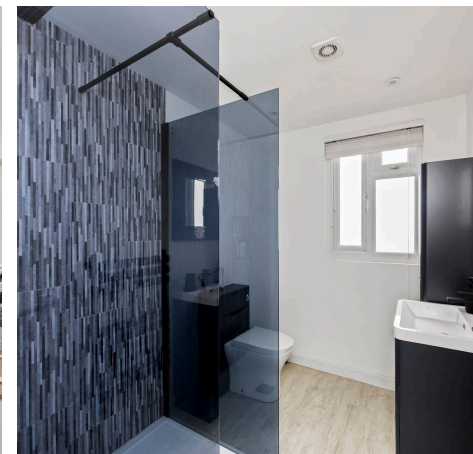
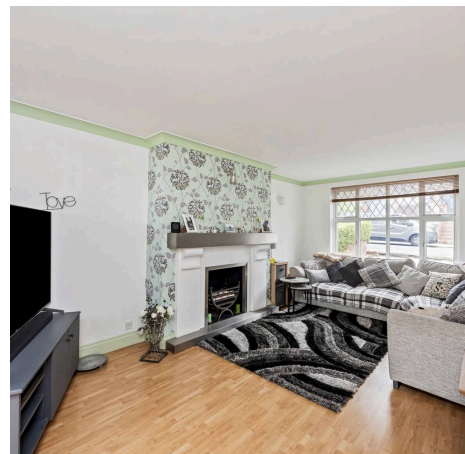
6 Cobton Drive

Hove

Council Tax band: E

Tenure: Freehold

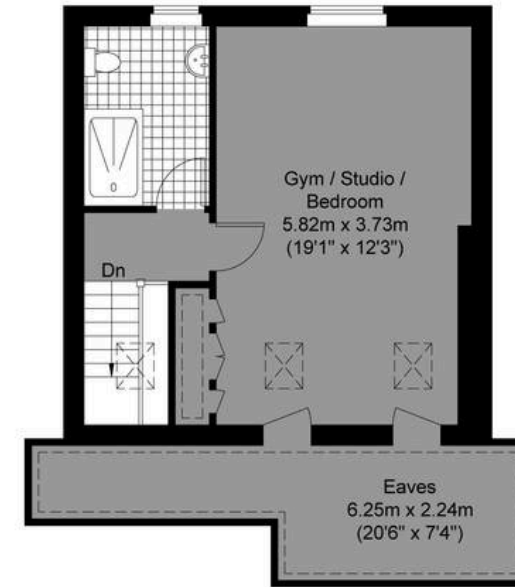
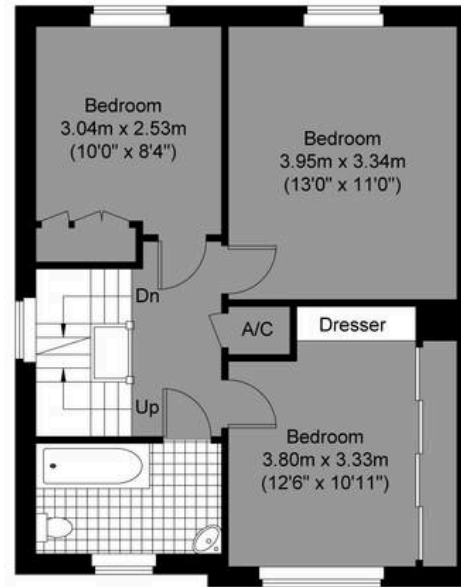
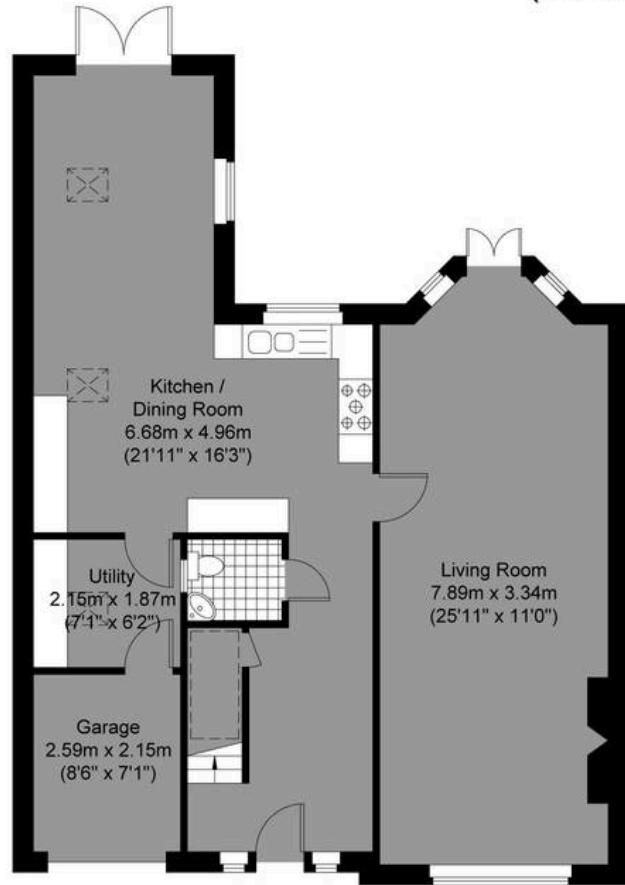
- Four Bedroom Semi-Detached Family Home With Off Road Parking & Garage
- Recently Extended Into The Loft With Double Bedroom, Bathroom And Eave Storage
- Kitchen Leads Out To Dinning Room And French Doors To Rear Garden
- Huge Kitchen With Range Gas Cooker And Ample Storage Space
- South West Facing Two Tiered Garden With Huge Terrace And Stunning Views Across The City
- Excellent Location Close To Everything Hove Has To Offer, Including Excellent Schools, Transport Links And Hove Park
- Exclusive To Mansell McTaggart
- Dual Aspect Living Room With Lots Of Natural Light And Doors Out Onto Garden



Approximate Gross Internal Area= 157.0 sq m / 1689.93 sq ft
 (Including Garage & Excluding Eaves)

**MANSELL
 McTAGGART**

— Trusted since 1947 —



Cobton Drive

Ground Floor
 Approximate Floor Area
 818.81 sq ft (76.07 sq m)

First Floor
 Approximate Floor Area
 516.56 sq ft (47.99 sq m)

Second Floor
 Approximate Floor Area
 354.56 sq ft (32.94 sq m)



Illustration for identification purposed only, measurements are approximate, not to scale.

© Mansell McTaggart



Mansell McTaggart Hove

170 Church Road, Hove - BN3 2DJ

01273 044929

hove@mansellmctaggart.co.uk

www.mansellmctaggart.co.uk/branch/hove/

