



**WHITEHORNES**

Buy. Sell. Let. Relax!

0114 268 8533  
info@whitehornes.com  
www.whitehornes.com



**38 Osborne Road, Brincliffe**

Sheffield

**Guide Price £340,000**

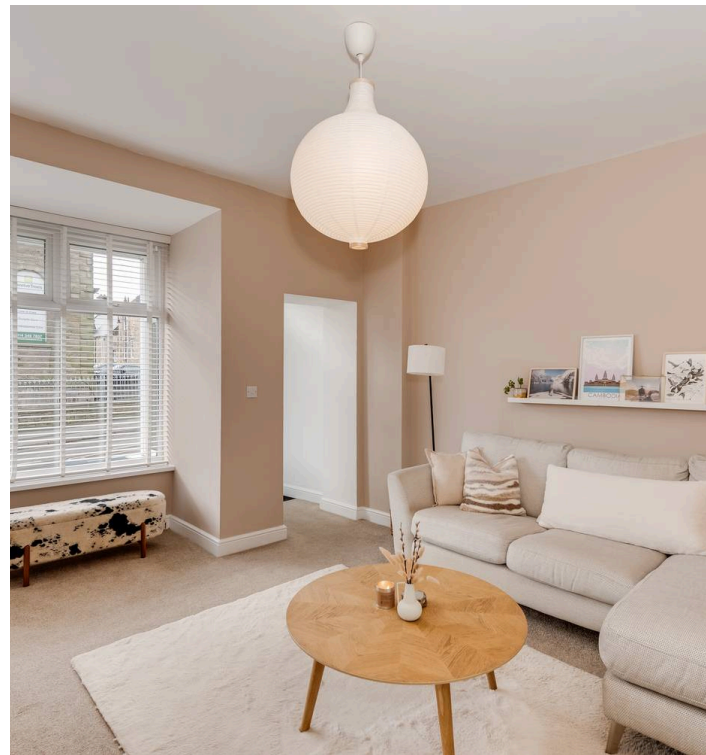
# 38 Osborne Road

Brincliffe, Sheffield

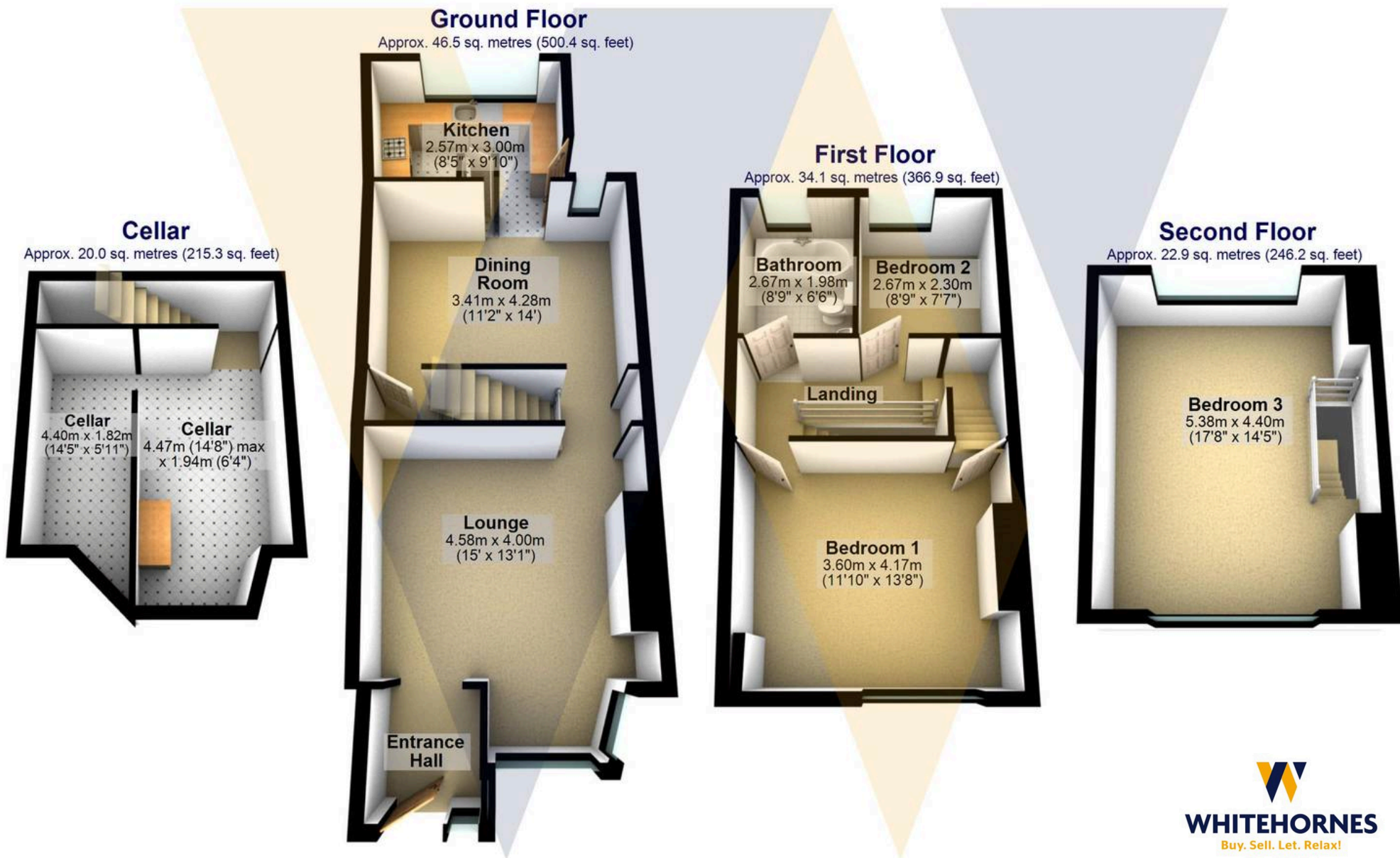
This sensational three double bedroom, stone-built Victorian bay windowed terrace offers an exceptional opportunity to acquire a beautifully finished home in the heart of sought-after Nether Edge. Arranged over three impressive floors and totalling approximately 1,328 square feet, the property has been meticulously renovated by the current vendors, blending original period features with a contemporary, high-end finish, where every detail has been thoughtfully considered. The ground floor comprises a welcoming entrance hallway, a spacious bay-fronted living room, and a stylish open-plan kitchen

Council Tax band: B Tenure: Leasehold

- SENSATIONAL THREE DOUBLE BEDROOM STONE BUILT VICTORIAN BAY WINDOWED TERRACE
- FINISHED INTERNALLY TO THE HIGHEST OF STANDARDS BY THE CURRENT VENDORS WITH A FLARE FOR DESIGN AND NO EXPENSE SPARED
- THREE STUNNING FLOORS OF ACCOMMODATION TOTALLING AN IMPRESSIVE 1,328 SQ FEET
- NUMEROUS BEAUTIFUL PERIOD ORIGINAL FEATURES CHARACTER AND CHARM ASSOCIATED WITH A PROPERTY FROM THIS ERA AND EFFORTLESSLY COMBINING A CONTEMPORARY HIGH END STYLISH FINISH
- LOFT MASTER BEDROOM WITH WALK IN DORMER WINDOW AND SOME INCREDIBLE VIEWS
- EXCELLENT SCHOOLING CATCHMENTS INCLUDING HUNTERS BAR JUNIORS AND HIGH STORRS/MERCIA SECONDARY







Total area: approx. 123.4 sq. metres (1328.7 sq. feet)

All measurements are approximate  
Plan produced using PlanUp.

**38 Osbourne Road**

  
**WHITEHORNES**  
Buy. Sell. Let. Relax!

0114 268 8533  
info@whitehorns.com  
www.whitehorns.com