



Searle Crescent, Broomfield

Guide Price £220,000



Searle Crescent

Broomfield, Chelmsford

A stylishly presented, modern one double bedroom first floor flat including spacious open-plan kitchen/reception room, bathroom and an allocated parking space all conveniently positioned within sought-after Broomfield providing easy access in to Chelmsford City centre.

Council Tax band: B

Tenure: Leasehold

EPC Energy Efficiency Rating: B

EPC Environmental Impact Rating: B

Important information:

Council Tax Band - B (£1757.84 per annum).

Services - We understand that mains water, drainage, gas and electricity are connected to the property.

Tenure - 243 years remaining (250 years from 1/01/2019 expiring on 31/12/2268).

Ground Rent - £204 per annum and increases every 10 years of the term in line of RPI.

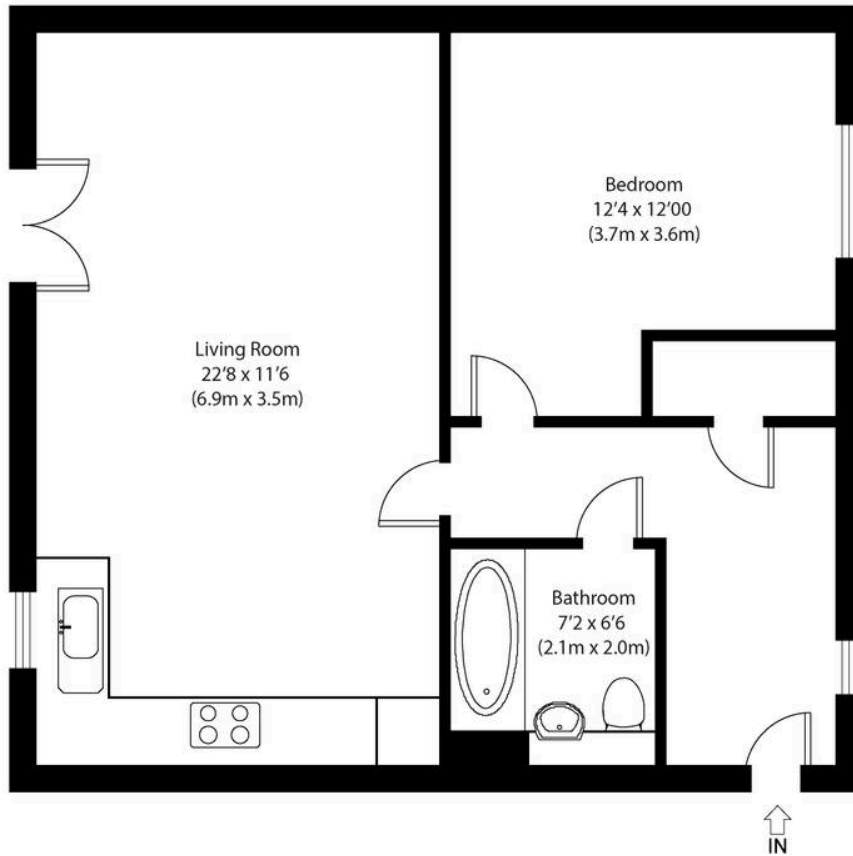
Service charge - £1472 per annum (paid half yearly).

The above details are subject to confirmation from the management company and/or, these charges are for the current year and maybe subject to change.









First Floor
Approximate Gross Internal Area
550 sq ft (51 sq m)

Disclaimer: Floorplan measurements are approximate and are for illustrative purposes only. While we do not doubt the floor plan accuracy and completeness, you or your advisors should conduct a careful, independent investigation of the property in respect of monetary valuation. copyright www.photohausgroup.co.uk





Nested Chelmsford

Fora, 9 Dallington Street, London - EC1V 0LN

01245 970045 • jack.gundry@nested.com • nested.com/chelmsford