



Guide Price
£160,000

Leasehold

1x  1x  1x 

**Crown Road,
Sittingbourne, Kent,
ME10**

OVER 60?

Secure this property
for up to **59% less!**

Wards
Helping you move forwards



Main features

- Walking distance to railway station
- Spacious lounge/diner
- Fitted kitchen with ample storage
- Well-proportioned double bedroom
- Private enclosed rear garden
- Gated allocated parking to the rear
- Chain free, long lease and low service charge

Accommodation

GROUND FLOOR

Entrance Hall

Bedroom: 9'4 x 9'1 (2.85m x 2.77m)

Bathroom

Lounge/Dining Area: 17'2 x 9'6
(5.24m x 2.90m)

Kitchen: 8'6 x 7'8 (2.59m x 2.34m)

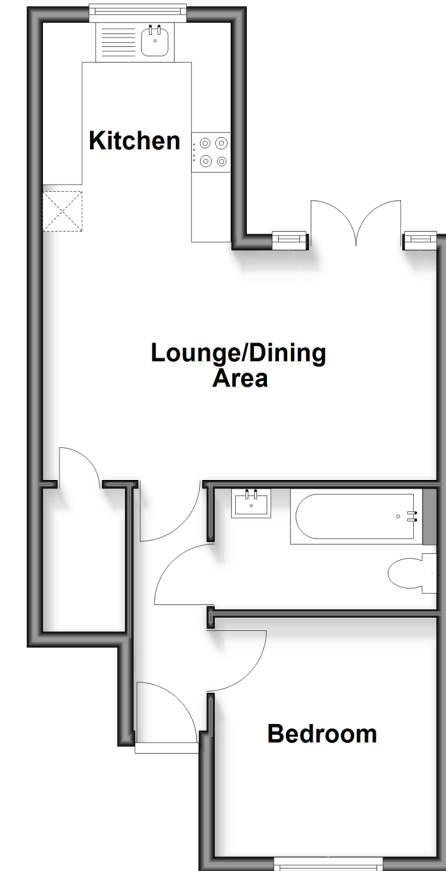
OUTSIDE

Rear Garden

Allocated Parking

Ground Floor

Approx. 40.2 sq. metres (432.4 sq. feet)



Call Sittingbourne - 01795 427272 ■ wardsofkent.co.uk

■ Through a Homewise Home For Life Plan people aged 60+ can secure this property for up to 59% less, by purchasing a Lifetime Lease



11739022/20260319/MC1/PH