



Putney High Street

London, SW15

Asking Price £500,000

Located in the heart of Putney, this bright and characterful period flat offers approximately 614 sq. ft. of well-proportioned accommodation and benefits from impressive ceiling heights throughout. An ideal purchase for a first-time buyer seeking a vibrant and highly convenient location.

CHESTERTONS



Putney High Street

London, SW15

- Two double bedrooms
- Central Putney location
- Period property
- Separate living room, flooded with natural light
- Tall ceilings
- 0.3 miles to Putney Station
- 0.4 miles to Putney Bridge (district line)



Located in the heart of Putney, this bright and characterful period flat offers approximately 614 sq. ft. of well-proportioned accommodation and benefits from impressive ceiling heights throughout. An ideal purchase for a first-time buyer seeking a vibrant and highly convenient location.

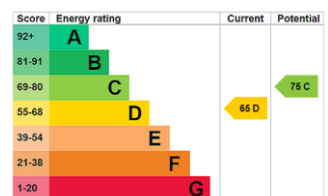
Positioned on the corner of Putney High Street and Weimar Street, the property is perfectly placed just moments from Putney's excellent range of shops, cafés, restaurants, transport links and local amenities.

The accommodation comprises two generous double bedrooms, a well-appointed family bathroom, and a separate fitted kitchen offering ample storage and preparation space.

The standout feature of the flat is the spacious reception room, enhanced by tall ceilings and large windows that flood the space with natural light. The room comfortably accommodates both living and dining areas, making it ideal for entertaining as well as everyday living.

This period building is situated on the corner of Putney High-Street and the Lower Richmond Road, lying beside the River Thames and close to Putney Bridge and Putney High Street where the Mainline Station (Waterloo) is situated. The closest underground is Putney Bridge (District Line). There is also an extensive bus network and the number 22 bus goes directly to Oxford Circus. The Thames Clipper service runs down the river from Putney Pier to Blackfriars and beyond.

Tenure: Leasehold (Expiry: 23/06/2180)
Service Charge: £913.12 plus insurance £531.67 p.a.
Ground Rent: £100 p.a.
Local Authority: London Borough of Wandsworth
Council Tax Band: E

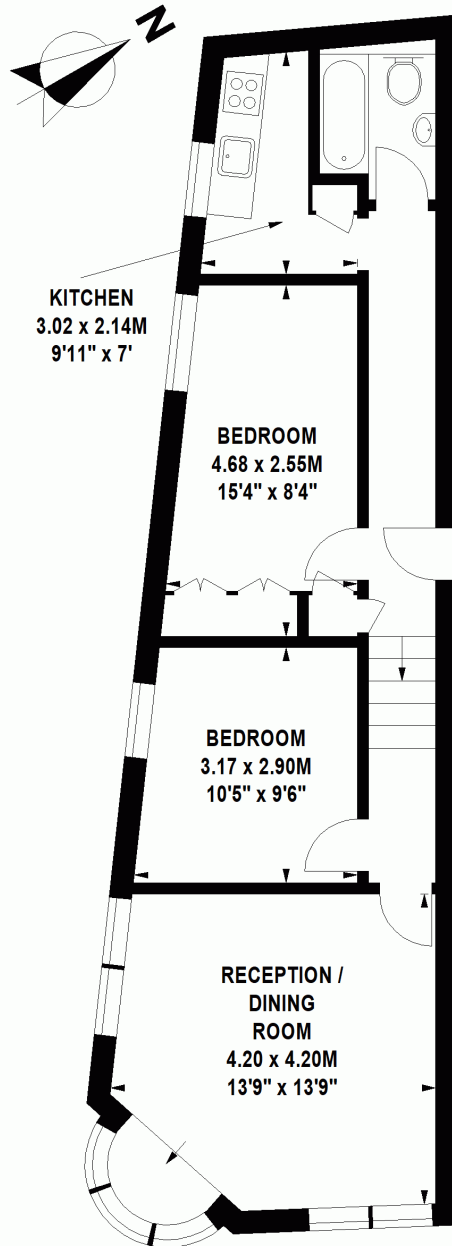


Chestertons Putney Sales

153 Upper Richmond Road
 London
 SW15 2TX
 putney@chestertons.co.uk
 020 8246 5959
 chestertons.co.uk

Putney High Street, SW15

Approximate Gross Internal Area 57 sq m / 614 sq ft



Second Floor

Floor Plan produced for Chestertons by Mays Floorplans © . Tel 020 3397 4594

Illustration for identification purposes only. Not to scale.

Orientation, measurements, and other details are approximate and for guidance only, purchasers should verify details independently.

Where a room has a sloping ceiling the dotted line marks 1.50M height, and all measurements shown are at floor level.

