



Village Estates

Independent Estate Agents & Mortgage Advisors



Westfield

*31 Netherwood Court
G68 9LN*

3 Bedroom End Terrace Villa

Hallway • Lounge • Dining Kitchen • W.C

3 Double Bedrooms • Bathroom

Gardens

Village Estates are delighted to introduce to the market this modern 3-bedroom end terrace villa situated in the much sought after Westfield area of Cumbernauld.

The property comprises of a welcoming hallway which leads to a fabulous size lounge. The hallway also leads to a stunning fitted kitchen which includes a generous range of base and wall-mounted units with integrated oven, hob, hood, microwave, fridge and freezer with ample space for dining. The lower level is complete with a spacious W.C.

The upper level accommodates 3 generous size double bedrooms with the master boasting a large walk-in storeroom. The accommodation is complete with a family bathroom comprising of a 4-piece white bath suite with shower over bath and separate walk-in shower enclosure.

The property also benefits from a system of gas central heating and is fully double glazed. Externally the property sits on an extensive plot with gardens to the front and rear. The rear garden is beautifully landscaped complete with artificial grass and decked area.

Viewing is essential to fully appreciate the accommodation on offer on this modern 3-bedroom end terrace villa which is in truly walk-in condition.

• Hallway		• Bedroom No. 1	4.48m x 3.00m
• Lounge	4.13m x 3.47m	• Bedroom No. 2	3.49m x 3.01m
• Kitchen/Dining	4.40m x 3.32m	• Bedroom No. 3	3.49m x 2.90m
• W.C	1.39m x 0.70m	• Bathroom	2.90m x 1.76m

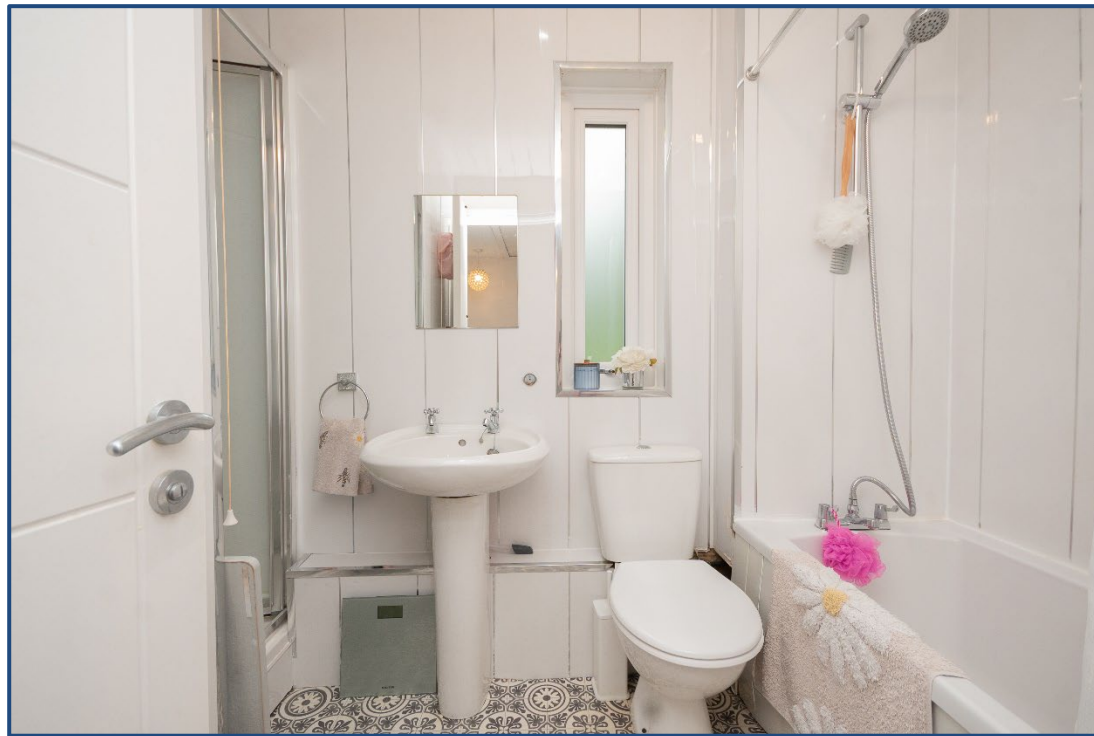
These particulars are believed to be correct and do not form part of any contract. Measurements have been taken using a sonic tape and may be subject to a small margin of error. Electrical/Gas fittings have not been tested and are assumed to be in working order. Photographs are included for information purposes only and it should not be assumed that any item is included in the purchase price of the property.

Ref. No. VEC26.3793











Selling Your Property !!

Contact us Now for a Free Valuation - We Offer a Full Sales & Marketing Package for a Very Competitive Fee

Mortgage

Village Estates Mortgages offers a full range of Mortgage and Re-Mortgage facilities

Home Reports, Surveys, Solicitors can also be arranged

Office Opening Hours

9am – 5.30pm Monday – Friday

10am – 1pm Saturday

Please contact our Branch Tel. Number during Saturday opening times for all enquiries

2 The Wynd The Village Cumbernauld

Tel: 01236 636101



www.ve-ea.co.uk

