



Benjamin Lane Wexham Slough SL3 6AB

for sale offers in the region of
£580,000



Property Description

A well maintained & spacious four bedroom townhouse is now offered for sale. Situated in a popular modern development within close proximity to Wexham Park Hospital.. Located within catchments of local Faith, Primary & Grammar Schools, easy access to regular bus routes and within two miles of Slough's Elizabeth line train station.

it benefits from 17ft lounge, 18ft kitchen/dining room, en-suite to master bedroom, modern bathroom, gas central heating, good size rear garden and garage.

Ground Floor

Door to

Entrance Hall

Radiator, understair storage cupboard, stairs to first floor, cloaks cupboard, doors to

Cloakroom

WC, hand wash basin, radiator, tiled floor

Lounge

Front aspect window, radiator, french doors to rear garden

Fitted Kitchen/Dining Room

Dual aspect window, range of wall & base units, one and a half bowl sink drainer with mixer tap & cupboard under, integrated four ring gas hob, electric oven under, cookerhood, integrated washing machine & dishwasher, space for fridge freezer, wall mounted gas boiler, radiator, tiled floor

First Floor

Landing

Stairs to second floor, radiator

Master Bedroom

Dual aspect windows, built-in wardrobes, radiator, door to



En-Suite Shower Room

front aspect window, fully tiled shower cubicle, wash hand basin with mixer tap, WC, radiator, tiled floor

Bedroom Two

Dual aspect windows, radiator

Second Floor

Landing

Access to loft

Bedroom Three

Skylight window, radiator, height restricted ceiling

Bedroom Four

Skylight window, built-in airing cupboard, radiator

Bathroom

Paneled bath with mixer tap & shower attachment, wash hand basin with mixer tap, WC, shaver point, radiator

Outside

Parking

One car driveway leading to

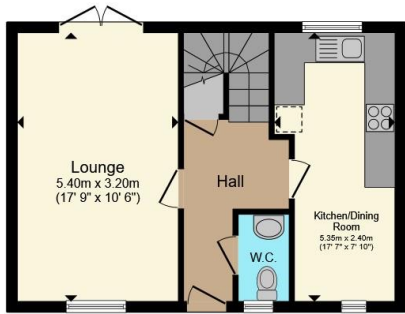
Garage

This is in a block nearby and is a single up & over door

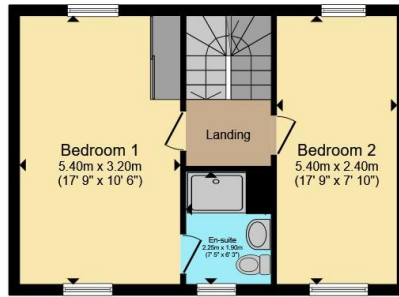
Rear Garden

Good size, mainly laid to lawn with patio area, gate for side access

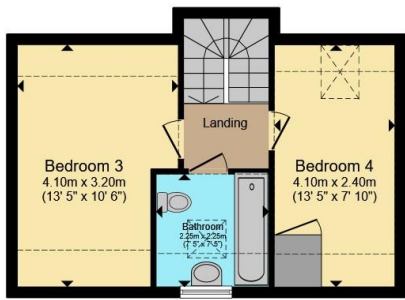




Ground Floor



First Floor



Second Floor

Total floor area 117.3 m² (1,263 sq.ft.) approx

This floor plan is for illustrative purposes only. It is not drawn to scale. Any measurements, floor areas (including any total floor area), openings and orientation are approximate. No details are guaranteed, they cannot be relied upon for any purpose and they do not form part of any agreement. No liability is taken for any error, omission or misstatement. A party must rely upon its own inspection(s). Powered by www.propertybox.io

Connells



To view this property please contact Connells on

T 01753 810 870
E slough@connells.co.uk

111 High Street
 SLOUGH SL1 1DH

EPC Rating: C Council Tax
 Band: E

Tenure: Freehold

check out more properties at connells.co.uk



1. MONEY LAUNDERING REGULATIONS Intending purchasers will be asked to produce identification documentation at a later stage and we would ask for your co-operation in order that there will be no delay in agreeing the sale. 2. These particulars do not constitute part or all of an offer or contract. 3. The measurements indicated are supplied for guidance only and as such must be considered incorrect. Potential buyers are advised to recheck measurements before committing to any expense. 4. We have not tested any apparatus, equipment, fixtures, fittings or services and it is in the buyers interest to check the working condition of any appliances.

Connells Residential is registered in England and Wales under company number 1489613, Registered Office is Cumbria House, 16-20 Hockliffe Street, Leighton Buzzard, Bedfordshire, LU7 1GN. VAT Registration Number is 500 2481 05.

See all our properties at www.connells.co.uk | www.rightmove.co.uk | www.zoopla.co.uk

Property Ref: SGH311369 - 0002