



Hampstead Gardens

London, NW11

£4,500 per month
(£1,038.46 per week)

A delightful semi detached 5 bedroom house over 3 floors with decked terrace and wood floors in this excellent road in Temple Fortune. The house is situated within walking distance to the shops and amenities of Temple Fortune and transport links of Golders Green (Northern Line). Accommodation comprises ground: large entrance hall, reception room with wood floors, open plan fully fitted kitchen with skylight and direct access to the terrace garden, study/office, shower room, utility room 1st floor: master bedroom, 2 double bedrooms, ultra modern bathroom 2nd floor: loft style double bedroom with plenty of storage, double bedroom, shower room, store room.

CHESTERTONS



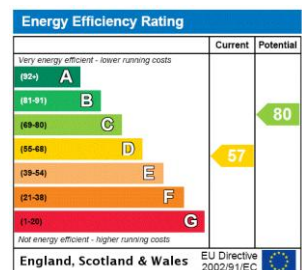
Hampstead Gardens

London, NW11

- A Delightful Semi Detached House Over 3 Floors
- 5 Bedrooms, 3 Bathrooms, Reception, Open Plan Fully Fitted Kitchen
- Decked Terrace, Wood Floors, Plenty of Storage, Study, Utility Room
- Walking Distance to the Amenities of Temple Fortune and Transport Links of Golders Green (Northern Line)



Deposit Required: £5,192.31
Local Authority: London Borough Of Barnet
Council Tax Band: C
EPC Rating: D
Unfurnished

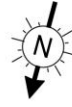


Chestertons Hampstead Lettings

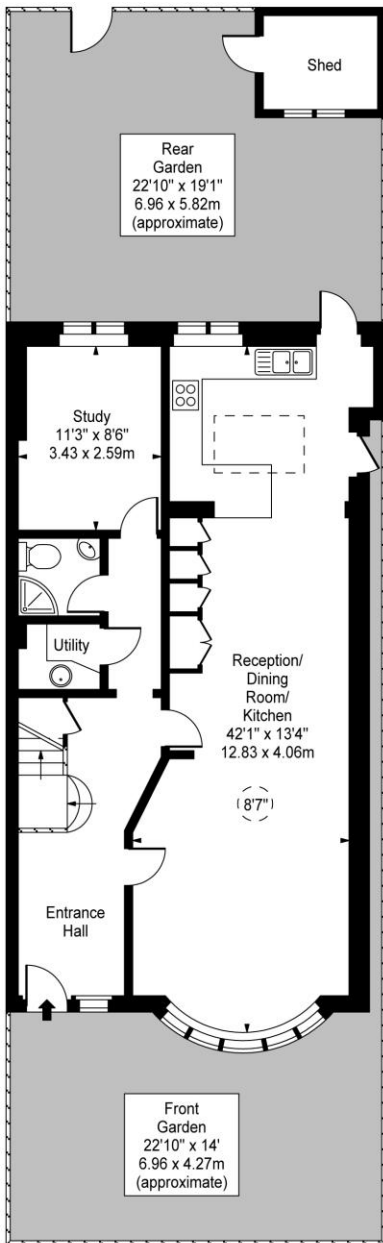
55-56 Hampstead High Street
 Hampstead
 London
 NW3 1QH
hampsteadlettingsusers@chestertons.co.uk
 02077941125
chestertons.co.uk

Additional tenant charges apply (fees apply to non-AST tenancies only)
 Tenancy Agreement Fee: £300
 References per Tenant/Guarantor: £60
 Inventory check (approx. £100 – £250 inc. VAT)
chestertons.co.uk/property-to-rent/applicable-fees

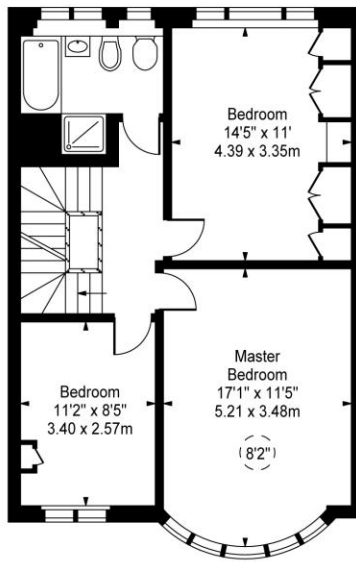
Hampstead Gardens, NW11



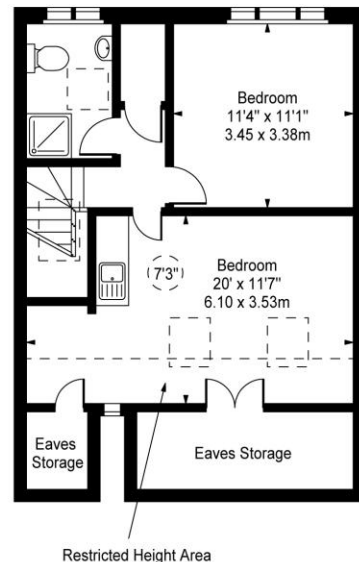
() - Ceiling Height



Ground Floor



First Floor



Second Floor

Approx Gross Internal Area **1850 Sq Ft - 171.86 Sq M**
 Approx. Floor Area Including Restricted Heights **1995 Sq Ft - 185.34 Sq M**
 (Including Eaves Storage)

For Illustration Purposes Only - Not To Scale
www.goldlens.co.uk
 Prepared for Chestertons
 Ref. No. 010890J

