

BRENNAN

BESPOKE

£269,950

Cranford Road

Burton Latimer, NN15 5TQ

Discover this stylish and versatile three-storey family home, ideally situated on Cranford Road in the heart of Burton Latimer. With private parking and a lovely garden, this property is perfect for families, first-time buyers, or anyone seeking comfortable modern living in a fantastic location. On the ground floor, you'll find a welcoming lounge/dining room, perfect for relaxing or entertaining, alongside a contemporary kitchen/breakfast room and a convenient downstairs WC. The first floor provides two generous double bedrooms and a stylish family bathroom, while the top floor boasts a large main bedroom with en-suite and excellent storage. Outside, the property benefits from private off-road parking and a lovely garden, ideal for enjoying the outdoors or hosting friends and family.

Set in a popular residential area, this home is close to local schools, parks, and amenities. With excellent transport links and a welcoming neighbourhood, it's the perfect place to put down roots.

3



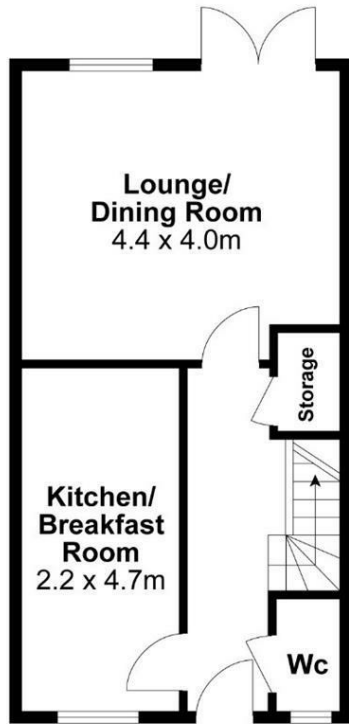
2



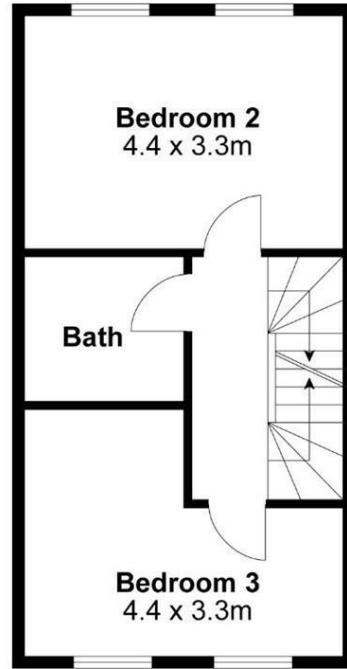
1



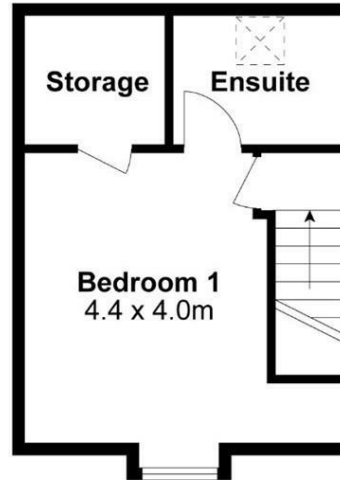




Ground Floor



First Floor



Second Floor

Internal Area Approx. : 101m²

BRENNAN
BESPOKE

For identification only not to scale

LOCAL AUTHORITY
North Northamptonshire

TENURE
Freehold

COUNCIL TAX BAND
C

VIEWINGS
By prior appointment only

Energy Efficiency Rating		
	Current	Potential
<i>Very energy efficient - lower running costs</i>		
(92 plus) A		
(81-91) B		
(69-80) C		
(55-68) D		
(39-54) E		
(21-38) F		
(1-20) G		
<i>Not energy efficient - higher running costs</i>		
England & Wales	EU Directive 2002/91/EC	

Agents Note: Whilst every care has been taken to prepare these particulars, they are for guidance purposes only. All measurements are approximate and are for general guidance purposes only and whilst every care has been taken to ensure their accuracy, they should not be relied upon and potential buyers/tenants are advised to recheck the measurements

BRENNAN
BESPOKE

OFFICE ADDRESS
BRENNAN BESPOKE
2 The Tithe Barn Glendon Lodge Farm
Glendon
Kettering
Northamptonshire
NN14 1QF

OFFICE DETAILS
01536 904400
info@brennanbespoke.co.uk
<https://www.brennanbespoke.co.uk>