



Guide Price
£330,000

Freehold

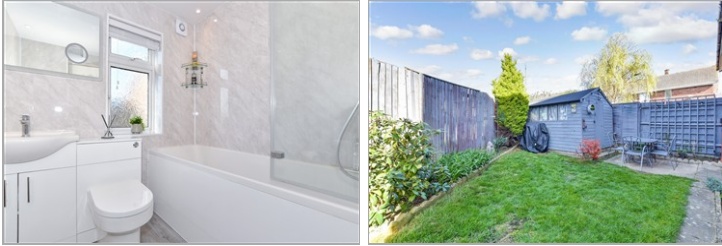
3x  1x  1x 

**Columbine Close, East
Malling, Kent, ME19**

OVER 60?

Secure this property
for up to **59% less!**

Wards
Helping you move forwards



Main features

- Stunning home - ready to move into
- Useful ground floor cloakroom
- Quiet cul-de-sac location
- Close to good schools & shops for your convenience
- Excellent transport links by road & rail close by

Accommodation

GROUND FLOOR

Entrance Hall

Cloakroom

Lounge: 17'4 x 10'10 (5.29m x 3.30m)

Kitchen/Diner: 13'2 x 9'9 (4.02m x 2.97m)

Store: 8'7 x 4'10 (2.62m x 1.47m)

FIRST FLOOR

Landing

Bedroom 1: 12'3 x 10'1 (3.74m x 3.08m)

Bedroom 2: 11'2 x 11'0 (3.41m x 3.36m)

Bedroom 3: 7'10 x 7'8 (2.39m x 2.34m)

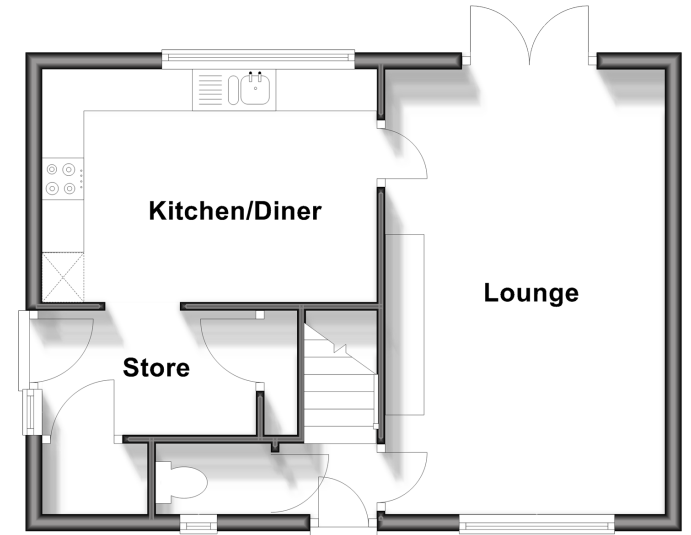
Bathroom

OUTSIDE

Front & Rear Gardens

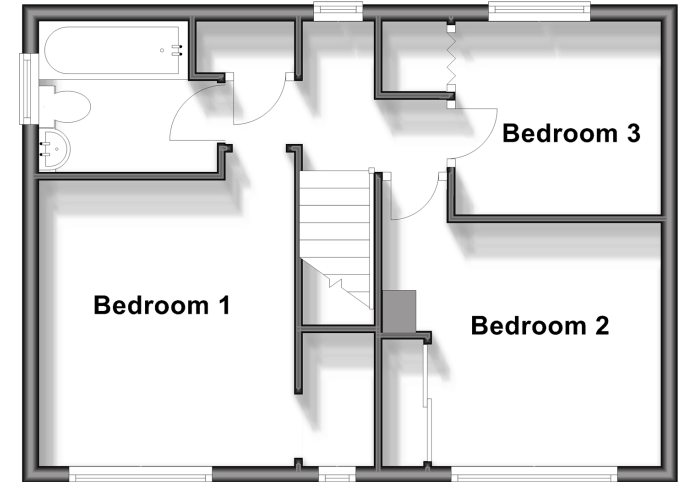
Ground Floor

Approx. 39.4 sq. metres (424.0 sq. feet)



First Floor

Approx. 39.2 sq. metres (421.8 sq. feet)



Call Larkfield - 01732 847877 ■ wardsof Kent.co.uk

- Legal advice should be taken to verify fixtures/fittings, planning, alterations and/or lease details
- Appliances & services are untested, dimensions are approximate and floor plans are not to scale
- Through a Homewise Home For Life Plan people aged 60+ can secure this property for up to 59% less, by purchasing a Lifetime Lease



12935433/20260207/RT/JT