



**11 Fidler Place, Bushey – WD23 4UF**  
**£399,500**





A modern and spacious two double bedroom terraced house, ideally situated in a convenient residential location within a cul-de-sac and offered for sale with no upper chain. The property has been extended to the rear to provide a conservatory and is well arranged with a welcoming entrance hall and a useful cloakroom. The bright 17ft living room and the 14ft kitchen are separate rooms, both open plan to the conservatory, creating a generous and versatile living space ideal for both relaxing and entertaining. The conservatory features double glazed doors leading out onto the rear garden, enhancing the connection between indoor and outdoor living. Both bedrooms are generous doubles and benefit from fitted wardrobes, complemented by a well appointed four piece bathroom. Further features include gas warm air heating and double glazing throughout for comfort and efficiency. Outside, the property enjoys a rear garden, perfect for outdoor use and entertaining.





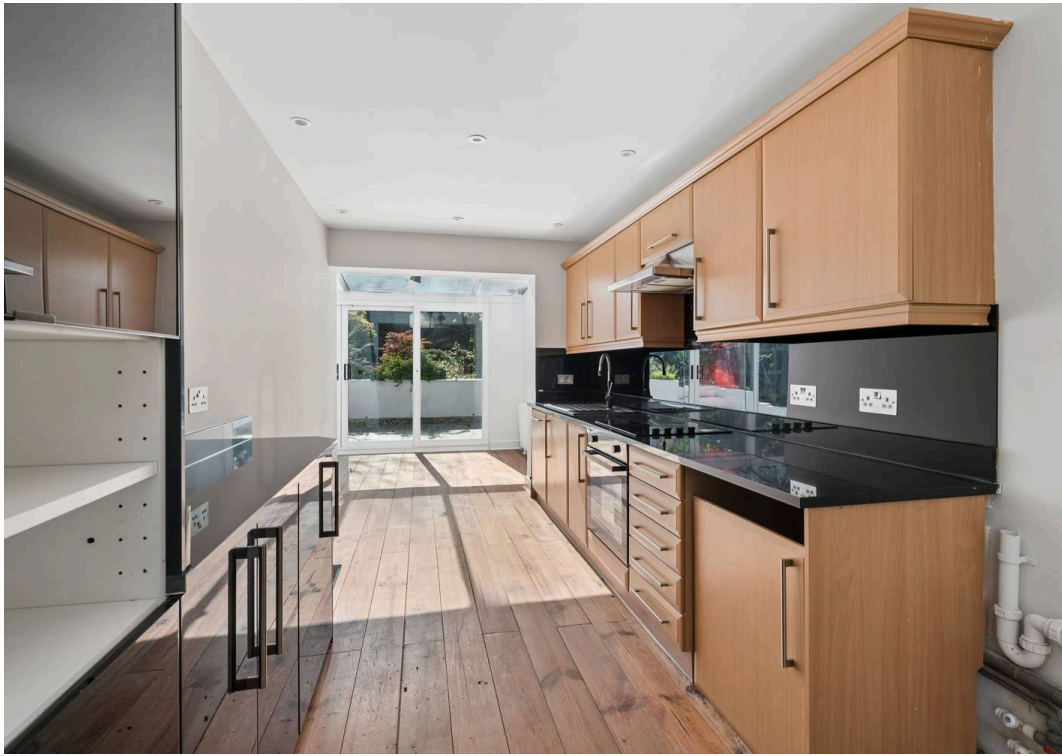
- 2 Bedroom Terrace House
- Convenient Cul De Sac Location
- 17ft Living Room
- 14ft Kitchen
- Downstairs WC
- Bedrooms With Wardrobes
- 4 Piece Bathroom
- No Upper Chain

Council Tax band: D

Tenure: Freehold

EPC Energy Efficiency Rating: C

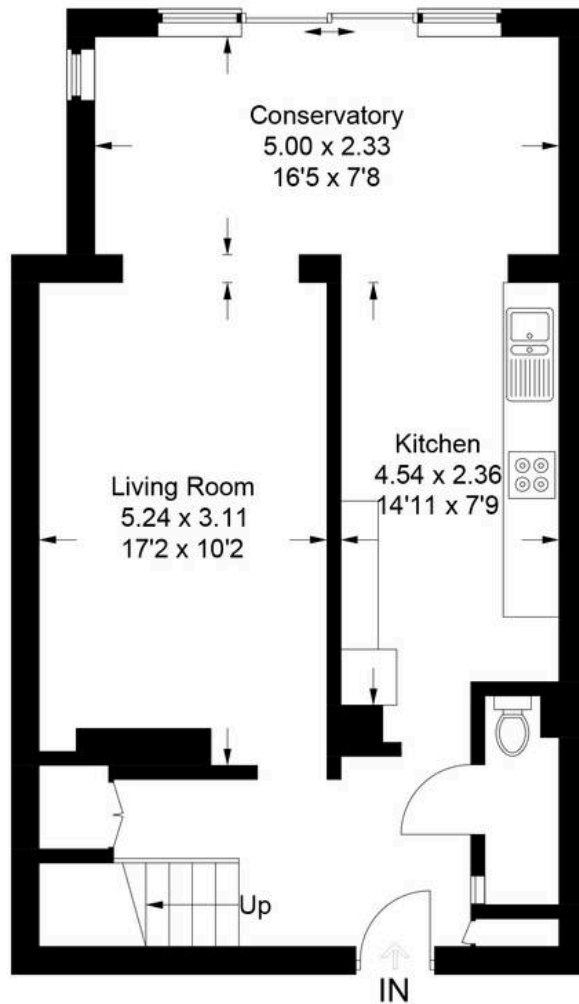




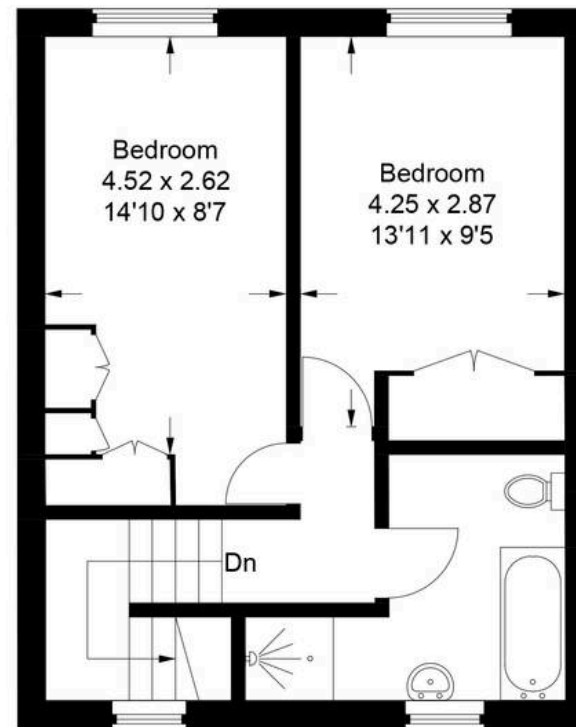


# Fidler Place

Approximate Gross Internal Area  
Ground Floor = 53.0 sq m / 567 sq ft  
First Floor = 41.0 sq m / 443 sq ft  
Total = 94.0 sq m / 1,010 sq ft



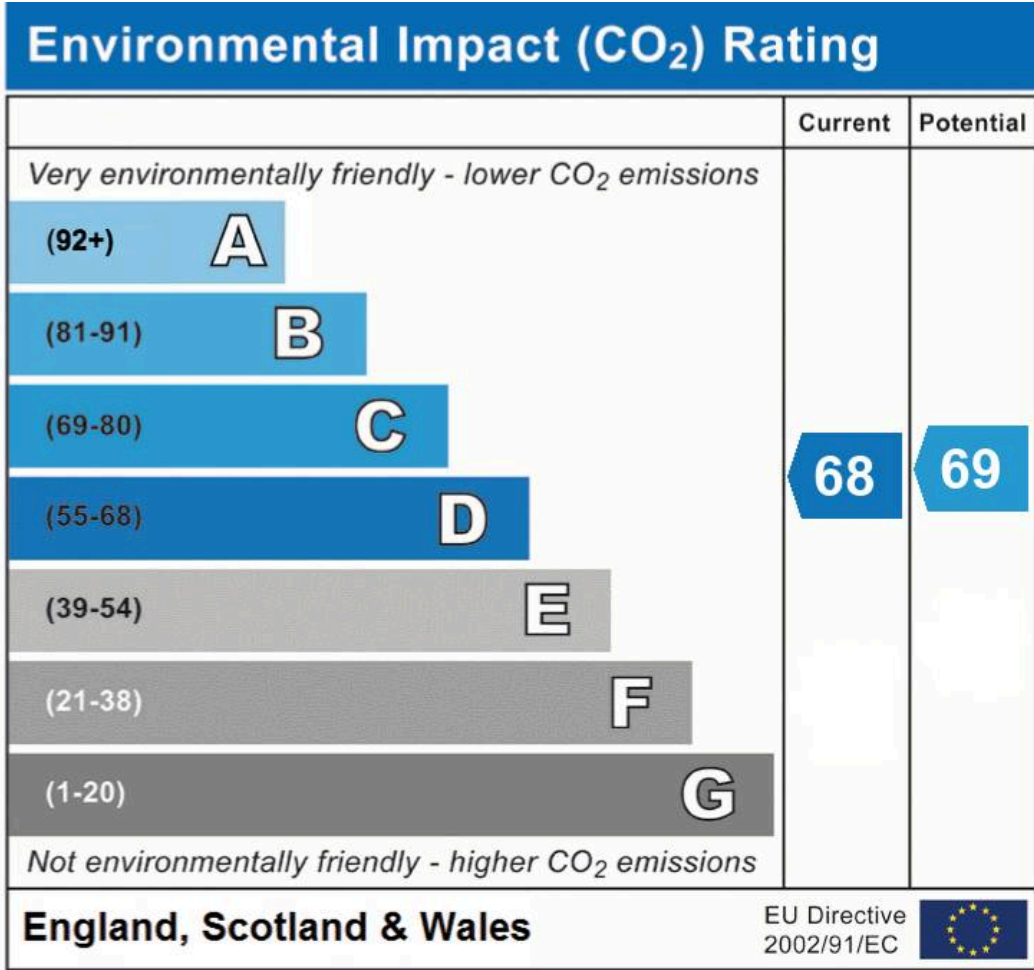
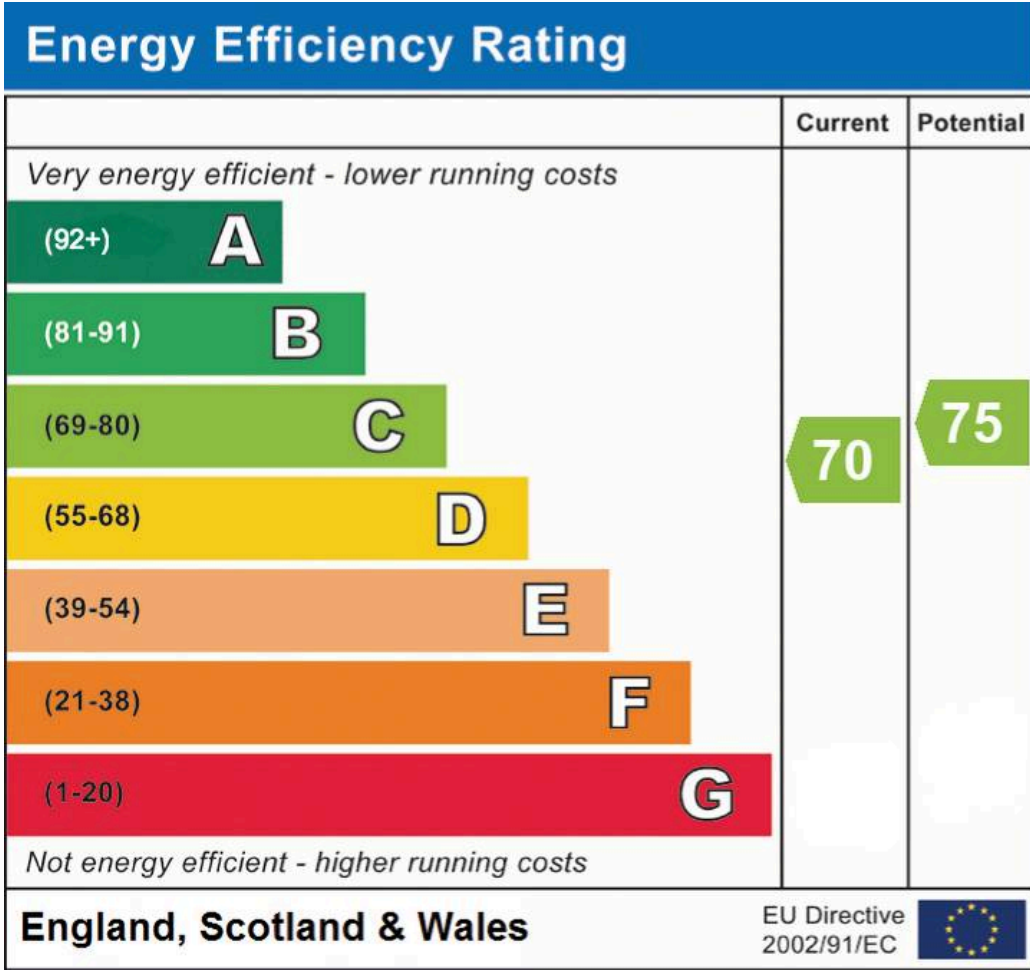
**Ground Floor**



**First Floor**

This plan is for layout guidance only. Not drawn to scale unless stated. Windows and door openings are approximate. Whilst every care is taken in the preparation of this plan, please check all dimensions, shapes and compass bearings before making any decisions reliant upon them.

© CJ Property Marketing Ltd Produced for Churchills



# Churchills – Bushey

Churchills Estate Agents, 72 High Street – WD23 3HE

020 8950 0033

[churchillsbushey.co.uk](http://churchillsbushey.co.uk)

We have prepared these particulars as a general guide of the property and they are not intended to constitute part of an offer or contract. We have not carried out a detailed survey of the property and we have not tested any apparatus, fixtures, fittings, or services. All measurements and floorplans are approximate, and photographs are for guidance only. These should not be relied upon for the purchase of carpets or any other fixtures or fittings. Lease details, service charges and ground rent (where applicable) have been provided by the client and should be checked and confirmed by your solicitor prior to exchange of contracts.