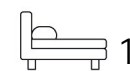


Living  
made  
better

Defoe House  
London City Island, E14 0TX



B

Asking Price £525,000

# Defoe House, London City Island, E14 OTX

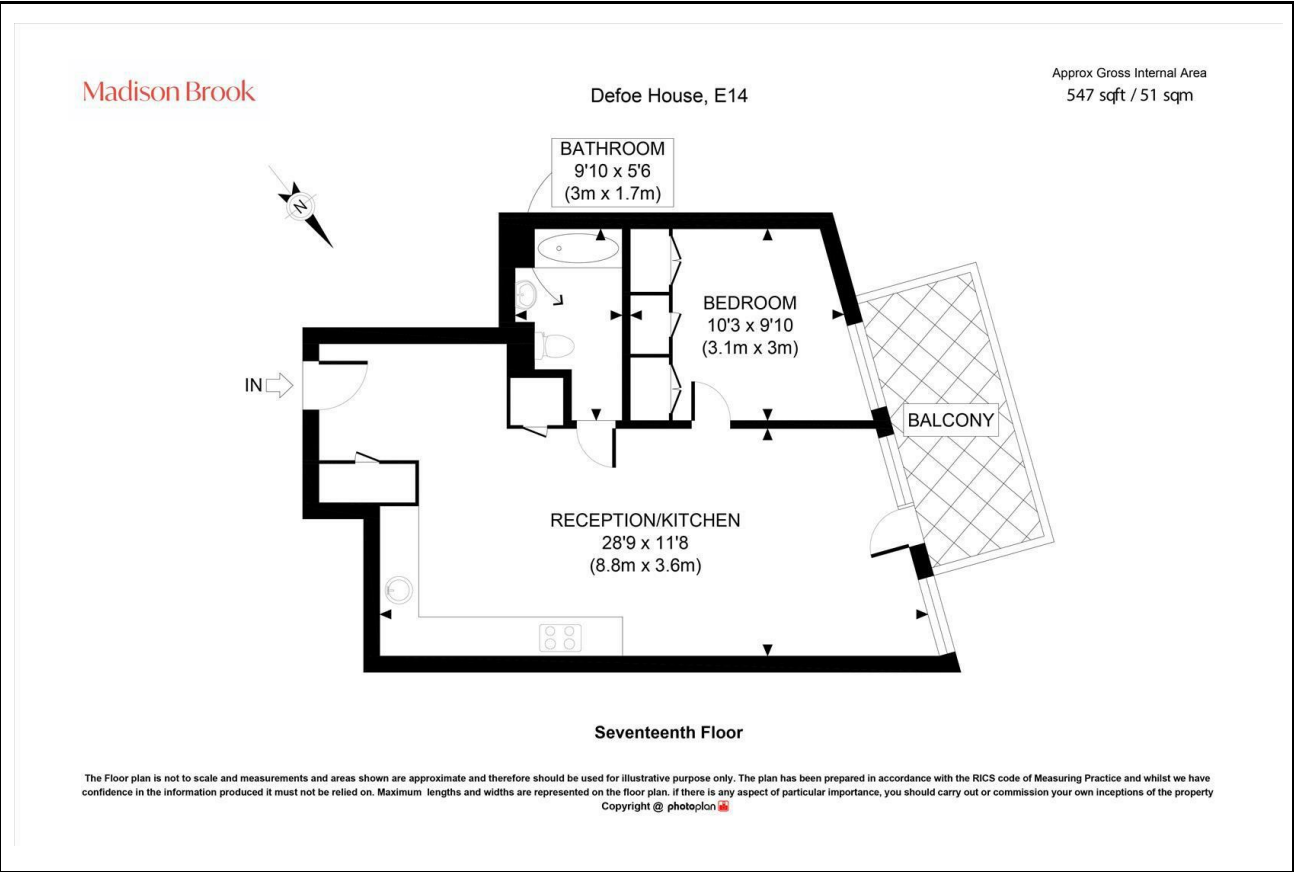
Madison Brook

## Property Summary

Set on the 17th floor of Defoe House at London City Island, this one-bedroom apartment offers approx. 547 sq. ft. of modern living space with a private balcony and far-reaching views towards the River Lea and Thames. The property features an open-plan reception/kitchen with integrated appliances, a double bedroom with built-in storage, and a contemporary bathroom. Residents benefit from 24-hour concierge plus excellent on-site facilities including a gym, indoor/outdoor pools, and cafés/bars, with Canning Town Station close by.

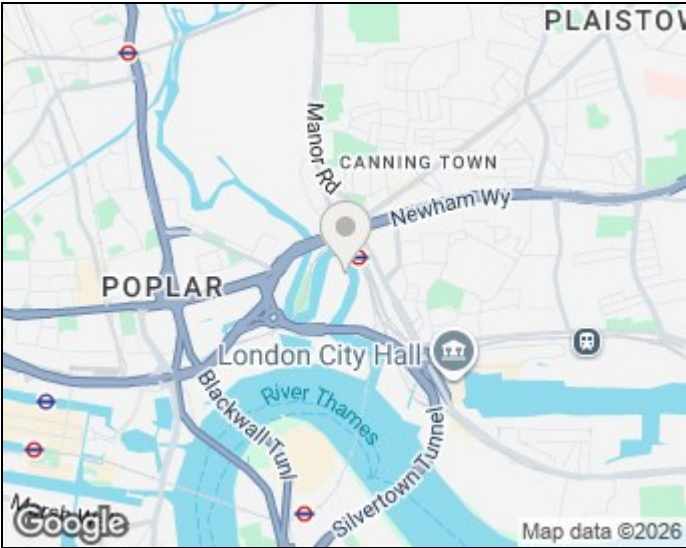
Service charge: £4,350.40 pa | Ground rent: £500 pa | Lease: 994 years remaining

## Floorplan

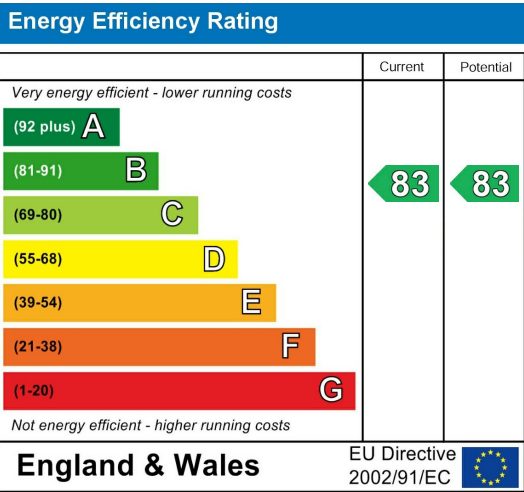


These particulars, whilst believed to be accurate are set out as a general outline only for guidance and do not constitute any part of an offer or contract. Intending purchasers should not rely on them as statements of representation of fact, but must satisfy themselves by inspection or otherwise as to their accuracy. No person in this firms employment has the authority to make or give any representation or warranty in respect of the property.

## Area Map



## Energy Efficiency Graph



Unit B 20 Western Gateway, Royal Victoria  
Dock, London, E16 1BS  
Tel: 020 3946 6000 Email:  
docklands@madisonbrook.com  
<https://madisonbrook.com/>