



Wheelwright House, Palgrave Road, BEDFORD, MK42 9EX

Welcome to

Wheelwright House Palgrave Road, BEDFORD

A bright and well-presented two-bedroom penthouse in Wheelwright House, offering modern living, lift access, and a private balcony with peaceful river views.

Hallway

Hard Flooring, Electric Heater, Intercom

Living/Dining Room

23' 9" x 10' 1" (7.24m x 3.07m)

Hard Flooring, Electric Heater, 2 Semi Flush Ceiling Lights (with 3 lights on each), TV & Internet Points, 3 Windows to Rear Aspect

Kitchen

14' 1" x 9' 11" (4.29m x 3.02m)

Hard Flooring, Integrated Fridge/Freezer, Dishwasher, Washing Machine, Electric Cooker and Hob (with 4 rings), Adjustable Spotlight Ceiling Mount (with 4 spotlights), 2 windows to Rear Aspect, Sliding Door to the Balcony (Over-looking the River)

Bedroom One

12' 9" x 10' 3" (3.89m x 3.12m)

Hard Flooring, Electric Heater, Integrated Built-in Wardrobe, 2 Windows to Front Aspect

En-Suite

6' 9" x 4' 4" (2.06m x 1.32m)

Laminate Flooring, Toilet, Wash Hand Basin, Heated Towel Rail, Shower Cubicle, Extractor Fan, 2 Spotlights

Bedroom Two

9' 3" x 8' (2.82m x 2.44m)

Carpeted, Electric Heater, Built-in Wardrobe, 2 Windows to the Front Aspect

Bathroom

Laminate Flooring, Toilet, Wash Hand Basin, Heated Towel Rail, Bath with Overhead Shower, Extractor Fan, 4 Spotlights

Loft Space

Loft Latch in the Entrance Hallway, Ladder, Good Space, Insulated,

Parking

Allocated Underground Parking Space (Part of the Title)

Agent Note

The vendors have upgraded all the electric heaters and changed the balcony door and windows to double glazing.





View this property online williamhbrown.co.uk/Property/BFD105599



Welcome to

Wheelwright House, Palgrave Road, BEDFORD

- Two Double Bedrooms
- Penthouse Residence with Balcony Overlooking the River
- Spacious Living/Dining Room Area
- Allocated Underground Parking Space
- Intercom System

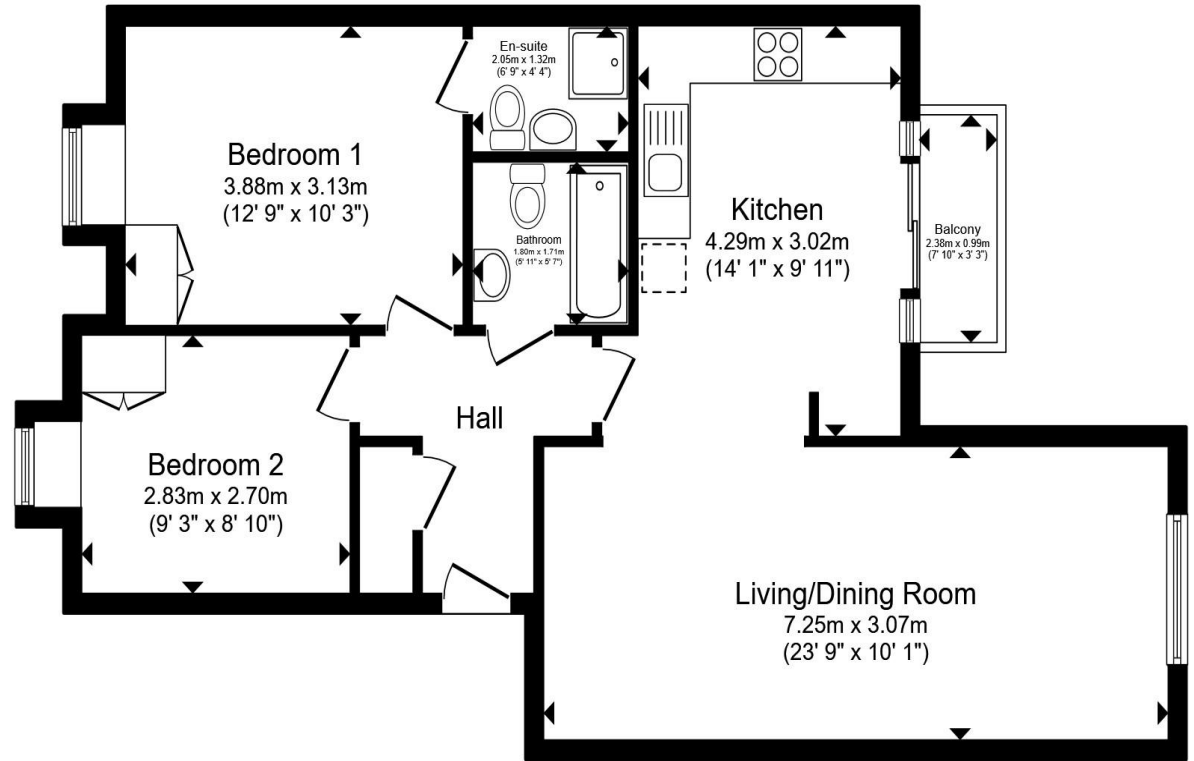
Tenure: Leasehold EPC Rating: D

Council Tax Band: C Service Charge: 2539.34

Ground Rent: 383.88

This is a Leasehold property with details as follows; Term of Lease 999 years from 31 May 2006. Should you require further information please contact the branch. Please Note additional fees could be incurred for items such as Leasehold packs.

£265,000



Total floor area 70.8 m² (762 sq.ft.) approx

This floor plan is for illustrative purposes only. It is not drawn to scale. Any measurements, floor areas (including any total floor area), openings and orientation are approximate. No details are guaranteed, they cannot be relied upon for any purpose and they do not form part of any agreement. No liability is taken for any error, omission or misstatement. A party must rely upon its own inspection(s). Powered by www.propertybox.io



View this property online williamhbrown.co.uk/Property/BFD105599



Property Ref:
BFD105599 - 0004

1. MONEY LAUNDERING REGULATIONS Intending purchasers will be asked to produce identification documentation at a later stage and we would ask for your co-operation in order that there is no delay in agreeing the sale. 2. These particulars do not constitute part or all an offer or contract. 3. The measurements indicated are supplied for guidance only and as such must be considered incorrect. Potential buyers are advised to recheck measurements before committing to any expense. 4. We have not tested any apparatus, equipment, fixtures or services and it is in the buyers' interest to check the working condition of any appliances. 5. Where an EPC, or a Home Report (Scotland only) is held for this property, it is available for inspection at the branch by appointment. If you require a printed version of a Home Report, you will need to pay a reasonable production charge reflecting printing and other costs. 6. We cannot offer an opinion either written or verbal on the content of these reports and this must be obtained from your legal representative. 7. Whilst we take care in preparing these reports, a buyer should ensure that his/her legal representative confirms as soon as possible all matters relating to title including the extent and boundaries of the property and other important matters before exchange of contracts.


william h brown



01234 268367



bedford@williamhbrown.co.uk



40 Allhallows, BEDFORD, Bedfordshire, MK40
1LN



williamhbrown.co.uk