



Price
£500,000

Freehold

2x  1x  1x 

**The Mall, Faversham,
Kent, ME13**

OVER 60?

Secure this property
for up to **59% less!**

Wards
Helping you move forwards

Accommodation

GROUND FLOOR

Entrance Lobby

Cloakroom

Lounge: 14'0 x 11'0 (4.27m x 3.36m)

Kitchen/Diner: 23'0 x 10'0 (7.02m x 3.05m)

BASEMENT

Room 1: 10'0 x 10'0 (3.05m x 3.05m)

Room 2: 10'0 x 8'0 (3.05m x 2.44m)

FIRST FLOOR

Landing

Bedroom 1: 11'0 x 10'11 (3.36m x 3.33m)

Bedroom 2: 10'0 x 10'0 (3.05m x 3.05m)

Shower room

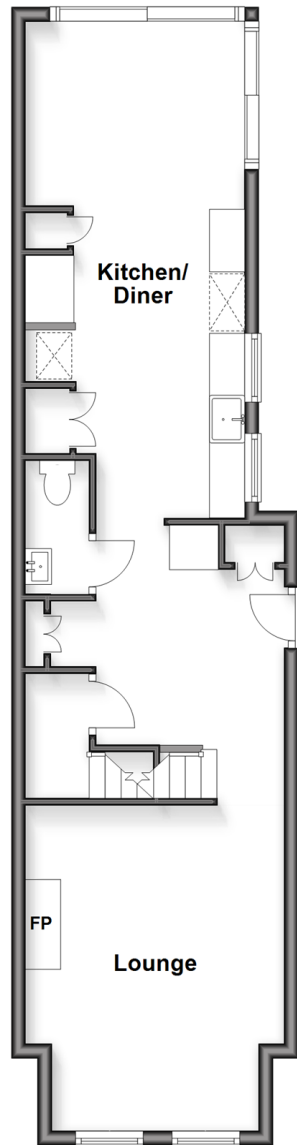
OUTSIDE

Front Garden

Rear Garden

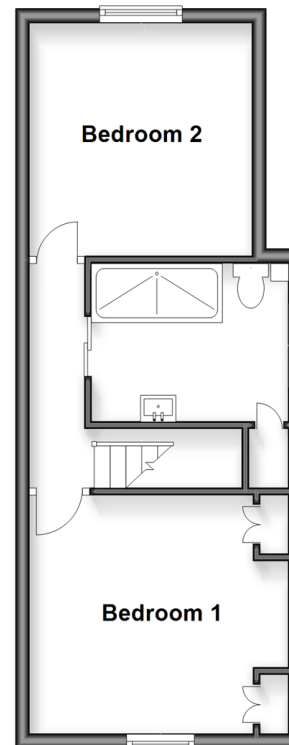
Ground Floor

Approx. 51.8 sq. metres (557.8 sq. feet)



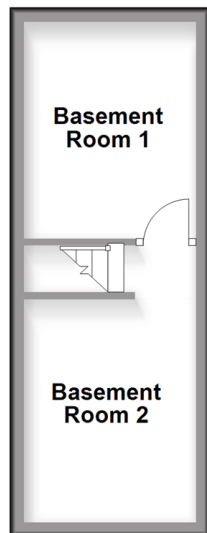
First Floor

Approx. 34.6 sq. metres (372.2 sq. feet)



Basement (restricted height)

Approx. 16.9 sq. metres (182.3 sq. feet)





Main features

- Fantastic property in a highly sought after location
- Within walking distance to town centre and mainline station
- Perfect for professionals commuting to London
- Useful basement providing additional storage space
- Beautiful secluded walled garden with side access to front



Nearest Schools

Primary Schools: Ethelbert Road Infant School 0.4 miles, St Mary of Charity CE (Aided) Primary 0.8 miles

Secondary Schools: The Abbey School 0.5 miles, Queen Elizabeth's Grammar School 1.0 miles



Transport Information

Train Stations: Faversham 0.4 miles, Selling 3.8 miles, Teynham 4.6 miles



Address

The Mall, Faversham, Kent, ME13



Directions

For directions to this property please contact us.



Wards
Helping you move forwards

Call Faversham Branch 01795 535517 ■ wardsof Kent.co.uk



■ Through a Homewise Home For Life Plan people aged 60+ can secure this property for up to 59% less, by purchasing a Lifetime Lease



10832482/20260320/JB/HR