



CLIVEPEARCE
Now you're moving

1 Bedrooms

Bungalow

Asking Price

£175,000

Located in

Truro



www.clivepearceproperty.com



Penhallow Close

Truro | | TR4 8DD



In a highly sought after village location, this one bedroom bungalow is presented to give a stylish and contemporary feel. Enclosed garden.

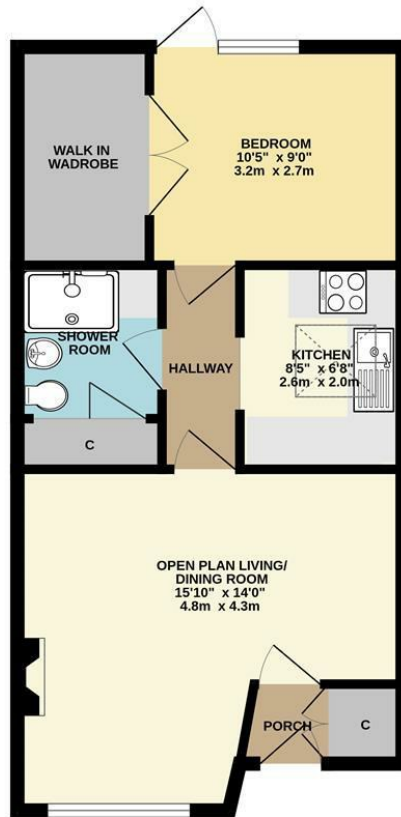
Penhallow Close

£175,000 Freehold



- Beautifully presented village bungalow
- Open plan living room
- Utility shower room/Wc
- Front sun terrace & Private rear garden
- No onward chain
- One double bedroom with huge walk in wardrobe
- Fitted kitchen
- Double glazing & Underfloor heating
- Off street parking

GROUND FLOOR
480 sq.ft. (44.6 sq.m.) approx.



TOTAL FLOOR AREA: 480 sq.ft. (44.6 sq.m.) approx.

Whilst every attempt has been made to ensure the accuracy of the floorplan contained here, measurements of doors, windows, rooms and any other items are approximate and no responsibility is taken for any error, omission or mis-statement. This plan is for illustrative purposes only and should be used as such by any prospective purchaser. The services, systems and appliances shown have not been tested and no guarantee as to their operability or efficiency can be given.
Made with Metropix. ©2025

Council Tax Band A Local Authority

Agents Note: Whilst every care has been taken to prepare these particulars, they are for guidance purposes only. All measurements are approximate and are for general guidance purposes only and whilst every care has been taken to ensure their accuracy, they should not be relied upon and potential buyers/tenants are advised to recheck the measurements.

Energy Efficiency Rating		Current	Potential
Very energy efficient - lower running costs			
(92 plus) A			
(81-91) B			
(69-80) C			
(55-68) D		68	80
(39-54) E			
(21-38) F			
(1-20) G			
Not energy efficient - higher running costs			
England & Wales		EU Directive 2002/91/EC	

31 Lemon Street
Truro
Cornwall
TR1 2LS



CLIVEPEARCE
Now you're moving

hello@clivepearceproperty.com

01872 272622

www.clivepearceproperty.com