

Corsican Square, E3

£400,000

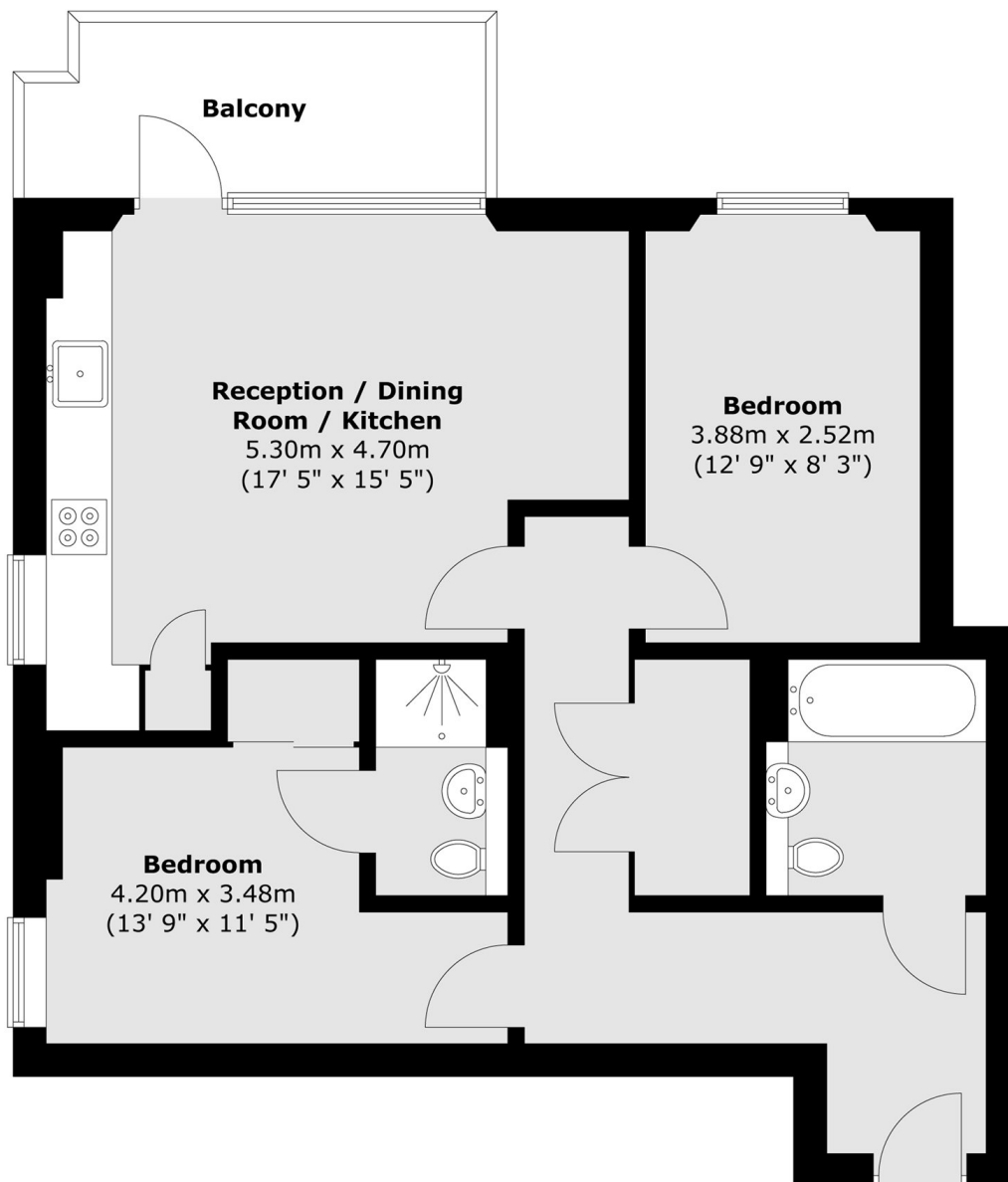
We are pleased to present this two bedroom, two bathroom apartment, situated on the third floor of a highly sought-after modern development in Lime Quarter, Corsican Square. The property benefits from a private balcony and is located just moments from Devons Road DLR station.

Kitson House is moments from Devons Road DLR Station which provides good links to Canary Wharf and other parts of the City. Bromley-By-Bow station nearby offers additional transit options with the District and Hammersmith & City Lines. Plus, the proximity to bus stops connecting to Canning Town, Mile End, Lewisham, and Stratford.

Features

- 682 Square Feet
- Private Balcony
- Day Porter
- Residents Lounge
- Bike Storage
- Two Double Bedroom

Corsican Square, London, E3



Total area (approx.) : 63.3 sq. m (681 sq. ft)
Total balcony area (approx.) : 6.4 sq. m (69 sq. ft)