



Phillimore Gardens, NW10

£980 Per week

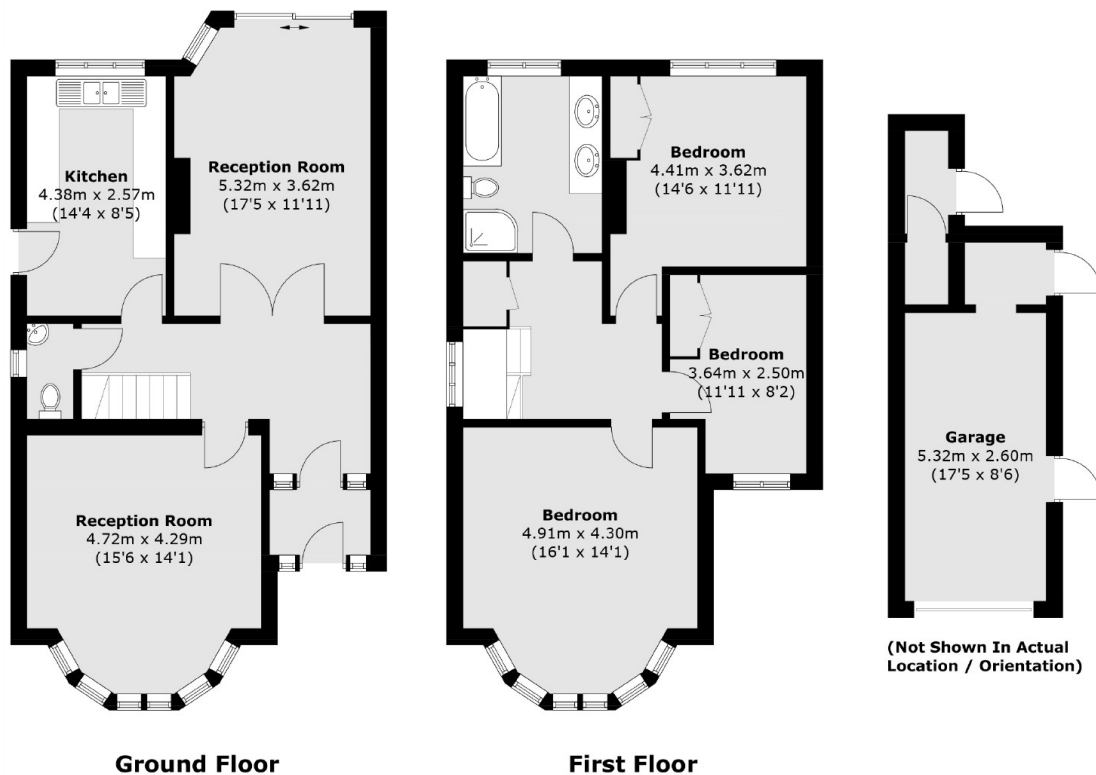
A spacious three double bedroom house with driveway parking. The property has a large garden, two receptions downstairs WC and an eat-in kitchen. Upstairs is a large front facing principal bedroom, two further good size rooms and the family bathroom

Phillimore Gardens is a sought-after residential area of Kensal Rise, with access to the shops, cafes, bars and restaurants on Chamberlyane Road and Salusbury Road.

Features

- Three Bedrooms
- Spacious
- Driveway Parking
- Two Receptions
- Eat-in Kitchen
- Great Location

Phillimore Gardens, London, NW10



Total area (approx.): 128.5 sq. m (1,383.2 sq. ft)
Garage area (approx.): 19.2 sq. m (206.7 sq. ft)