

**LONDON
VICTORIA
GROUPS** 



Purcell Apartments, 57 Chandlers Avenue

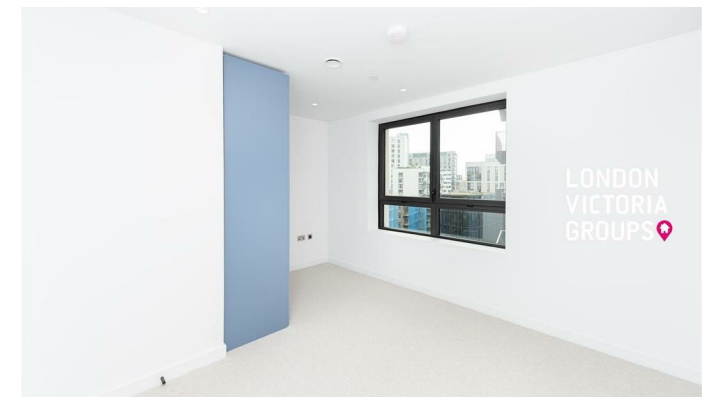
, London SE10 0FH

- One-bedroom, one-bathroom
- 24-hour concierge service
- North Greenwich Station – within walking distance
- Close to riverside walks, cafés, restaurants
- Open-plan living and dining area
- Landscaped communal gardens
- Excellent bus connections to Greenwich, Canary Wharf, and Central London
- EPC-B

£2,300 Per Month



Local Authority
Council Tax Band
EPC Rating



London Office Office
Spaces Victoria, 25 Wilton Road, Pimlico,
London, SW1V 1LW

Contact
020 3084 3094
XL@londonvictoriagroups.co.uk
www.londonvictoriagroups.co.uk

Agents Note: Whilst every care has been taken to prepare these particulars, they are for guidance purposes only. All measurements are approximate and for general guidance purposes only and whilst every care has been taken to ensure accuracy, they should not be relied upon and potential buyers/tenants are advised to recheck the measurements.