



Gledhow Gardens, SW5

£750 Per week

Newly refurbished two bedroom apartment with its own private garden in an attractive period building in South Kensington with spacious rooms and access to communal gardens.

Gledhow Gardens is located between Old Brompton Road and Wetherby Gardens. There is a parade of shops on Old Brompton Road, starting at the end of Gledhow Gardens. Gloucester Road underground station is within a mile.

Features

- Two Bedrooms
- Two Bathrooms
- Wood Floors
- Private Garden
- Communal Gardens
- Excellent Location

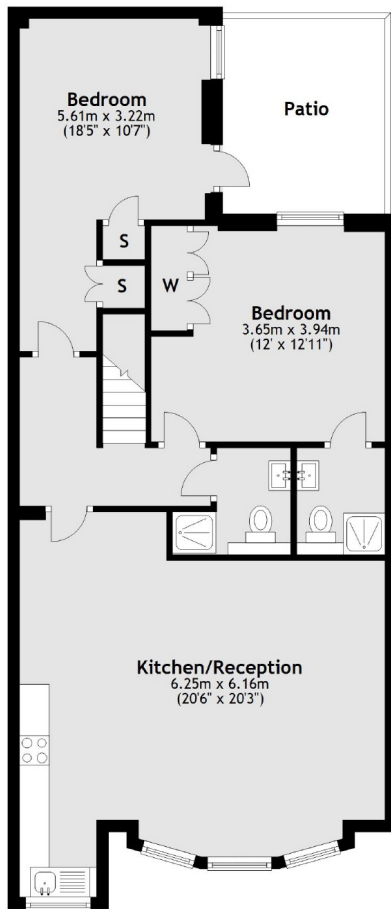


Gledhow Gardens, SW5

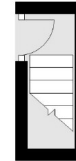


Gledhow Gardens, London, SW5

Lower Ground Floor



Ground Floor



Total area: approx. 78.3 sq. metres (843.3 sq. feet)