



6 Wainman Square

Wyke, Bradford, BD12 8HP

£600 PCM





Newly decorated and carpeted, this cosy 1-bedroom back-to-back terraced property will be of special interest to a single person or couple. Located within a highly regarded residential location convenient for local amenities and access to commuter links for Bradford, Halifax and the M62 motorway network.

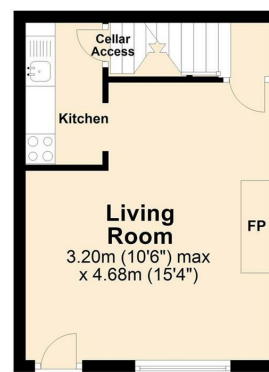
Accommodation

Recently refurbished this property is ideal for a single occupant. Having a small yard to the front, the property incorporates a lounge with electric fireplace, newly fitted kitchen with oven & hob, a useful storage cellar and to the first floor a 3 piece bathroom suite with electric shower, and a good sized double bedroom.

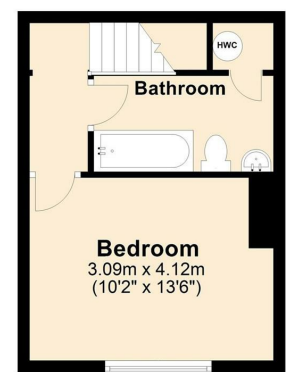
Location

Situated close to the centre of Wyke village, Wainman Square is an excellent hub for anyone needing access to the amenities on offer including a range of cafes, shops and the Post Office. The main transport route of Huddersfield Road provides access to Brighouse and beyond, while Halifax and the motorway can be reached via the A58.

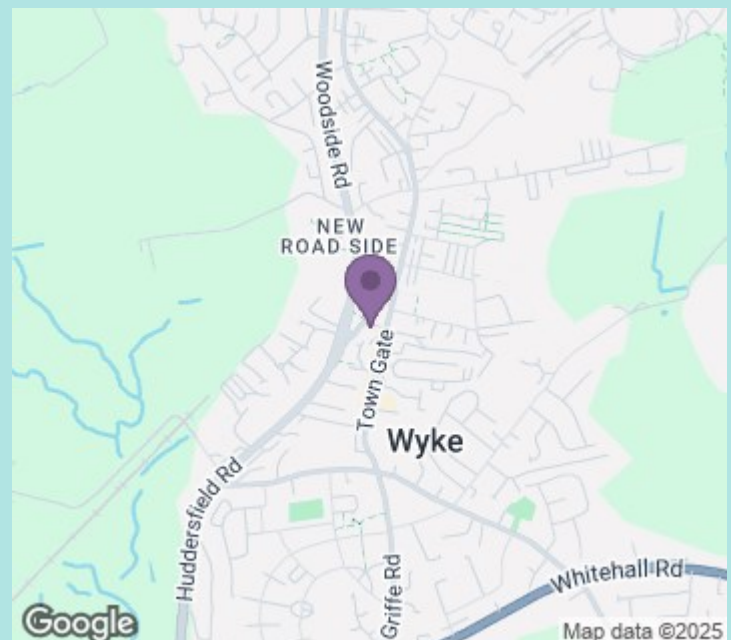
Ground Floor



First Floor



Council tax band: A
EPC rating: E
Deposit: £692



ws-residential.co.uk

01484 711200



These particulars, whilst believed to be accurate are set out as a general outline only for guidance and do not constitute any part of an offer or contract. Intending purchasers should not rely on them as statements of representation of fact, but must satisfy themselves by inspection or otherwise as to their accuracy. No person in this firm's employment has the authority to make or give any representation or warranty in respect of the property.