

Grosvenor Road, SW1V

£1,200,000

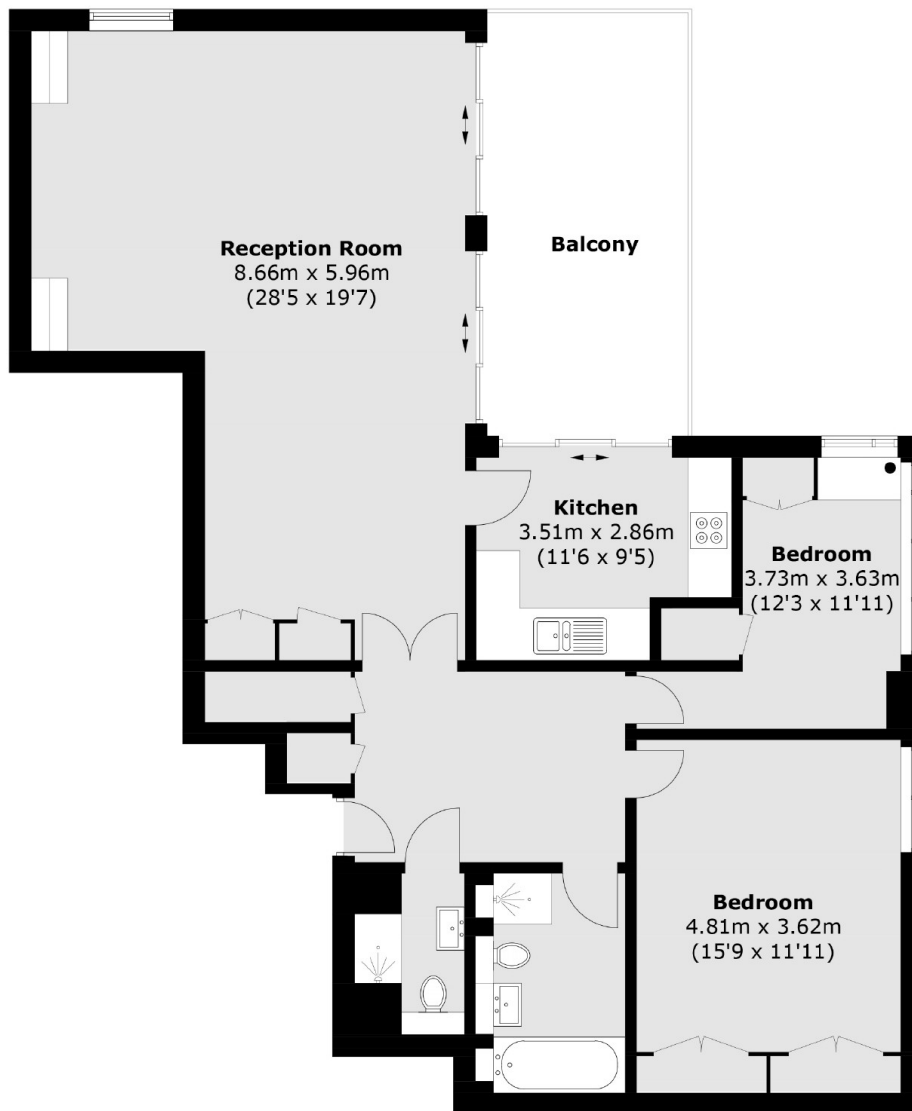
This well-appointed two-bedroom apartment offers scenic views across the Thames, set in a desirable riverside development. It includes a large living area, separate kitchen, two double bedrooms and two bathrooms.

Crown Reach is positioned alongside The Thames, there are good transport links with Pimlico tube and Vauxhall mainline and tube nearby and Pimlico offers a variety of shops and restaurants.

Features

- River Thames View
- 24 Hour Concierge
- Residents Parking
- Private Terrace
- 55 Year Lease
- Chain Free

Grosvenor Road, London, SW1V



Second Floor

Total area (approx.): 105.1 sq. m (1,131.2 sq. ft)
Balcony area : 16.1 sq. m (173.3 sq. ft)