



14 TEMPLAR COURT
SOUTHAMPTON
Hampshire, SO14 6QZ

£1,000 PCM

[goadsby.com](https://www.goadsby.com)

TWO BEDROOM FLAT CLOSE TO THE CITY CENTRE

- Two bedroom flat
- Inner Avenue
- Allocated Parking
- Close to city centre
- EPC Rating - Band C

Energy Efficiency Rating		Current	Potential
Very energy efficient - lower running costs			
A	(91-100)		
B	(81-90)		
C	(69-80)	75	77
D	(55-68)		
E	(39-54)		
F	(29-38)		
G	(1-28)		
Not energy efficient - higher running costs			
England, Scotland & Wales		Minimum possible	Maximum possible

Reference: 198980

Deposit Amount: £1,153

Council Tax: Band B

Furnishing: Part-furnished

Heating Type: Electric panel heaters / Electric overnight storage heaters

Parking: Allocated Parking Space

Utilities:

- Mains Supply Electricity - Top up meter
- Mains Supply Water - metered

Drainage: Mains Private Supply Drainage

Broadband: Refer to Ofcom website www.ofcom.org.uk/phones-and-broadband

Mobile Signal: Refer to Ofcom website www.ofcom.org.uk/phones-and-broadband

Flood Risk: No Risk. For more information refer to gov.uk, check long term flood risk www.gov.uk/check-long-term-flood-risk



Two bedroom, part-furnished, flat situated within easy reach of the city centre. Located on the first floor the property with no lift in the block.

The property comprises of an entrance hallway with storage space. The hallway leads onto a spacious lounge area (dining table and chairs included) with a door into the separate kitchen space with white goods. Two double bedrooms can also be reached from the hallway, both with built in storage. Furniture included is a double bed, double mattress and two bedside tables.

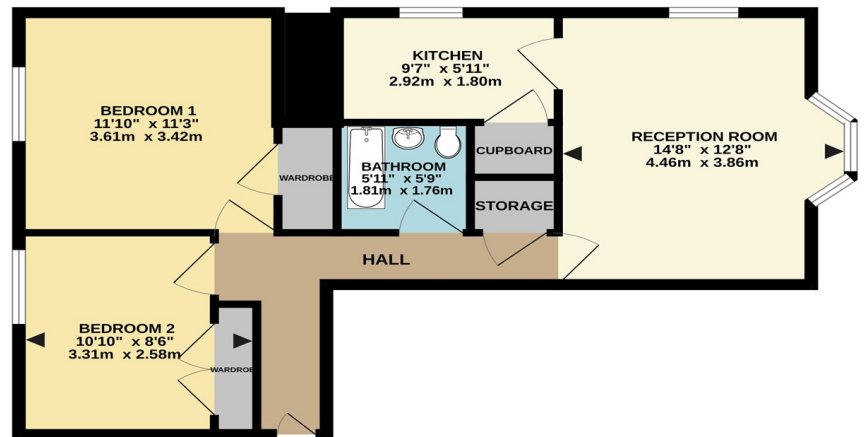
The property further benefits from allocated parking to the rear of the block for one small car.

The electricity is on a top up key meter.

Please note, the marketing photos for the property were taken before the current tenancy commenced.

For further information and to book a viewing, call Goadsby Estate Agents in Southampton.

APARTMENT



This Floor Plan is for guidance only and is NOT to SCALE
Made with Metropac ©2024

PLEASE NOTE:

Measurements quoted are approximate and for guidance only. Fixtures, fittings, services & appliances have not been tested and therefore no guarantee can be given that they are in working order. Images have been produced for information and it cannot be inferred that any item shown is included with the property. These particulars are believed to be correct but their accuracy is not guaranteed and they do not constitute an offer or form part of a contract. Solicitors are specifically requested to verify the sales particulars details in the pre-contract enquiries, in particular: price, local and other searches.

Goadsby & Harding (Residential) Ltd
Registered Office: 99 Holdenhurst Road, Bournemouth, Dorset BH8 8DY Registered in England No. 1871280

02380 710400
southamptonlettings@goadsby.com

54 London Road
Southampton, Hampshire
SO15 2AH