



Portland Rise, N4

£800,000

Dexters



Portland Rise, N4

This well presented three bedroom ground floor flat spanning over 1,100 sq.ft is being offered to the market chain free.

The property offers a spacious reception room with built in storage space and wooden flooring. The open-plan kitchen and dining area is bathed in natural light from the skylight above, with bi-folding doors leading to a private south-facing garden.

The principal bedroom, located at the front of the property, retains some original features, includes shutters, and offers built-in storage. There are two additional bedrooms, one of which could serve as a home office.

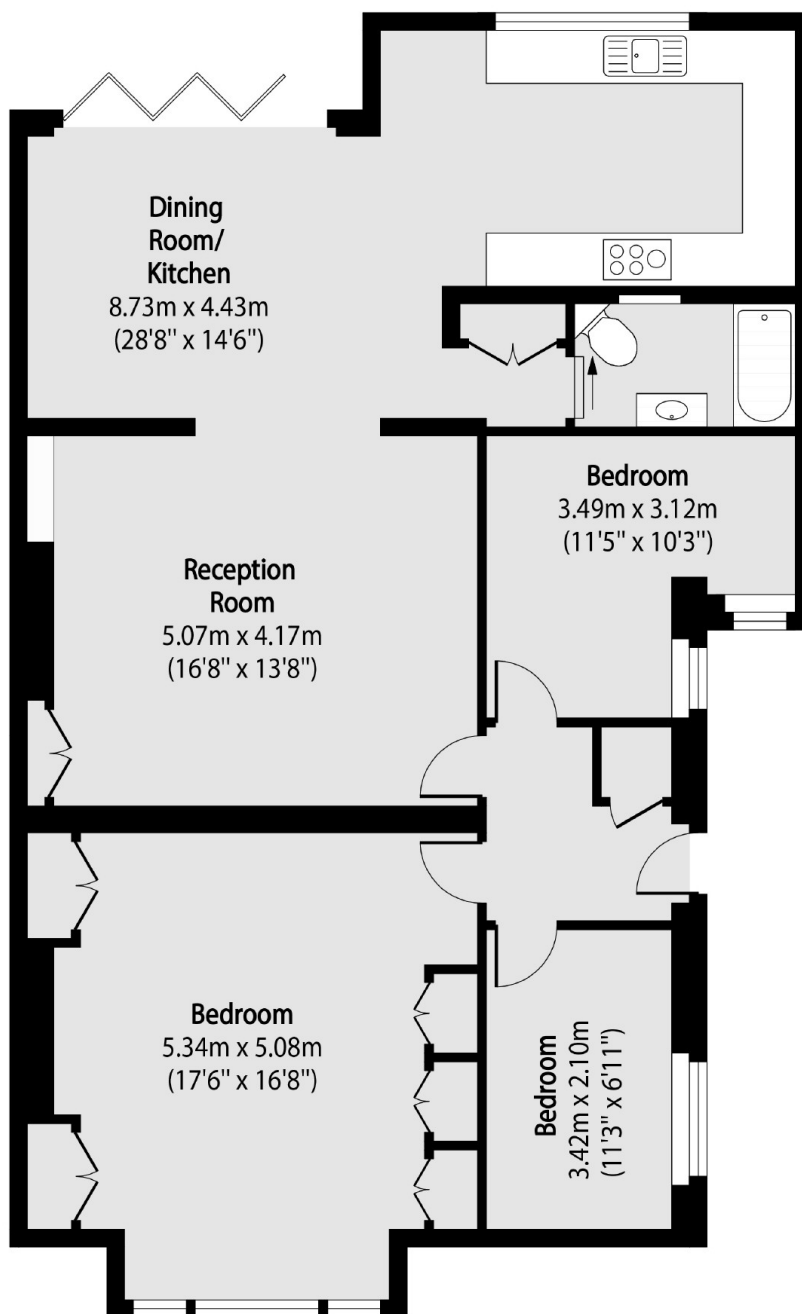
Portland Rise is located close to Finsbury Park Station (Great Northern, Thameslink, Victoria and Piccadilly Lines) as well as an array of independent shops, bars, restaurants and cafés. The property is a short walk away from the green open spaces of Finsbury Park, Clissold Park and Woodberry Wetland nature reserve.

Features

- Three Bedroom
- Open Plan Kitchen/Dining
- Leasehold
- Garden
- Excellent Transport Links
- Ample Storage



Portland Rise, London, N4



Total area (approx): 106.34 sq m (1145 sq. ft)

Dexters

Finsbury Park
87 Stroud Green Road
Finsbury Park
London
Sales
020 7483 6360

Energy Rating: C. We aim to make our particulars both accurate and reliable. However they are not guaranteed; nor do they form part of an offer or contract. If you require clarification on any points then please contact us, especially if you're traveling some distance to view. Please note that appliances and heating systems have not been tested and therefore no warranties can be given as to their good working order.

 **RICS** | Regulated
Estate Agent
and Letting Agent

[dexters.co.uk](https://www.dexters.co.uk)