



£725 Per Month

2 HUTT FARM COURT | RAVENSHEAD | NOTTINGHAM | NG15 9AW

**BuckleyBrown**  
ESTATE AGENTS



Located in the popular village of Ravenshead, this well-presented furnished home at Hutt Farm Court offers comfortable and practical living in a quiet residential setting. The property provides bright, well-proportioned accommodation ideal for individuals or small households looking for a peaceful place to settle while remaining well connected. Offered furnished, it allows tenants to move straight in with ease while still enjoying a neutral and welcoming interior.

Positioned close to local amenities, green spaces and everyday conveniences, the property also benefits from straightforward access to surrounding villages and nearby road links for commuting. Just off Nottingham Road, the property enjoys superb transport links, making Nottingham city centre easily accessible.

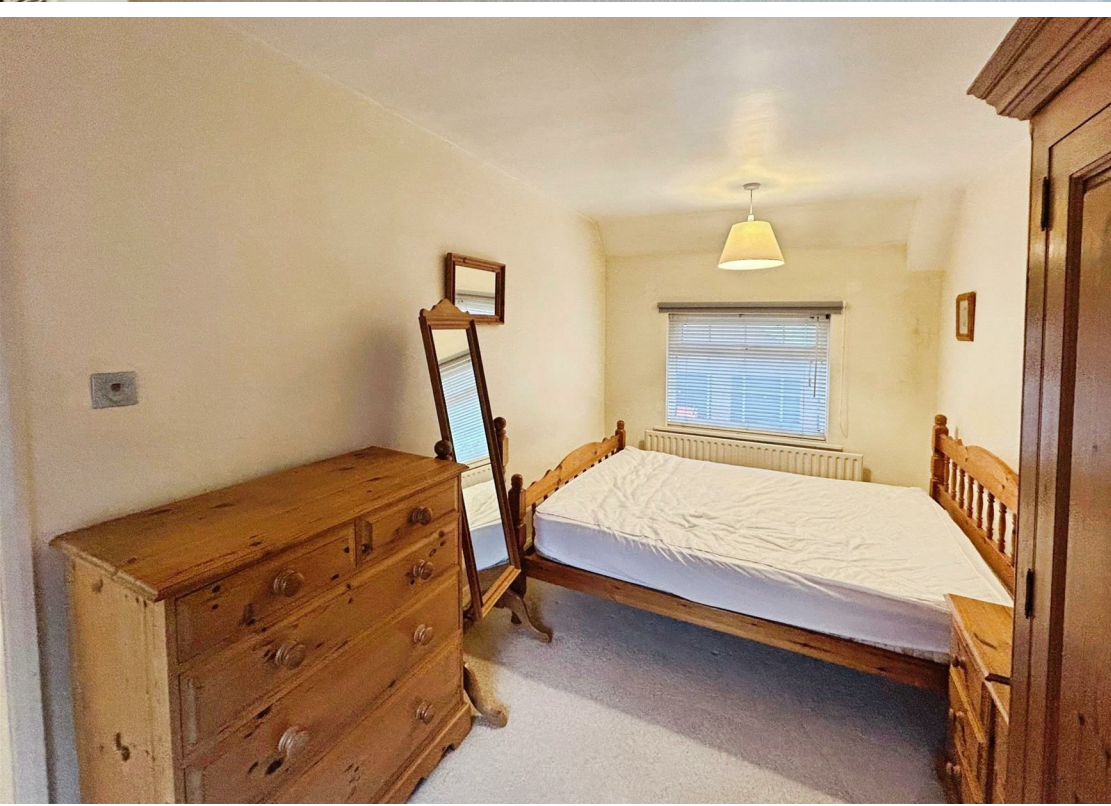
Set within a well-maintained development, this is an excellent opportunity to rent a furnished home in a sought-after village location that balances calm surroundings with everyday convenience.

Call today to avoid disappointment!



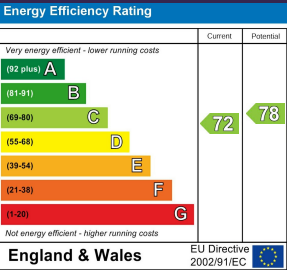








IMPORTANT: we would like to inform prospective purchasers that these sales particulars have been prepared as a general guide only. A detailed survey has not been carried out, nor the services, appliances and fittings tested. Room sizes should not be relied upon for furnishing purposes and are approximate. If floor plans are included, they are for guidance only and illustration purposes only and may not be to scale. If there are any important matters likely to affect your decision to buy, please contact us before viewing the property.



2 HUTT FARM COURT  
RAVENSHEAD  
NOTTINGHAM  
NG15 9AW

## BuckleyBrown Estate Agents

55 - 57 Leeming Street | Mansfield | Nottinghamshire | NG18 1ND

23 High Street | Edwinstowe | Nottinghamshire | NG21 9QP

1 Market Place | Bolsover | Chesterfield | S44 6PN

[www.buckleybrown.co.uk](http://www.buckleybrown.co.uk)

t: 01623 633 633

t: 01623 633 633

t: 01246 605121

**IMPORTANT:** we would like to inform prospective purchasers that these sales particulars have been prepared as a general guide only. A detailed survey has not been carried out, nor the services, appliances and fittings tested. Room sizes should not be relied upon for furnishing purposes and are approximate. If floor plans are included, they are for guidance only and illustration purposes only and may not be to scale. If there are any important matters likely to affect your decision to buy, please contact us before viewing the property.

