



## Clos Morfa Heli

Guide Price £320,000 to £330,000

- Cul-De-Sac Location
- Upgraded Kitchen
- En-Suite
- Downstairs WC
- Garage
- Four Bedroom Detached Home
- EPC Rating: B



 4  2  1

**Pinkmove**

01633 746088  
team@pinkmove.co.uk



## About the property

This beautifully maintained four-bedroom detached property is offered for sale in an enviable cul-de-sac position, boasting a range of high-quality upgrades commissioned by the current owners at the time of build.

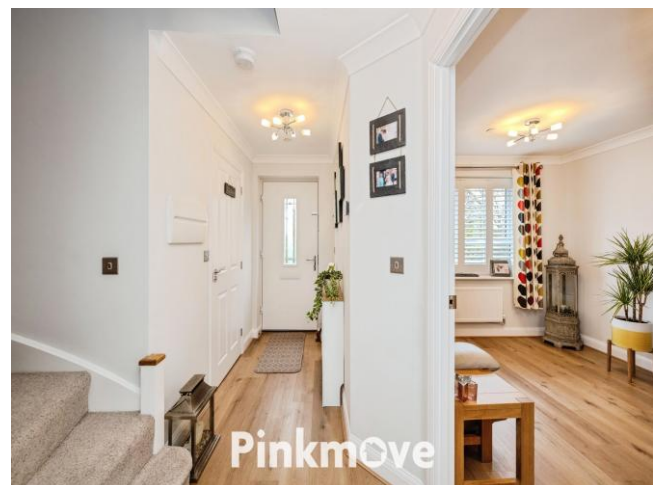
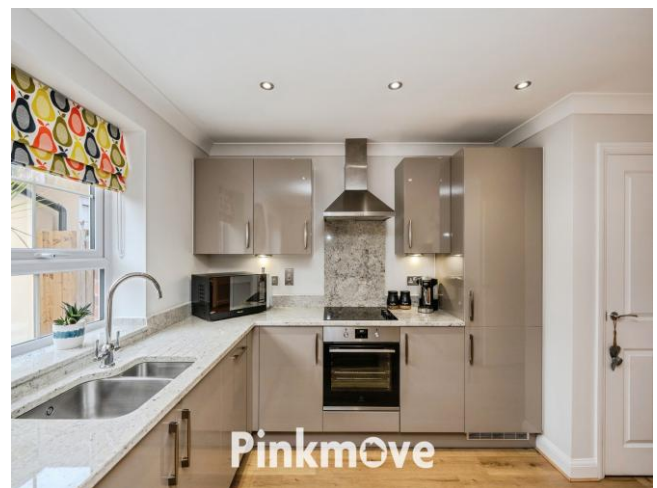
Upon entering the spacious hallway, it is immediately apparent that this is a much-loved and exceptionally cared-for home. To the left sits the bright and welcoming lounge, while the stairs rise to the first floor. The ground-floor cloakroom has been enhanced with stylish floor-to-ceiling tiling.

The impressive kitchen/dining area is situated at the rear of the property and features quartz worktops, upgraded cabinetry, and ample space for family dining. French doors open out to the enclosed rear garden, creating a perfect space for entertaining and everyday family living.

Upstairs, the main bedroom benefits from a contemporary en suite, again upgraded with additional tiling. Three further well-proportioned bedrooms and a modern family bathroom, with enhanced tiling throughout.

Externally, the home offers attractive front and rear gardens, with the added convenience of a driveway and garage positioned to the side of the property.

This stunning home is truly ready to move into and presents an ideal opportunity for families seeking comfort, quality, and a peaceful location.





## Accommodation

Lounge

Kitchen

Wc

Bedroom 1

En-Suite

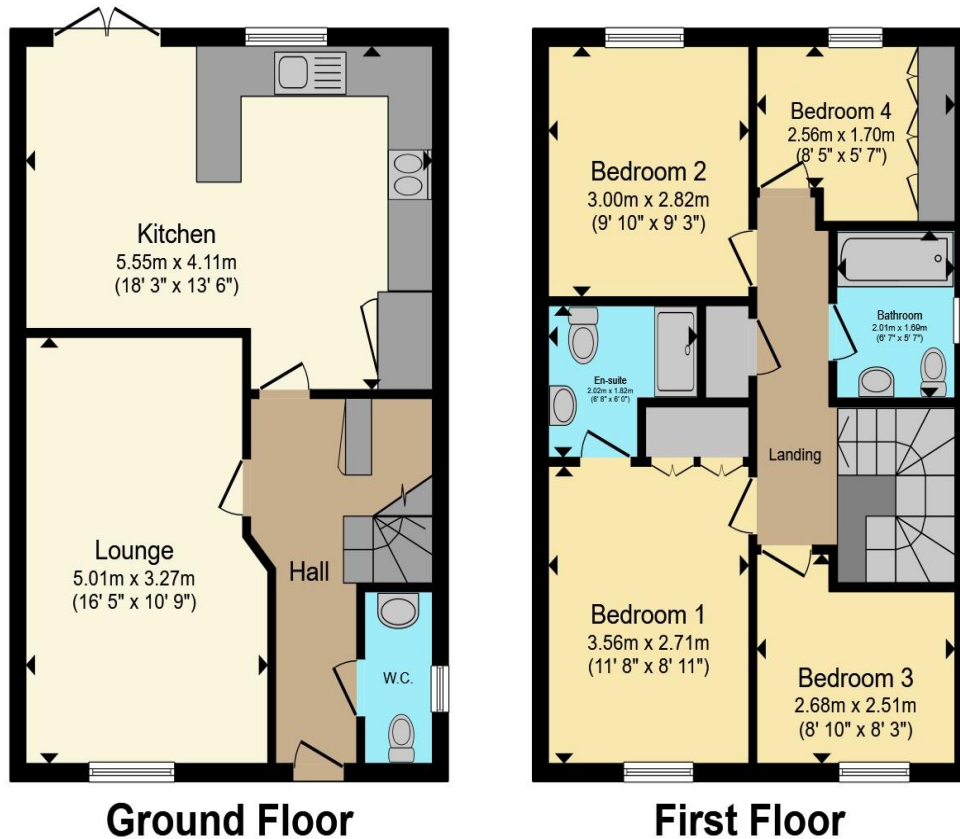
Bedroom 2

Bedroom 3

Bedroom 4

Bathroom

## Floorplan



**Ground Floor**

**First Floor**

Total floor area 94.2 sq.m. (1,014 sq.ft.) approx

This floor plan is for illustrative purposes only. It is not drawn to scale. Any measurements, floor areas (including any total floor area), openings and orientation are approximate. No details are guaranteed, they cannot be relied upon for any purpose and they do not form part of any agreement. No liability is taken for any error, omission or misstatement. A party must rely upon its own inspection(s). Powered by [www.focalagent.com](http://www.focalagent.com)

Pinkmove

## Important Information

Note while we endeavour to make our sales details accurate and reliable, if there is any point which is of particular interest to you, please contact the office and we will be pleased to confirm the position for you. We have not personally tested any apparatus, equipment, fixtures, fittings or services and cannot verify they are in working order or fit for their purposes. Nothing in these particulars is intended to indicate that carpets or curtains, furnishings or fittings, electrical goods (whether wired or not). Gas fires or light fittings or any other fixtures not expressly included form part of the property offered for sale. This computer generated Floorplan, if applicable, is intended as a general guide to the layout and design of the property. It is not to scale and should not be relied upon for dimensions. Tenure: We cannot confirm the tenure of the property as we have not had access to the legal documents. The buyer is advised to obtain verification from their solicitor or surveyor.

Peter Alan Limited is registered in England and Wales under company number 2073153, Registered Office is Cumbria House, 16-20 Hockliffe Street, Leighton Buzzard, Bedfordshire, LU7 1GN. VAT Registration Number is 500 2481 05. For activities relating to regulated mortgages and non-investment insurance contracts, Peter Alan Limited is an appointed representative of Connells Limited which is authorised and regulated by the Financial Conduct Authority. Connells Limited's Financial Services Register number is 302221. Most buy-to-let

