



76544576 The Landsby, Elvin Gardens, Wembley, HA9 0GW
£2,149 Per month



76544576 The Landsby, Elvin Gardens, Wembley, HA9 0GW

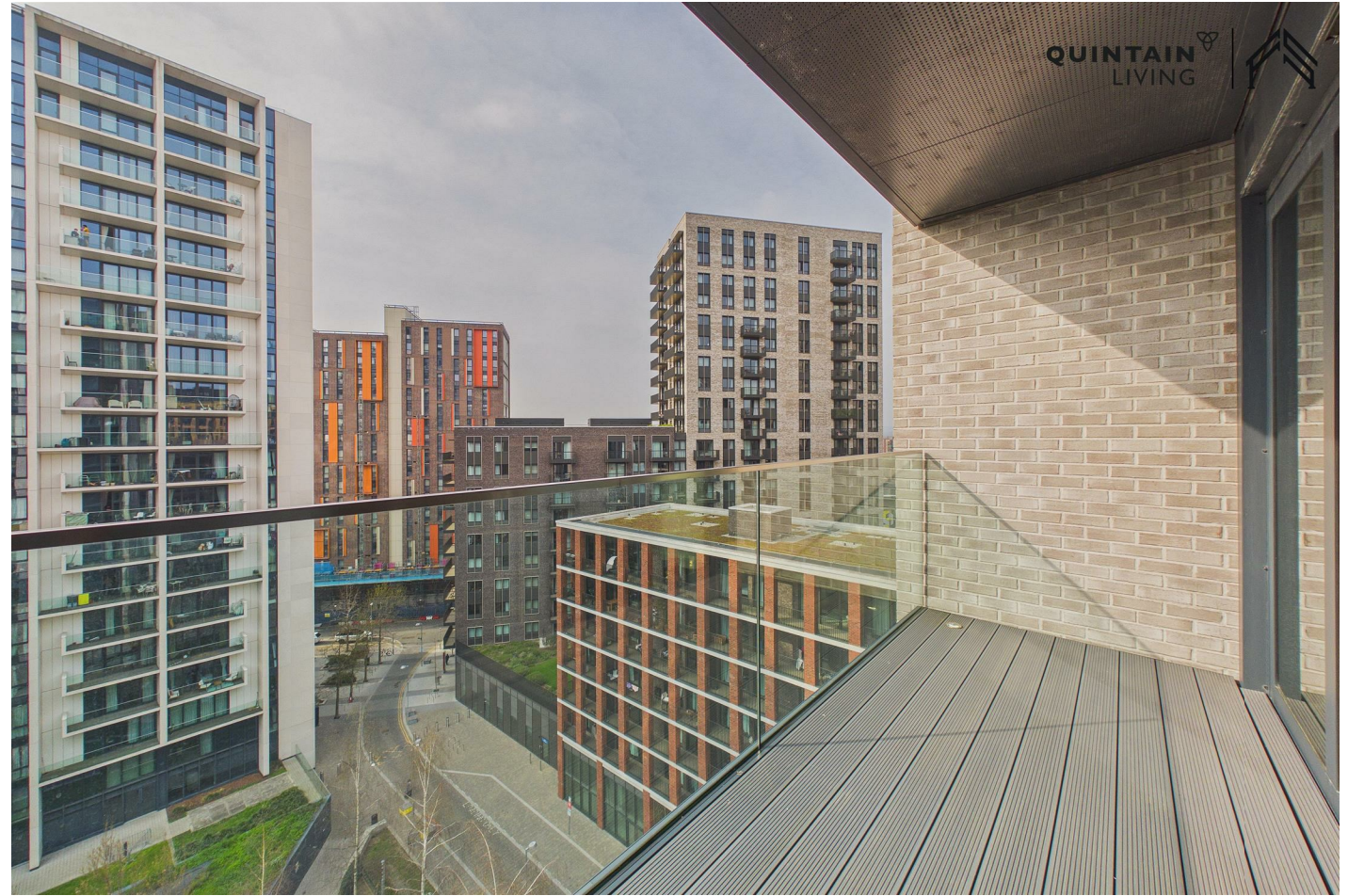
£2,149 Per month

Limited-Time Offer - up to 16% off. A Greener, Smarter Way to Live in Wembley Park. Thoughtfully designed for modern living, this apartment combines relaxed Nordic style with practical luxury. Oak flooring, a striking dark blue kitchen softened by pale accents, and premium Samsung Chef Collection appliances create a refined yet inviting aesthetic!

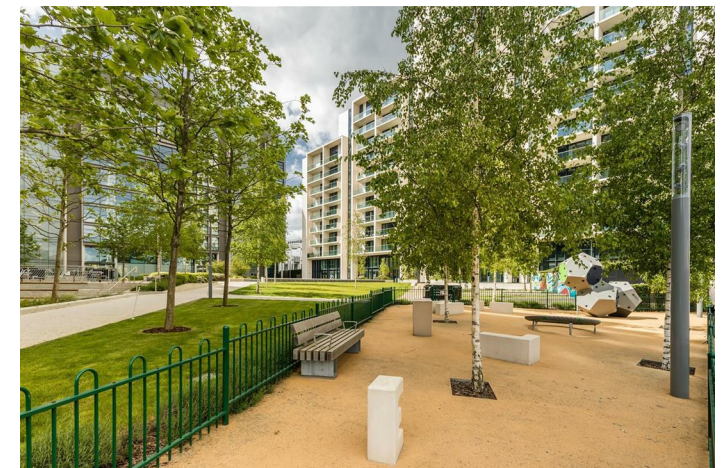
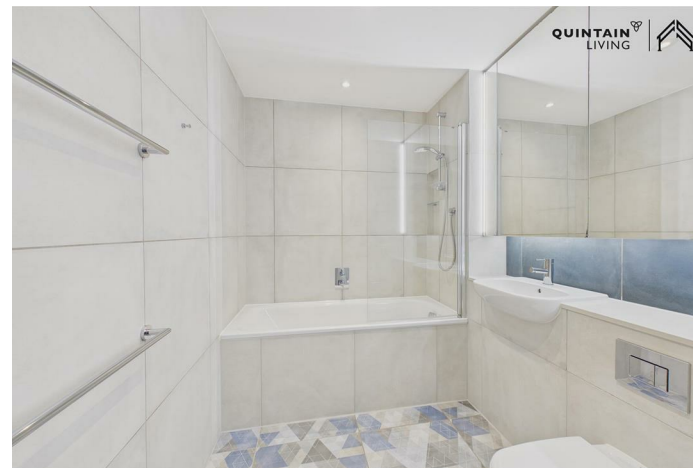
Located within Landsby, the building embraces spacious, Scandi-inspired design while fostering a true neighbourhood atmosphere. Residents benefit from two beautifully landscaped podium gardens, two rooftop terraces with BBQ areas, a residents' kitchen equipped with the full Samsung Chef Collection range, and a stylish lounge - ideal for working from home, watching the match, or hosting private events.

Elevated above the buzz of Wembley Park, The Landsby offers a peaceful yet connected lifestyle in one of London's most vibrant new districts - just moments from Bread Ahead, Boxpark, Troubadour Theatre and over 70 shops, cafés and restaurants at the London Designer Outlet. Managed by Quintain Living, the award-winning team behind Wembley Park. Photos show a very similar apartment in this building however the exact layout/floor/view may vary. Other incentives available T&Cs apply; see Quintain Living website for details.

Description



Situation

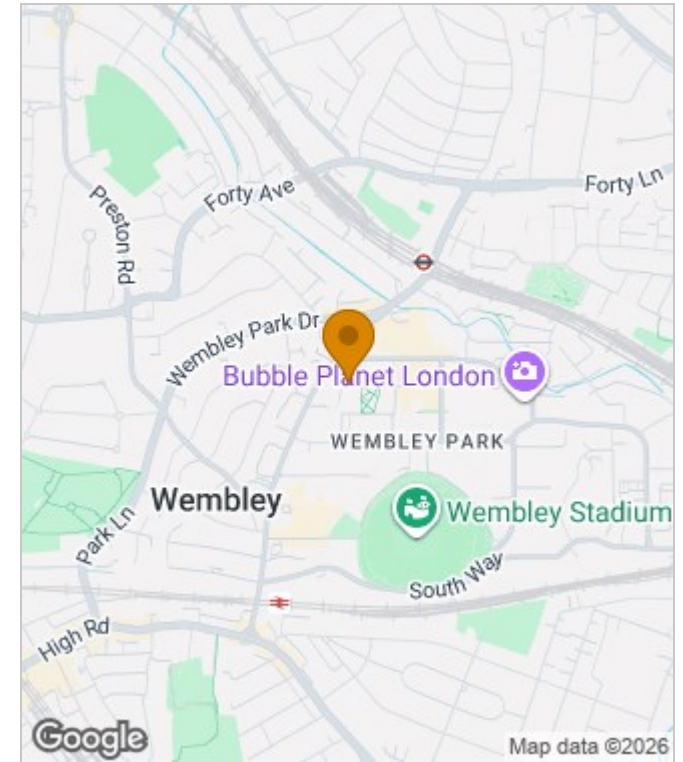


Furnished
Council Tax Band: C
Available:

Floor Plans



Area Map



Energy Performance Graph



These particulars, whilst believed to be accurate are set out as a general outline only for guidance and do not constitute any part of an offer or contract. Intending purchasers should not rely on them as statements of representation of fact, but must satisfy themselves by inspection or otherwise as to their accuracy. No person in this firm's employment has the authority to make or give any representation or warranty in respect of the property.