



1 Bedroom | 1 Bathroom | 1 Reception Room

Carew Road | Wallington | SM6 8QQ

£325,000

LOFT

Carew Road |
Wallington | SM6 8QQ
£325,000

- Detached one-bedroom bungalow set back from the road, offering real privacy
- Open-plan kitchen/living room, a great socialising space
- Separate WC and bathroom with sink in the middle
- Garden to the side with shed with power
- Eco-friendly with solar panels, heat pump and air conditioning
- Ideally situated within walking distance to shops and Mellows park
- Great schools and bus links close by

Ground Floor

Open Plan

Kitchen/Reception Room

16'9 x 15'9 (5.11m x 4.80m)

Bedroom

8'7 x 8'6 (2.62m x 2.59m)

Bathroom

Separate WC

Outside

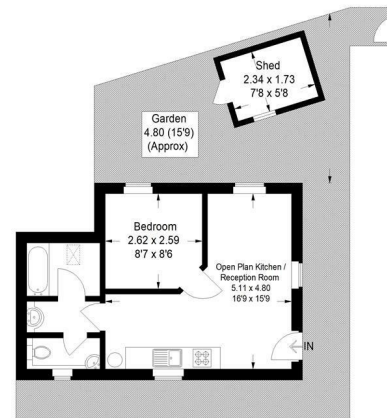
Garden

Shed

7'8 x 5'8 (2.34m x 1.73m)

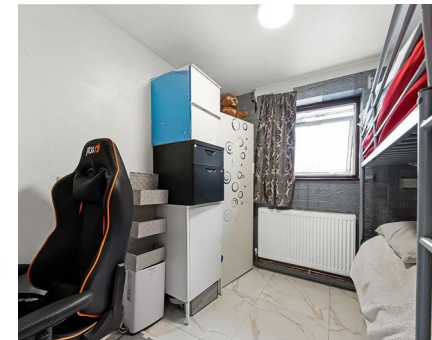


Carew Road, SM6
Approximate Gross Internal Area
(Excluding Shed)
32.1 sq m / 346 sq ft



Ground Floor

This plan is for layout guidance only. Not drawn to scale unless stated. Windows and door openings are approximate. Whilst every care is taken in the preparation of this plan, please check all dimensions, shapes and compass bearings before making any decisions reliant upon them. (ID1312495)



EPC Rating:

23a High Street
Purley
Surrey
CR8 2AF
0208 660 8070
hello@loft-estates.co.uk

