



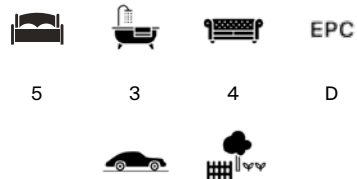
QUEENS ROAD

Wimbledon, SW19



QUEENS ROAD

A Victorian double fronted five bedroom house for sale with a south facing garden and carriage driveway on Queens Road in the sought after South Park Gardens area.



Local Authority: London Borough of Merton

Council Tax band: G

Tenure: Freehold

Guide Price: £2,400,000



ABOUT THE PROPERTY

Set within the popular South Park Gardens area of Wimbledon, this beautifully extended five double bedroom, three bathroom Victorian family home combines exquisite period detailing with thoughtfully designed modern living spaces. Offering over 2,350 sq ft of internal accommodation, plus a cellar and bespoke storage, the property has been meticulously finished throughout and features a stunning south facing garden and a carriage way driveway for multiple cars.

The ground floor showcases an impressive full width rear extension, creating a spectacular kitchen / dining / family room flooded with natural light from multiple skylights and framed by expansive bi folding doors that open seamlessly onto the garden. This contemporary space is perfect for everyday family life and entertaining, with a stylish island, generous dining area and a seating area overlooking the garden.











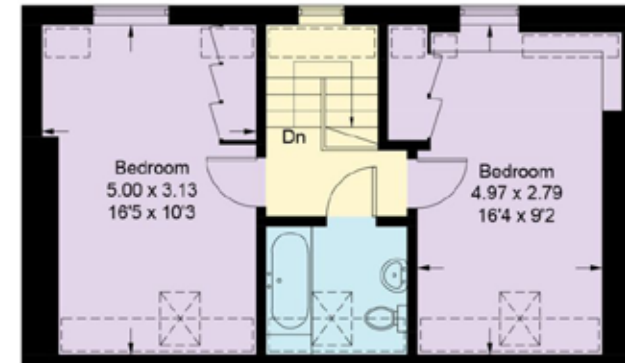
To the front of the house, the formal drawing room is rich in period character, featuring ornate ceiling cornicing, a decorative ceiling rose, a striking fireplace and elegant sash windows. The adjacent double reception room provides a versatile second living or dining area, enhanced by a beautifully presented interior with bold tones, high ceilings, intricate cornicing and another feature fireplace. A practical utility room and ground floor washroom further enhance everyday convenience, while the cellar offers valuable additional storage.



The upper floors provide five generous double bedrooms, each tastefully decorated and benefiting from excellent natural light. The bedrooms are served by two well appointed bathrooms, including a stand out spacious, modern four piece bathroom suite on the first floor. With its blend of period elegance, high quality finishes and exceptional contemporary extensions, this home delivers both sophistication and functionality. Ideally situated on the sought after Queens Road, it is perfectly positioned for access to Wimbledon's amenities, transport links, schools and green open spaces.

Please note, the vendor has made us aware that the property has previously been underpinned.
You should ensure you take independent advice on this.





Second Floor



First Floor

Approximate Gross Internal Area = 218.5 sq m / 2352 sq ft
 Cellar = 10.3 sq m / 111 sq ft / Store = 9.2 sq m / 99 sq ft
 Total = 238.0 sq m / 2562 sq ft

This plan is for layout guidance only. Not drawn to scale unless stated. Windows and door openings are approximate. Whilst every care is taken in the preparation of this plan, please check all dimensions, shapes and compass bearings before making any decisions reliant upon them. (ID767266)

Ross Jordan

+44 20 3830 8634

ross.jordan@knightfrank.com

Knight Frank Wimbledon

58 High Street, London

SW19 5EE

knightfrank.co.uk

Your partners in property

1. Particulars: These particulars are not an offer or contract, nor part of one. You should not rely on statements given by Knight Frank in the particulars, by word of mouth or in writing ("information") as being factually accurate about the property, its condition or its value. Neither Knight Frank nor any joint agent has any authority to make any representations about the property, and accordingly any information given is entirely without responsibility on the part of Knight Frank. 2. Material Information: Please note that the material information is provided to Knight Frank by third parties and is provided here as a guide only. While Knight Frank has taken steps to verify this information, we advise you to confirm the details of any such material information prior to any offer being submitted. If we are informed of changes to this information by the seller or another third party, we will use reasonable endeavours to update this as soon as practical. 3. Photos, Videos etc: The photographs, property videos and virtual viewings etc. show only certain parts of the property as they appeared at the time they were taken. Areas, measurements and distances given are approximate only. 4. Regulations etc: Any reference to alterations to, or use of, any part of the property does not mean that any necessary planning, building regulations or other consent has been obtained. A buyer must find out by inspection or in other ways that these matters have been properly dealt with and that all information is correct. 5. Fixtures and fittings: A list of the fitted carpets, curtains, light fittings and other items fixed to the property which are included in the sale (or may be available by separate negotiation) will be provided by the Seller's Solicitors. 6. VAT: The VAT position relating to the property may change without notice. 7. To find out how we process Personal Data, please refer to our Group Privacy Statement and other notices at <https://www.knightfrank.com/legals/privacy-statement>.

Particulars dated February 2026. Photographs and videos dated February 2026. All information is correct at the time of going to print. Knight Frank is the trading name of Knight Frank LLP. Knight Frank LLP is a limited liability partnership registered in England and Wales with registered number OC305934. Our registered office is at 55 Baker Street, London W1U 8AN. We use the term 'partner' to refer to a member of Knight Frank LLP, or an employee or consultant. A list of members names of Knight Frank LLP may be inspected at our registered office. If you do not want us to contact you further about our services then please contact us by either calling 020 3544 0692, email to marketing.help@knightfrank.com or post to our UK Residential Marketing Manager at our registered office (above) providing your name and address.

