



£290,000

Siena Gardens, Forest Town,  
Mansfield,



Welcome to **BuckleyBrown**, where every home is carefully presented, so you can explore with clarity and confidence.

**BuckleyBrown**  
ESTATE AGENTS

"A ready-to-move-into bungalow for £300,000, offering exceptional versatility in a truly fantastic location. Properties like this are increasingly rare, especially at such an attractive price point. Designed to suit a range of lifestyles, this appealing home combines space, convenience, and comfort—making it an ideal choice for those seeking value without compromise."

- Courtney, Valuer



## STYLISH SINGLE-LEVEL LIVING

From the moment you arrive, this beautifully modernised three-bedroom detached bungalow makes an immediate impression with its attractive frontage and well-maintained driveway, setting the tone for what lies beyond.

Internally, the property has been tastefully updated throughout and offers stylish, ready-to-move-into accommodation, thoughtfully arranged to provide comfort, practicality, and easy single-level living, making it ideal for a wide range of buyers.



## THE FINER DETAILS

***This well-presented home offers generous and versatile accommodation throughout, ideal for modern family living and entertaining.***

This property features a spacious living room with a box window to the front, allowing plenty of natural light to flow in. Double doors lead through to a conservatory/bar area, creating a fantastic additional reception space with direct access out to the garden. The kitchen is fully equipped with a sleek gloss finish, offering both style and practicality with ample storage and workspace.

Moving further, the property provides three well-proportioned bedrooms, including a principal bedroom with its own en suite, along with a family bathroom accessed from the hallway, serving the remaining bedrooms.

Externally, the home benefits from a well-kept front lawn, a private driveway, and a garage, which is currently being utilised as a home gym. To the rear, there is a wonderful enclosed garden, offering a private and versatile outdoor space ideal for relaxing or entertaining.





**BuckleyBrown**  
ESTATE AGENTS



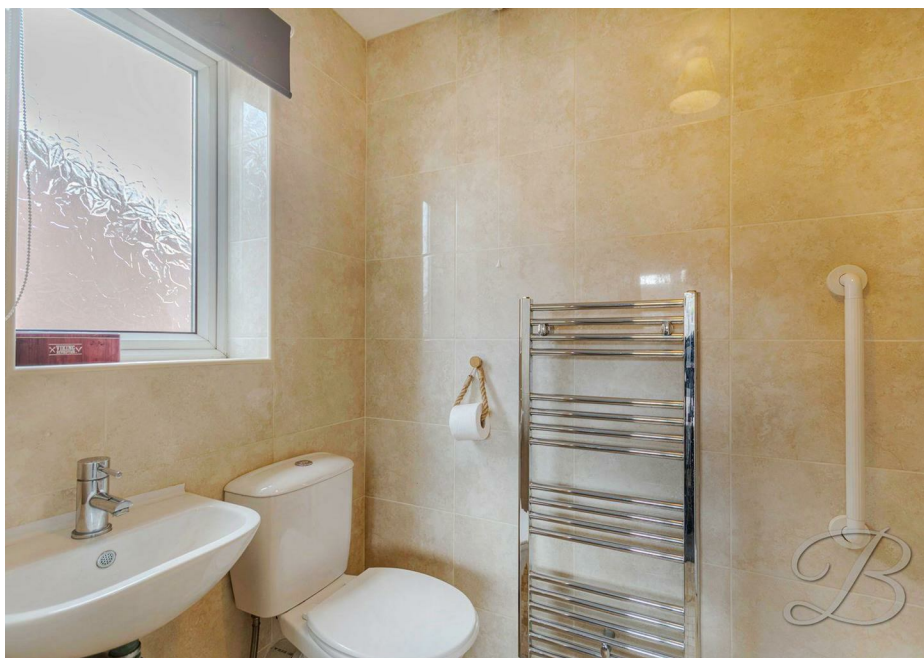




## LIFE IN FOREST TOWN

*Forest Town is a well-established and highly regarded residential area on the outskirts of Mansfield, offering a popular blend of community living, convenience, and access to surrounding countryside. Situated in the heart of Nottinghamshire, it provides an ideal setting for those seeking a quieter suburban lifestyle while still being within easy reach of nearby town centre amenities and excellent transport links.*

The area benefits from a strong local community feel, with a range of everyday amenities including shops, schools, cafés and leisure facilities all close by. Residents also have easy access to Mansfield town centre, which offers a wider selection of retail, dining and entertainment options, including supermarkets, independent stores and the Four Seasons Shopping Centre. This balance of local convenience and nearby town facilities makes Forest Town particularly appealing to families, professionals and downsizers alike.



Surrounded by attractive green spaces and close to the edge of Sherwood Forest, Forest Town is especially popular with outdoor enthusiasts. The area offers a variety of walking routes, parks and woodland areas, providing plenty of opportunities to enjoy nature and an active lifestyle, while still being well connected to the wider region.



Whilst every attempt has been made to ensure the accuracy of the floor plan contained here, no responsibility is taken for incorrect measurements of doors, windows, appliances and room or any error, omission or misstatement. Exterior and interior walls are drawn to scale based on interior measurements. Any figure given is for initial guidance only and should not be relied on as basis of valuation. These plans are for marketing purposes only and should be used as such by any prospective purchase. Specially no guarantee is should not be relied on as a basis of valuation. These plans are for marketing purposes only and should be used as such by any prospective purchase. Specifically no guarantee is given on the total square footage of the property if quoted on this plan.

CC Ltd ©2018

## Key Features

Garage converted into a gym

---

Modernised and up to date throughout

---

Off road parking available to the front

---

New radiators have been added throughout

---

Expansive living room

---

Three generous sized bedrooms

---

Two contemporary bathrooms

---

---

---

---

---



These particulars are intended as a guide only and do not form part of any offer or contract. All descriptions, measurements, images and plans are provided for illustration purposes and should not be relied upon as statements of fact. Prospective purchasers should satisfy themselves as to the accuracy of the information. Buckley Brown Estate Agents accept no liability for any loss arising from reliance on these details.

© Buckley Brown Estate Agents 2026. All rights reserved.

Exceptional homes deserve  
exceptional representation.

Let's Chat.

01623 633633

[mansfield@buckleybrown.co.uk](mailto:mansfield@buckleybrown.co.uk)

[buckleybrown.co.uk](https://www.buckleybrown.co.uk)

**BuckleyBrown**  
ESTATE AGENTS