

Guide Price £550,000



Rosedale, 17 Honiton Road, Cullompton, Devon, EX15 1PA

- A gardener's paradise, 0.33 acre rear garden
- Separate sitting and dining rooms
- Contemporary kitchen, overlooking the garden
- Gas central heating and uPVC double glazing
- Plenty of driveway parking and garage
- 3 double bedrooms, en suite shower room
- Second lounge and conservatory extension
- Downstairs shower room and utility room
- Useful range of outbuildings and greenhouse
- Exeter and Taunton 20-30 minutes' drive

Sales, Lettings, Mortgages:

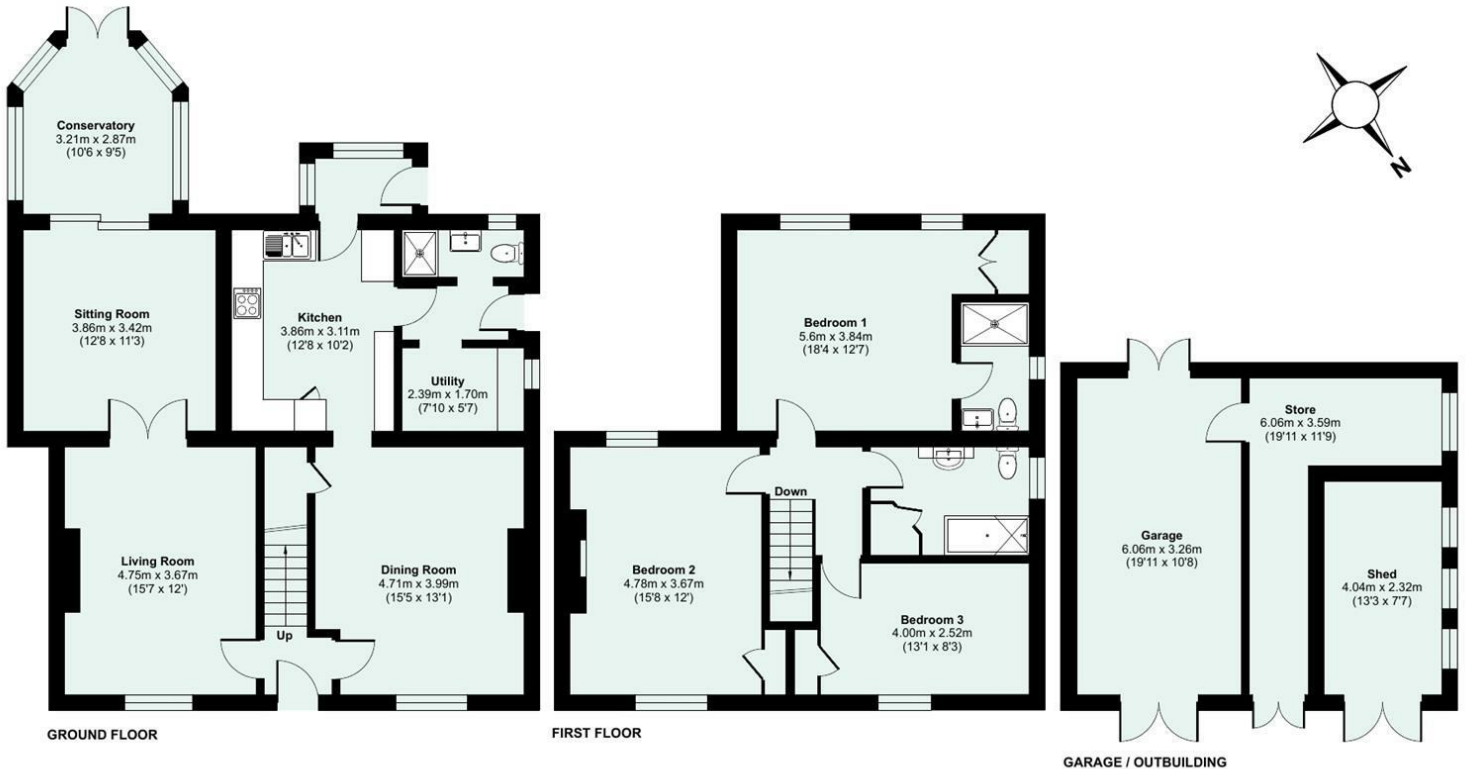
Bampton 01398 332006 | Cullompton 01884 32100 | Tiverton 01884 253500



Watch the Seddons Video Tour

Lying within a plot of about 0.5 acres, this well presented house offers spacious family accommodation with an extensive, established garden, useful garage, workshop, sheds and a greenhouse. Perfect location for commuting to Exeter, close to the M5.

Approximate Area = 1699 sq ft / 157.8 sq m
 Garage = 336 sq ft / 31.2 sq m
 Outbuilding = 99 sq ft / 9.1 sq m
 Total = 2134 sq ft / 198.1 sq m
 For identification only - Not to scale



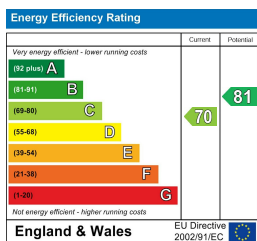
Floor plan produced in accordance with RICS Property Measurement 2nd Edition, Incorporating International Property Measurement Standards (IPMS2 Residential). © ncthecom 2026. Produced for Seddon Estate Agents LLP. REF: 1431696



Council Tax Band

D

EPC Rating



Viewings

Viewings by arrangement only. Please call 01884 32100 to make an appointment.