



The Croft, Christchurch, Wisbech, PE14 9PU

Village Location - Mid Terraced House - 2 Double Bedrooms - Kitchen & Lounge/Diner - Ground Floor WC - First Floor Bathroom - Enclosed Rear Garden - Allocated Parking - Available Start Of February 2026 - Deposit - £951.92

£825 pcm



Ground Floor

Entrance Hall

Entrance door and window to front, storage cupboard, radiator, laminate flooring, stairs to first floor and door to:

Kitchen

3.55m (11'8") x 2.10m (6'11")
Fitted with a matching range of base and eye level units with worktop space over, 1+1/2 bowl stainless steel sink with tiled splashbacks, electric hob with extractor hood over and oven, integrated fridge/freezer, plumbing for washing machine, radiator, tiled flooring and double-glazed window to front.

Lounge/Diner

4.31m (14'2") x 4.88m (16')max
Double door and window to rear, radiator and laminate flooring.

WC

Fitted with two-piece suite comprising, wash hand basin and low-level WC, tiled splashbacks, radiator and laminate flooring.

First Floor

Bedroom 1

4.32m (14'2") x 2.97m (9'9")
Two windows to rear, built in wardrobe and radiator.

Bedroom 2

3.28m (10'9") x 3.24m (10'6")max
Two double glazed windows

to front, built in wardrobe and radiator.

Bathroom

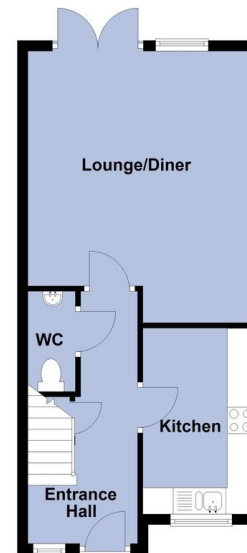
Fitted with three-piece suite comprising bath with shower attachment over, vanity wash hand basin and WC, part tiled walls and heated towel rail.

Outside

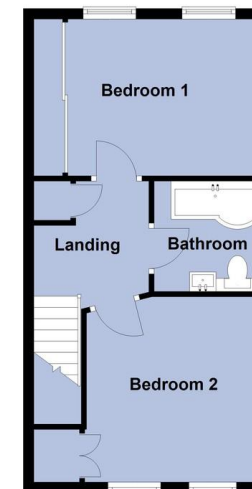
The property has allocated parking and an enclosed garden to rear which is partly patio, partly laid to lawn and a shed.

EPC - TBC

Ground Floor



First Floor



Call to arrange a viewing **01354 696700**

T Payne & Co
SALES & LETTINGS

Agents Notes: Whilst every care has been taken to prepare these sales particulars, they are for guidance purposes only. All measurements are approximate and for general guidance purposes only and whilst every care has been taken to ensure their accuracy, they should not be relied upon and potential buyers are advised to recheck the measurements.

