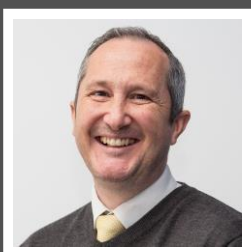
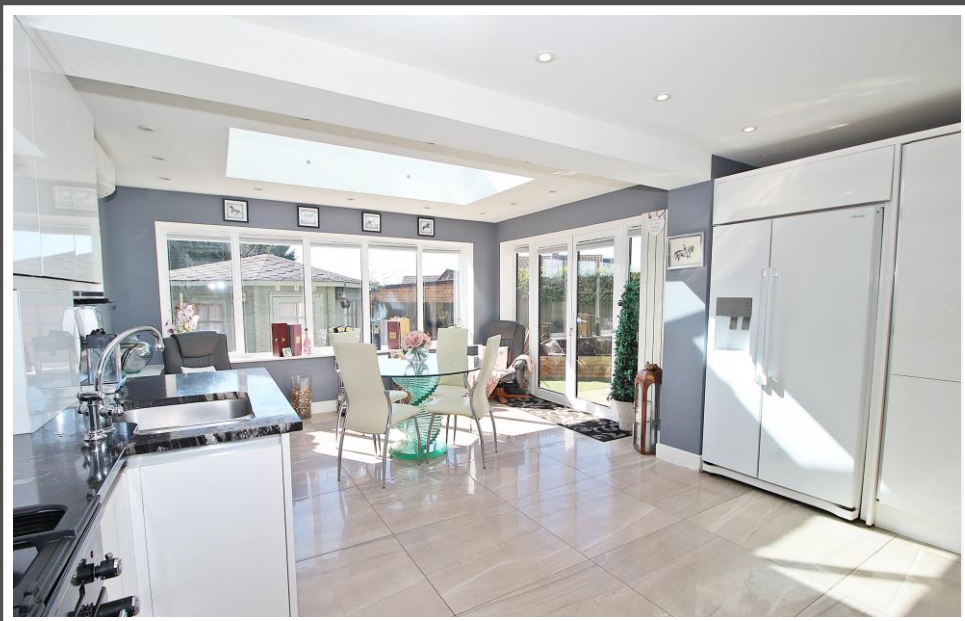


Love Homes



Wardhedges Road, Wardhedges, Bedfordshire MK45 5ED

A welcoming reception hall leads to a cloakroom and stairs. The impressive 20ft x 14ft 8 kitchen/breakfast room features granite worktops, roof lantern, air conditioning, and French doors to the garden. Additional ground-floor spaces include a front-facing dining room with fireplace, a bright dual-aspect living room with wood flooring, a utility room with garden access, and a study area. Upstairs are three bedrooms and a modern family bathroom, with the main bedroom enjoying fitted wardrobes, air conditioning, and an en-suite. Outside offers a secluded south-facing garden, summerhouse, secure gated driveway, and ample off-road parking.



This property is presented by Duncan Stead - a Love Homes property expert with over 25 years' experience.

Find out more about this property by scanning the QR code.



2.7m



3



3



2

Tenure: Freehold

Council Tax: C



Wardhedges is a small and peaceful rural hamlet in Bedfordshire, offering a quiet village lifestyle surrounded by open countryside. Known for its semi-rural setting, it appeals to those seeking privacy and a strong sense of community while remaining conveniently located for nearby towns and transport links. The area enjoys scenic walks, a relaxed atmosphere, and easy access to local amenities, schools, and road networks, making it ideal for families and commuters alike who value countryside living without complete isolation.



GROUND FLOOR



1ST FLOOR



Drawn by Love Homes for illustrative purposes only. Measurements and areas shown are approximate.
Made with Metropix ©2025

Score	Energy rating	Current	Potential
92+	A		
81-91	B		
69-80	C		
55-68	D		
39-54	E		
21-38	F		
1-20	G		

EPC RATING TO FOLLOW

5 The Russell Centre, Coniston Road, Flitwick, MK45 1QY
Tel: 01525 713111

Email: flitwick@lovehomes.uk

www.lovehomes.uk



These particulars are set out as a general outline in accordance with the Property Misdescriptions Act (1991) only for the guidance of intending purchasers or lessees, and do not constitute any part of an offer or contract. Details are given without any responsibility, and any intending purchasers, lessees or third parties should not rely on them as statements or representations of fact but must satisfy themselves by inspection or otherwise as to the correctness of each of them. We have not carried out a structural survey and the services, appliances and specific fittings have not been tested. All photographs, measurements, floor plans and distances referred to are given as a guide only and should not be relied upon for the purchase of carpets or any other fixtures or fittings. Gardens, roof terraces, balconies and communal gardens as well as tenure and lease details cannot have their accuracy guaranteed for intending purchasers. Lease details, service ground rent (where applicable) are given as a guide only and should be checked and confirmed by your solicitor prior to exchange of contracts. No person in the employment of Love Homes has any authority to make any representation or warranty whatever in relation to this property. Purchase prices, rents or other prices quoted are correct at the date of publication and, unless otherwise stated, are exclusive of VAT. We retain the copyright in all advertising material used to market this Property. All information is as advised by the seller and subject to change. Council tax bands can be subject to change by the local council.

Love Homes