



## Gilbey Road, SW17

### £1,000,000

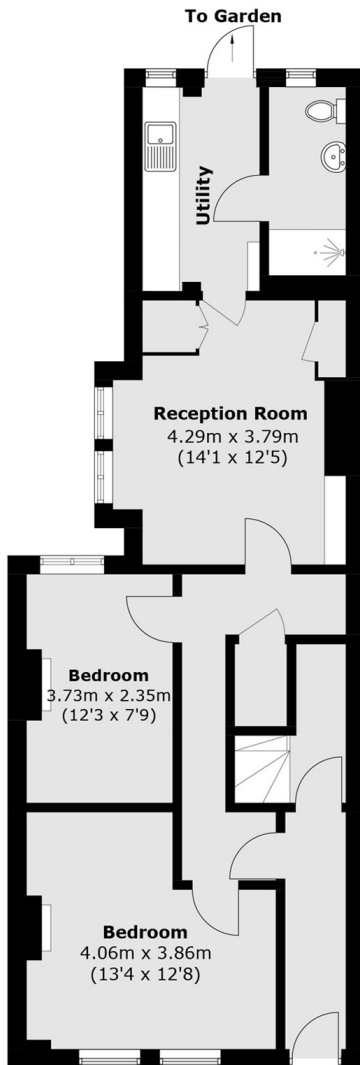
A substantial freehold building spanning to just shy of 1,800 sqft over three floors currently positioned as two separate units with five bedrooms, a large kitchen, utility room, private garden and generous reception room. The property has been recently refurbished and represents a superb opportunity for an incoming purchaser to occupy as one dwelling or for further alterations (STPP). \*CGI Imagery

Gilbey Road is a sought after residential road in the heart of Tooting with it's many shops, bars and restaurants on the doorstep, with Tooting Broadway Underground just a stone's throw away which is highly convenient to get to London in a heartbeat.

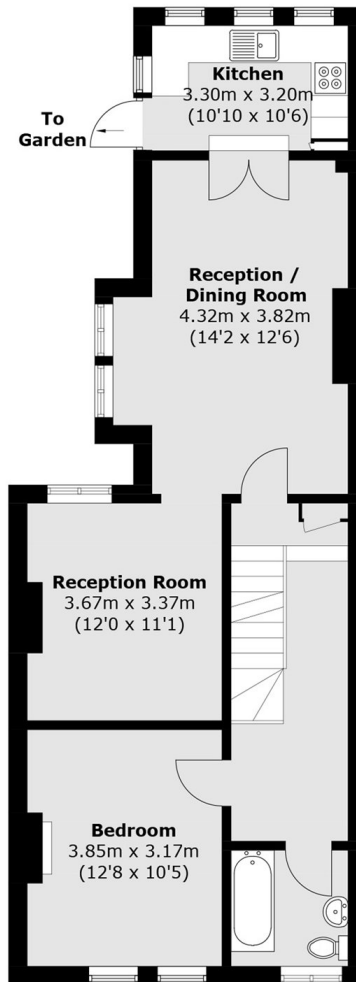
### Features

- Five Bedrooms
- Freehold Building
- Garden
- Potential to Convert (STPP)
- Blank Canvas
- Convenient Location

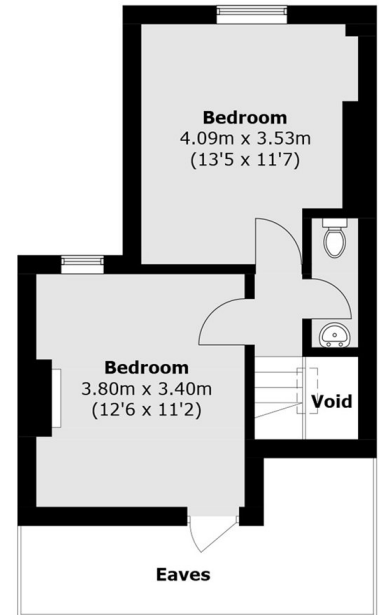
# Gilbey Road, London, SW17



**Ground Floor**



**First Floor**



**Second Floor**

Total area (approx.): 164.3 sq. m (1,768.4 sq. ft)  
(Excluding Eaves / Void)