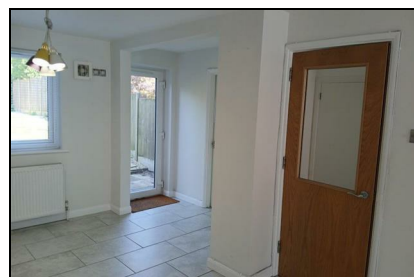


Yew Tree Court
Canterbury
CT3 1TH

£1,500 Per Calendar Month

Finn's
2 Market Street
Sandwich
CT13 9DA
t: 01304 614471
e: sandwich@finns.co.uk
www.finns.co.uk



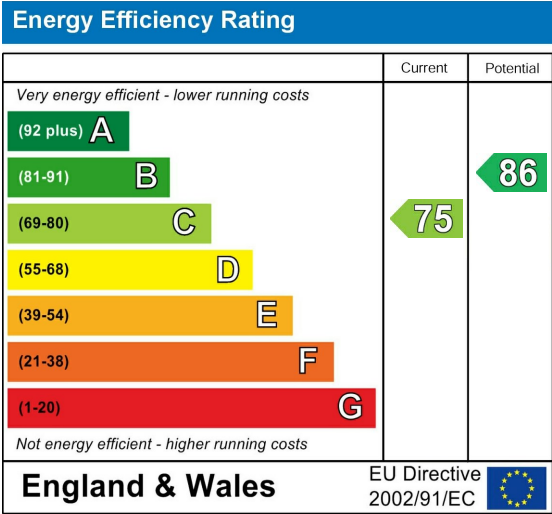
This mid terrace townhouse is located in the sought after village of Littlebourne. Accommodation is arranged over three floors and comprises, entrance hall, cloakroom and front to back kitchen/dining room on the ground floor. On the first floor there is a bedroom with en- suite bathroom and large living room with two further bedrooms and bathroom on the second floor. This family home also has an enclosed rear garden and space for two cars at the front. Further benefits include double glazing and gas central heating.

- 3 Bedroom Mid Terrace Town House
- Village location
- Parking for Two Cars
- Large Living Room
- En-suite Bathroom
- Available early November
- Sorry No Pets
- EPC C
- Canterbury City Council Band D
- Deposit £1730



Viewing: By appointment through Finn's, Sandwich
 Telephone: 01304 614471

Council Tax: D
 Date: These particulars were prepared on: 19th December 2025



Agent's Note: Wherever appliances or services, fixtures or fittings have been mentioned in these particulars they have not been tested by us. Measurements should not be relied upon. Unless specifically referred to above all fitted carpets, curtains, fixtures and fittings and garden outbuildings and ornaments are excluded from the sale. None of the statements in these particulars are to be relied upon as statements or representatives of fact. Photographs are for guidance only and do not imply items shown are included in the sale - some aspects may have changed since they were taken. No person in the employment of Finn's has authority to give any representation or warranty in relation to this property.

FINN'S CANTERBURY
 82 Castle Street
 Canterbury
 Kent CT1 2QD
 Lettings: 01227 452111

FINN'S SANDWICH
 2 Market Street
 Sandwich
 Kent CT13 9DA
 Lettings: 01304 614471

FINN'S ST NICHOLAS AT WADE
 The Packhouse
 Wantsum Way
 St Nicholas at Wade
 Kent CT7 0NE
 01843 848320

