

Fernhead Road, W9

£600,000

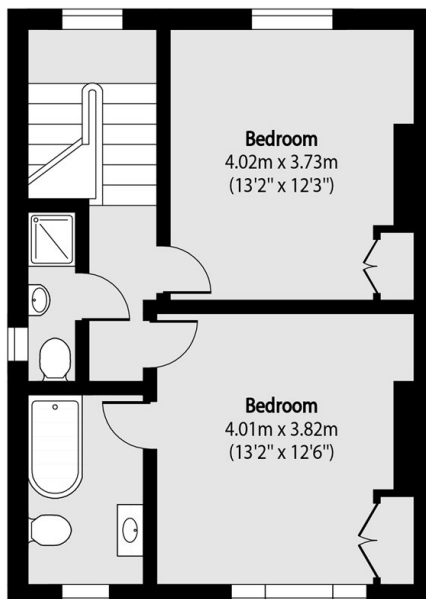
A stunning maisonette set in a Victorian conversion. This spacious property comes complete with two double bedrooms, one of which features an en suite, a bright reception room, sizable eat-in kitchen and wooden flooring throughout.

Fernhead Road offers excellent access to Queen's Park and Westbourne Park, with numerous transport links to Central London. It's conveniently located within a mile of popular destinations, such as Little Venice, Portobello, and Paddington Recreation Ground.

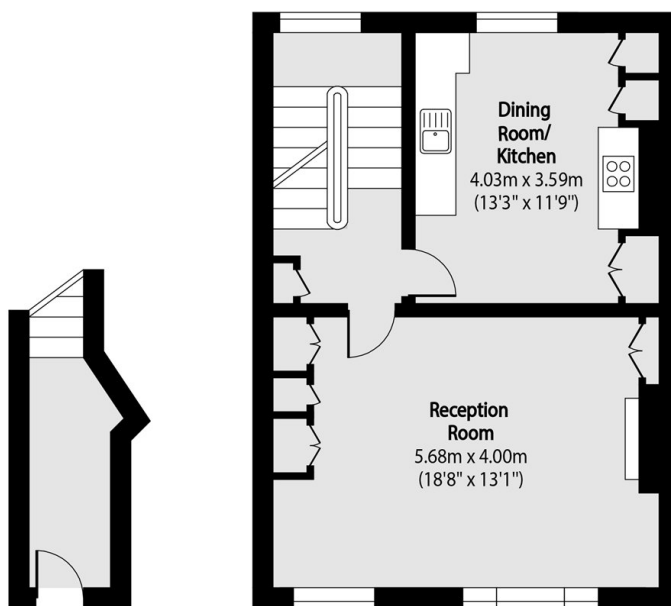
Features

- Private Entrance
- Two Bathrooms
- Ample Storage
- Wooden Flooring
- Sash Windows
- Chain Free

Fernhead Road, LONDON, W9



Second Floor



Ground Floor

First Floor

Total area (approx): 98.29 sq m (1058 sq. ft)