



---

1 Bed Flat/Apartment

15-16 Market Place  
Derby  
DE1 3QF

£850 Per Calendar Month

---

Fletcher  
& Company



15-16 Market Place  
Derby  
DE1 3QF



- A Superb Location - In Derby City Centre
- A Secure & Very Well Maintained Apartment
- One Bedroom Fully Furnished Property
- Available 22nd February 2026
- Available Long Term
- Superb City Views
- Council Tax A Band
- Parking Available Locally
- Lift To All Floors
- Viewing Firmly Advised

Second Floor - Contemporary - One Bedroom Apartment - Fully Furnished

An exceptional opportunity to rent this stylish, fully furnished one bedroom apartment, positioned on the second floor within a secure and well maintained development in the heart of Derby city centre.

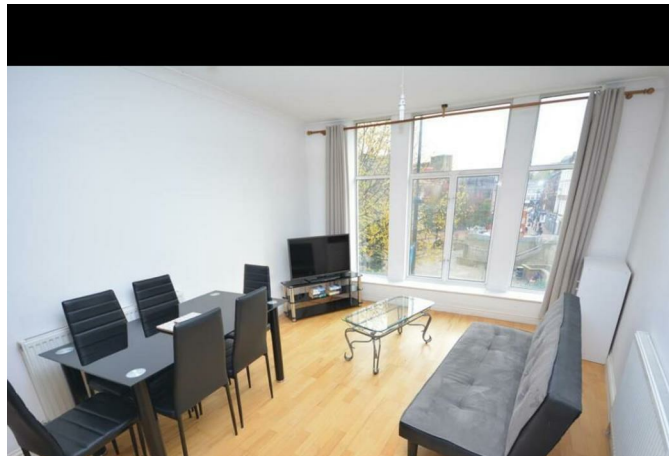
The accommodation comprises a welcoming entrance hall, a bright and spacious open plan living and kitchen area ideal for modern city living, a generous double bedroom, and a well-appointed bathroom fitted with a full contemporary suite. The apartment enjoys pleasant views across the marketplace and benefits from a secure communal entrance.

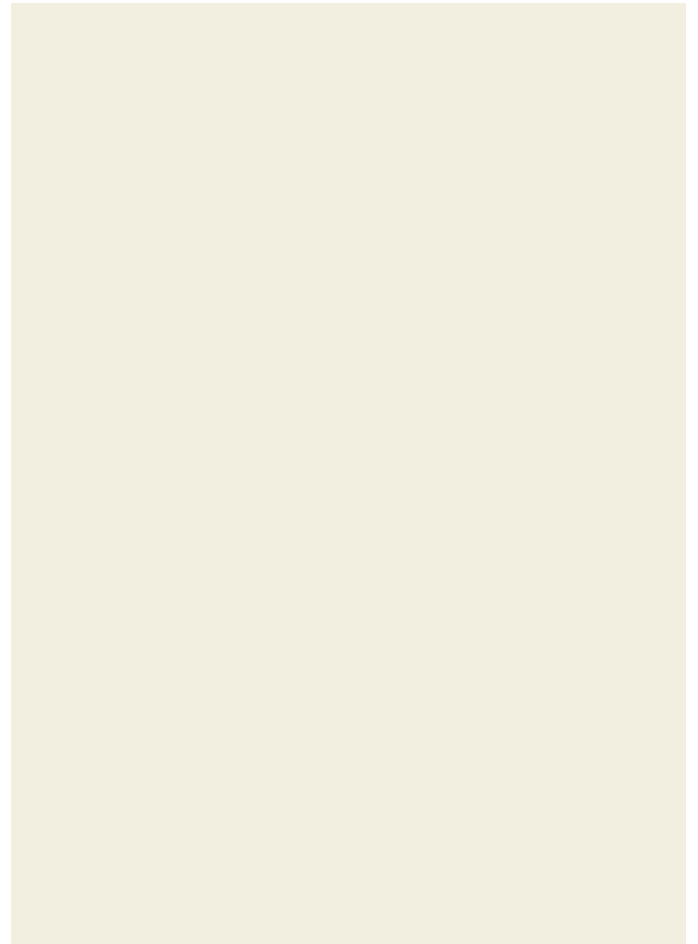
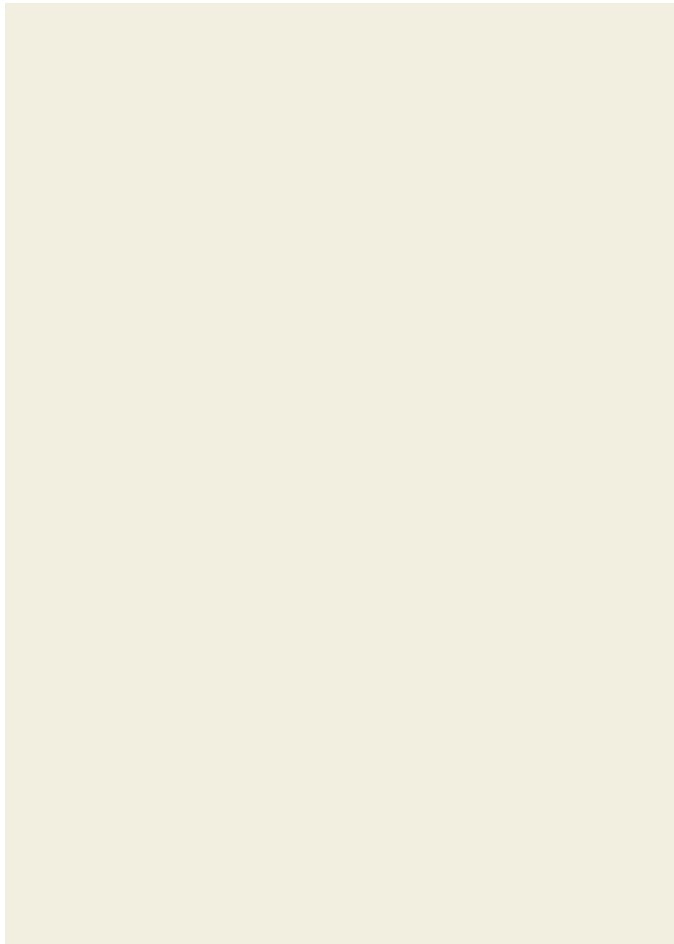
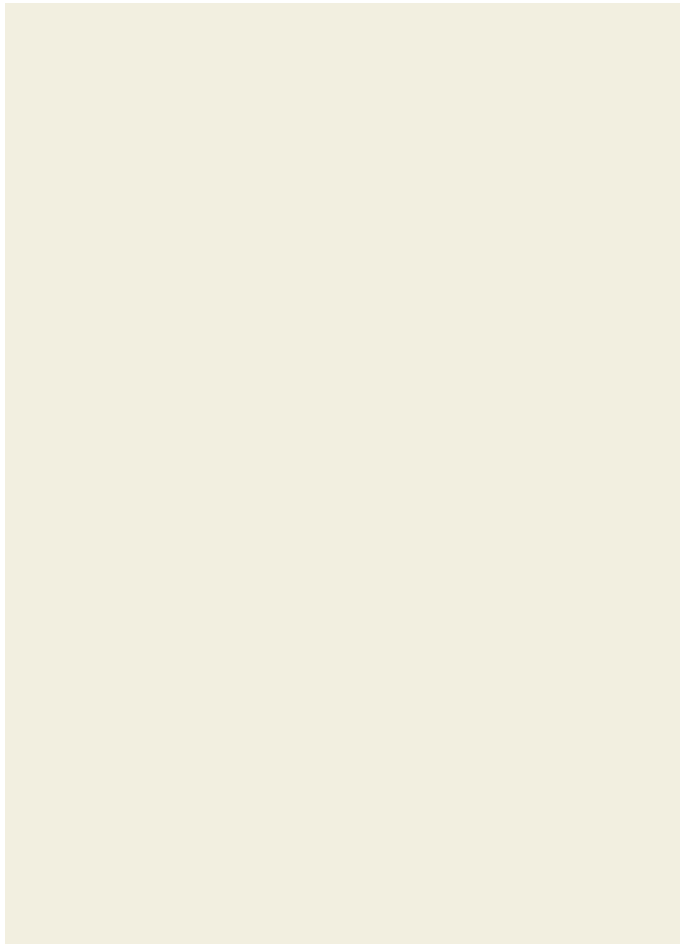
This apartment offers a rare chance to enjoy high quality city centre living in a location where rental properties are consistently in strong demand. The layout and finish make it ideally suited to a professional individual or couple seeking convenience, comfort, and style within a central setting.

#### Location

Located in the very heart of Derby city centre, the apartment is perfectly positioned to take advantage of the city's vibrant lifestyle. A wide selection of restaurants, cafés, bars, and leisure venues are all within easy walking distance, along with retail shopping, gyms, and cultural attractions. Derby Market Place, Riverside Walks, and key employment hubs are all close by.

Excellent transport links are readily accessible, including the A38 and A52, providing swift connections to Nottingham, Burton upon Trent, and the wider motorway network, making this an ideal base for commuters and city professionals alike.

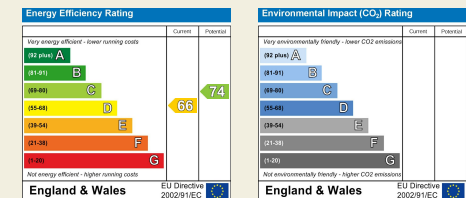




Duffield House  
Town Street  
Duffield  
Derbyshire  
DE56 4GD

T: 01332 843390

E: [duffield@fletcherandcompany.co.uk](mailto:duffield@fletcherandcompany.co.uk)  
[www.fletcherandcompany.co.uk](http://www.fletcherandcompany.co.uk)



These particulars do not constitute an offer or a contract neither do they form part of an offer or contract. The vendor does not make or give and Messrs. Fletcher & Company nor any person employed has any authority to make or give any representation or warranty, written or oral, in relation to this property. Whilst we endeavour to make our sales details accurate and reliable, if there is any point which is of particular importance to you, please contact the office and we will be pleased to check the information for you, particularly if contemplating travelling some distance to view the property. None of the services or appliances to the property have been tested and any prospective purchasers should satisfy themselves as to their adequacy prior to committing themselves to purchase.

Fletcher  
& Company