



Furze Close, High Salvington, Worthing BN13 3BJ

Guide Price **£695,000**



Property Type: Chalet

Bedrooms: 4

Bathrooms: 2

Receptions: 1

Tenure: Freehold

Council Tax Band: F

- Detached Chalet House
- Four Bedrooms
- Two Bathrooms
- Stunning Countryside Views
- Large West Facing Garden
- 0.23 Acre Plot
- Two Garages
- Off Road Parking
- Spacious & Versatile
- Chain Free

This spacious and highly versatile detached chalet-style home in sought-after High Salvington offers well-balanced accommodation across two floors, including four bedrooms and two bathrooms. Enjoying stunning, uninterrupted frontline countryside views, the property is perfectly positioned to make the most of its large west-facing rear garden — ideal for relaxing and entertaining while taking in the beautiful sunsets. Further benefits include two garages and off-road parking. Offered to the market chain-free, this is a fantastic opportunity to acquire a home in a prime location.





This spacious and highly versatile detached chalet-style home in sought-after High Salvington offers well-balanced accommodation across two floors, including four bedrooms and two bathrooms. Enjoying stunning, uninterrupted frontline countryside views, the property is perfectly positioned to make the most of its large west-facing rear garden — ideal for relaxing and entertaining while taking in the beautiful sunsets. Further benefits include two garages and off-road parking. Offered to the market chain-free, this is a fantastic opportunity to acquire a home in a prime location.

INTERNAL

Upon entering this charming chalet-style home, you are immediately struck by the sense of space and abundance of natural light. The welcoming hallway is generously proportioned and features attractive block parquet flooring, which continues seamlessly into the main living areas.

The ground floor offers versatile and well-balanced accommodation. The spacious living/dining room enjoys delightful views over the west-facing garden and front line view of the countryside, creating a bright and relaxing setting. The kitchen has ample worktop space and storage, offering an excellent opportunity for a new owner to tailor it to their own taste.

Also on this level are two well bedrooms, providing flexible living arrangements, whether for guests, family, or home working. These rooms are served by a conveniently located bathroom.

Stairs rise to the first floor, where a generous landing benefits from distant sea views. The principal bedroom is a standout feature, enjoying breathtaking views across the garden and countryside from a Juliet balcony, along with useful eaves storage. A further bedroom also features a Juliet balcony to the front aspect. These rooms are complemented by a bathroom.

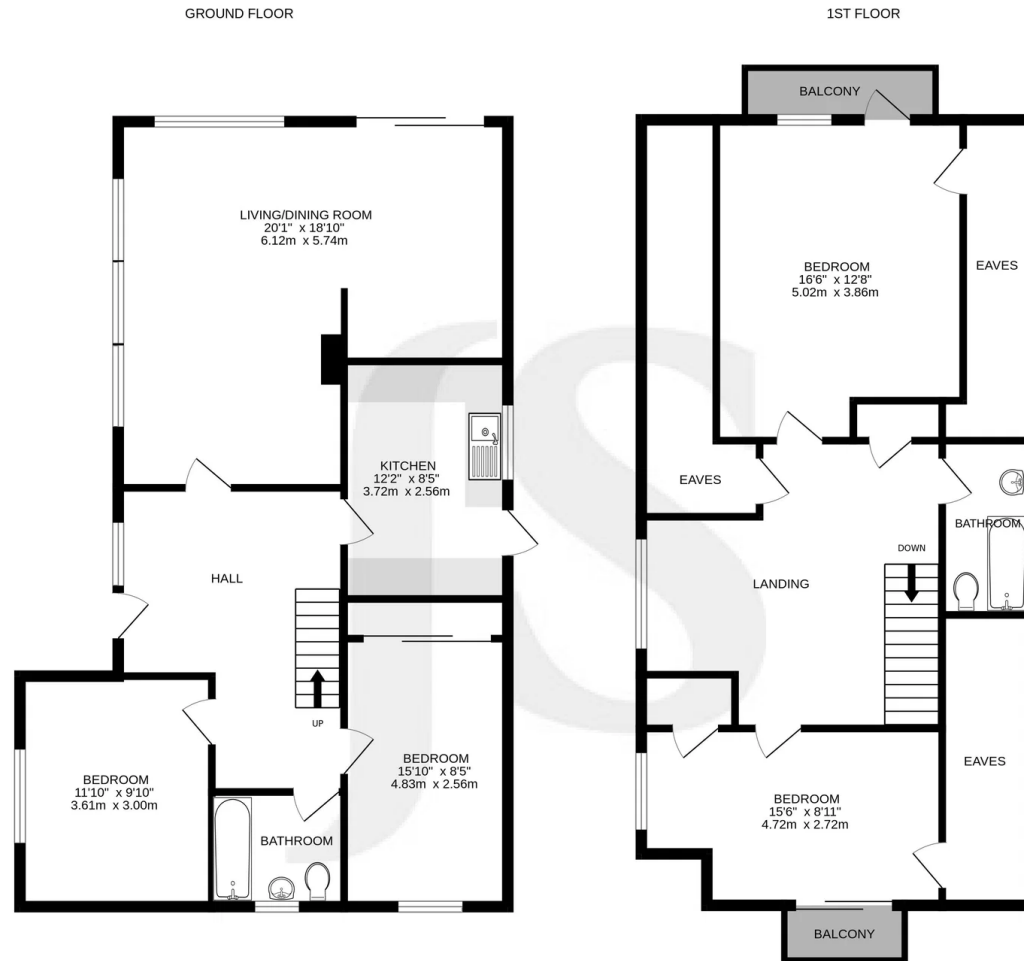
Throughout, the property has been thoughtfully arranged to maximize natural light and make the most of the countryside views, creating a warm and inviting atmosphere.

EXTERNAL

Externally, the property truly excels, set within a substantial west-facing plot of approximately 0.23 acres. The expansive lawned garden offers exceptional potential for landscaping and outdoor living, while providing a wonderful setting to enjoy far-reaching countryside views and evening sunsets. The outdoor space is ideal for a variety of uses, from entertaining and gardening to simply relaxing in a peaceful environment.

The property further benefits from two separate garages, both equipped with up-and-over doors, offering excellent storage or workshop potential. To the front, there is off-road parking for added convenience.





Whilst every attempt has been made to ensure the accuracy of the floorplan contained here, measurements of doors, windows, rooms and any other items are approximate and no responsibility is taken for any error, omission or mis-statement. This plan is for illustrative purposes only and should be used as such by any prospective purchaser. The services, systems and appliances shown have not been tested and no guarantee as to their operability or efficiency can be given.
Made with Metropix ©2026

Whilst we endeavour to make out properties particulars accurate and reliable, we have not carried out a detailed survey. If there is any point which is of particular importance to you, please contact the office and we will be pleased to check the information for you, particularly if you are contemplating travelling some distance. Whilst every effort has been made to ensure that any floorplans are correct and drawn as accurately as possible, they are to be used for layout and identification purposes only and are not drawn to scale. The services, where applicable, including electrical equipment and other appliances have not been tested and no warranty can be given that they are in working order, even where described in these particulars. Carpets, curtains, furnishing, gas fires, electrical goods/ fittings or other fixtures, unless expressly mentioned, are not necessarily included with the property.



Energy Efficiency Rating		Current	Potential
Very energy efficient - lower running costs			
(92 plus)	A		
(81-91)	B		
(69-80)	C		79
(55-68)	D	56	
(39-54)	E		
(21-38)	F		
(1-20)	G		
Not energy efficient - higher running costs			
England & Wales		EU Directive 2002/91/EC	