



Castles

OFFERS IN EXCESS OF

£425,000

Lopen Road

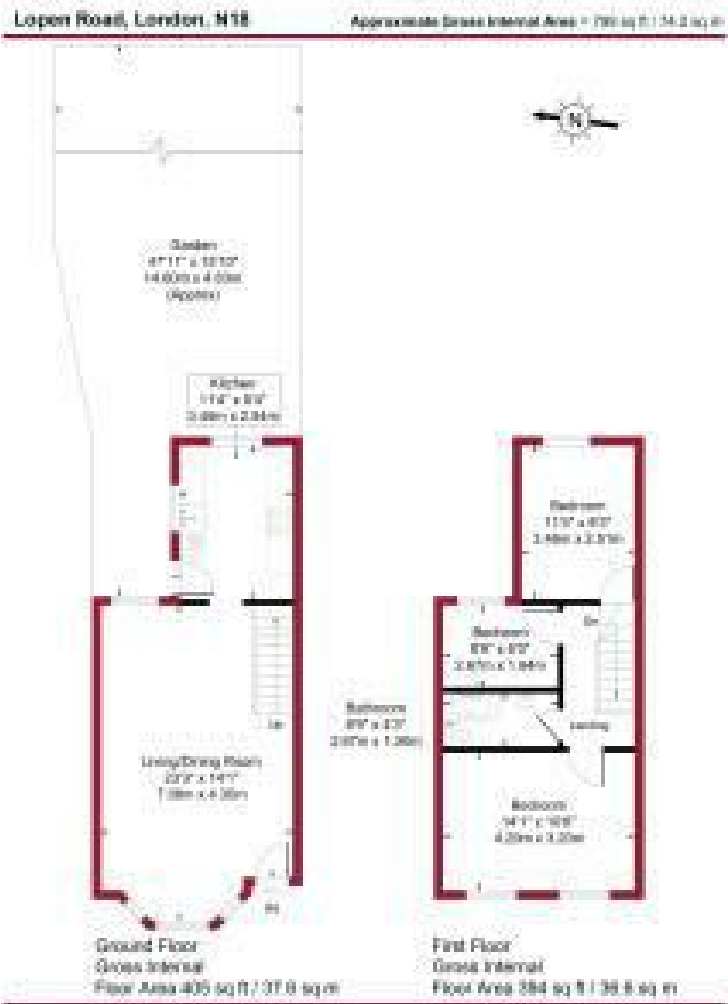
London, N18 1PX

PROPERTY SUMMARY

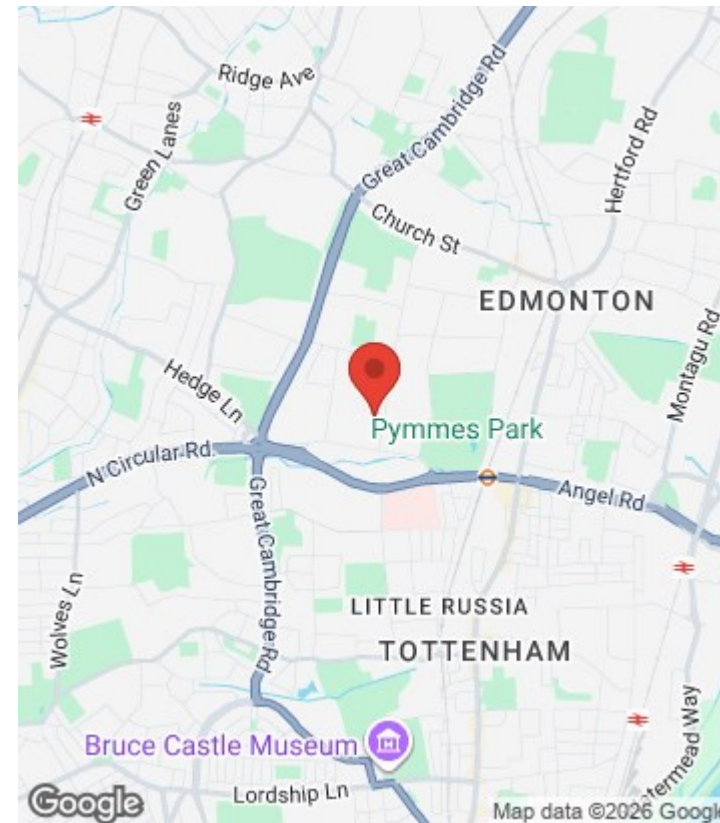
A three bedroom Victorian Terraced property situated within 1/2 mile of Silver Street BR Station and A406/A10 Road links. The property comprises of Reception and kitchen to ground floor with a further Three bedrooms and bathroom to first floor, It also has features to include, 47ft rear garden, gas central heating, double glazing and is offered for sale on a chain free basis.







For a guide to the area please scan this code for more information



House - Terraced

Freehold

Council:

Council Tax Band: C

Agents Note: Whilst every care has been taken to prepare these particulars, they are for guidance purposes only. All measurements are approximate and are for general guidance purposes only and whilst every care has been taken to ensure their accuracy, they should not be relied upon and potential buyers/tenants are advised to recheck the measurements



OFFICE ADDRESS

438 Hertford Road
 Edmonton
 London
 N9 8AB

OFFICE DETAILS

020 8804 8123
 edmonton@castles.london
<https://www.castles.london/>

