



ASKING PRICE

£475,000

Oaklands Lane

Westerham, TN16 3DP

PROPERTY SUMMARY

GUIDE PRICE £475,000 - £500,000

Situated on this sought-after road in Biggin Hill, this well-presented three bedroom detached family home overlooks fields to the front, benefits from a garage via own driveway and a well designed rear garden with pond, patio and well stocked borders. Further benefits include a conservatory, a recently replaced boiler and a new kitchen. An early viewing is advised

EPC: D

Freehold

COUNCIL TAX - E

Construction - Traditional brick

Mains Services - Gas, Electricity, Sewerage and metered Water supply

Heating System - Gas radiators

Broadband - Talk Talk

Mobile coverage - up to 1800 mbps

Restrictive covenants - No

3



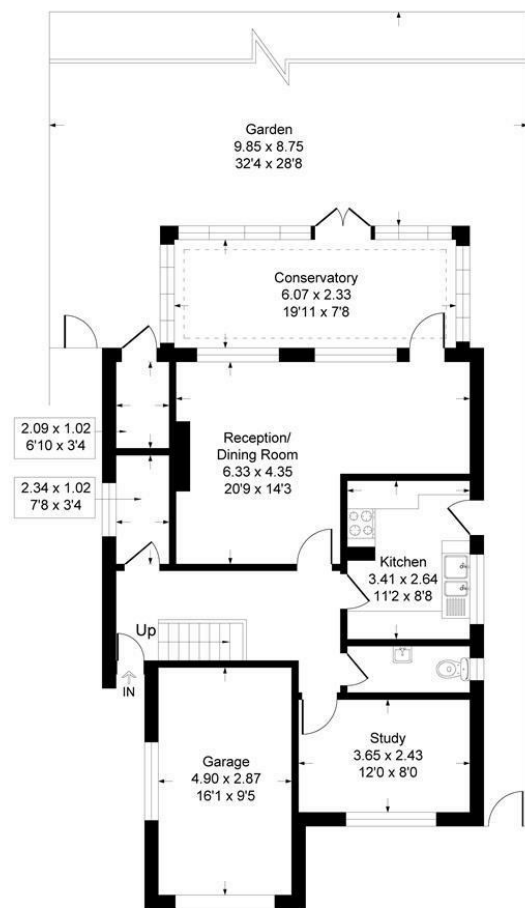
1



1







Ground Floor

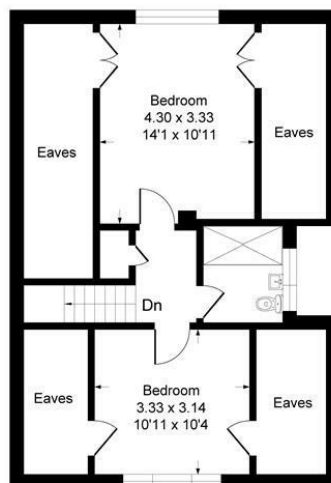
Oaklands Lane, TN16

Approximate Gross Internal Area

110.3 sq m / 1187 sq ft

Garage = 14.0 sq m / 151 sq ft

Total = 124.3 sq m / 1338 sq ft



First Floor

This plan is for layout guidance only. Not drawn to scale unless stated. Windows and door openings are approximate. Whilst every care is taken in the preparation of this plan, please check all dimensions, shapes and compass bearings before making any decisions reliant upon them.
Produced By Planpix

LOCAL AUTHORITY

Bromley

TENURE

Freehold

EPC RATING

D

COUNCIL TAX BAND

E

VIEWINGS

By prior appointment only

Energy Efficiency Rating		
	Current	Potential
Very energy efficient - lower running costs		
(92 plus) A		
(81-91) B		
(69-80) C		
(55-68) D		
(39-54) E	56	70
(21-38) F		
(1-20) G		
Not energy efficient - higher running costs		
England & Wales	EU Directive 2002/91/EC	

Agents Note: Whilst every care has been taken to prepare these particulars, they are for guidance purposes only. All measurements are approximate and are for general guidance purposes only and whilst every care has been taken to ensure their accuracy, they should not be relied upon and potential buyers/tenants are advised to recheck the measurements

OFFICE ADDRESS

1&2 The Grange
Westerham
Kent
TN16 7AH

OFFICE DETAILS

01959 587 460
infowh@sinclairhammelton