

Location:

Key points:

- Newly refurbished
- Short walk to Chiswick High Road
- Close to Acton Town station
- Close to Acton High Street
- First floor flat

Do Better:

Acton
lettings@astonrowe.co.uk

57-59 Churchfield Road,
Acton, London, W3 6AY

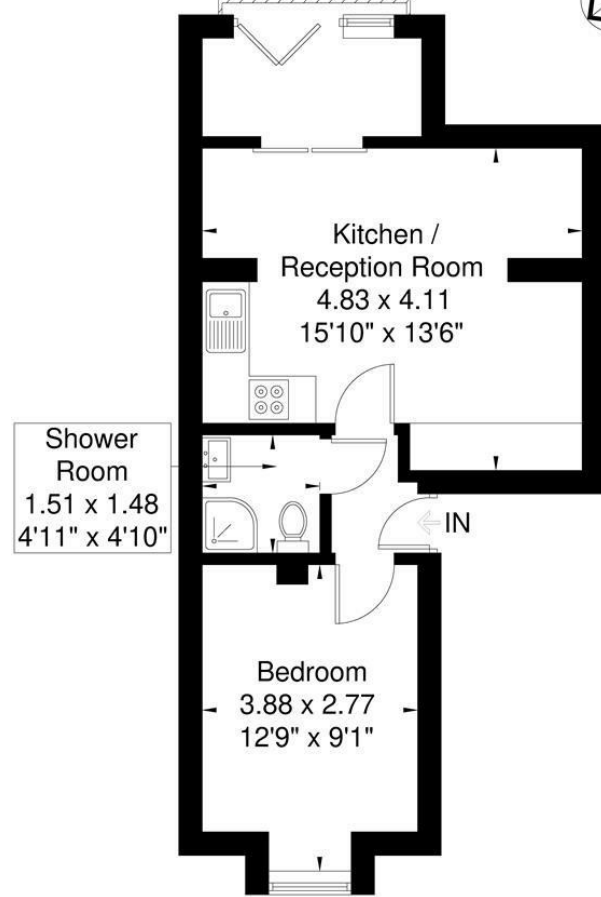
020 8992 3600

Aston Rowe



Berrymead Gardens

Approximate Gross Internal Area = 37 sq m / 398 sq ft



First Floor

Although every attempt has been made to ensure accuracy, all measurements are approximate. The floorplan is for illustrative purposes only and not to scale.
© www.prspective.co.uk

To Let: £1,795 Per Month

Berrymead Gardens, London W3 8AB

Energy Efficiency Rating		Environmental Impact (CO ₂) Rating	
Current	Potential	Current	Potential

England & Wales EU Directive 2002/91/EC

- 1 Reception Rooms
- 1 Bedrooms
- 1 Bathrooms



Presenting a newly constructed one-bedroom period conversion, conveniently situated just a brief stroll from the Acton Town Tube. Perfect for couples or single professionals seeking modern living in a prime location. This charming property boasts engineered rustic oak flooring throughout, complementing the contemporary aesthetic.

The open-plan kitchen reception area, illuminated by a bay window that floods the space with natural light. The modern kitchen is equipped with integrated appliances, offering both style and functionality for effortless culinary endeavours.

Located on a prominent corner location of Berrymead Gardens, the property offers superb accessibility to Acton town piccadilly and district line and the A40 for motorists.

The current tenant says:
The property offers superb accessibility to the Acton Town tube with the District and Piccadilly line and the A40 for motorists.

What's better:

Newly constructed one-bedroom period conversion, easy access to Chiswick High Road or Acton High Street

