



Burlington Road, TW7

£2,995 Per calendar month

A fully refurbished five bedroom family home offering bright living space, two ground floor bedrooms, modern interiors, private garden, garage, and off street parking for two cars, combining comfort, flexibility, and practicality throughout the property.

Conveniently situated in close proximity to Osterley station on the Piccadilly line, this property is enveloped by top-notch schools, beautiful parks, and essential conveniences. It's an excellent option for families, offering outstanding connectivity and a plethora of nearby amenities.

Features

- Semi Detached House
- Five Bedrooms
- Recently Refurbished
- Two Bathrooms
- Over 1,800 Sq Ft
- Off-Street Parking



Burlington Road, TW7

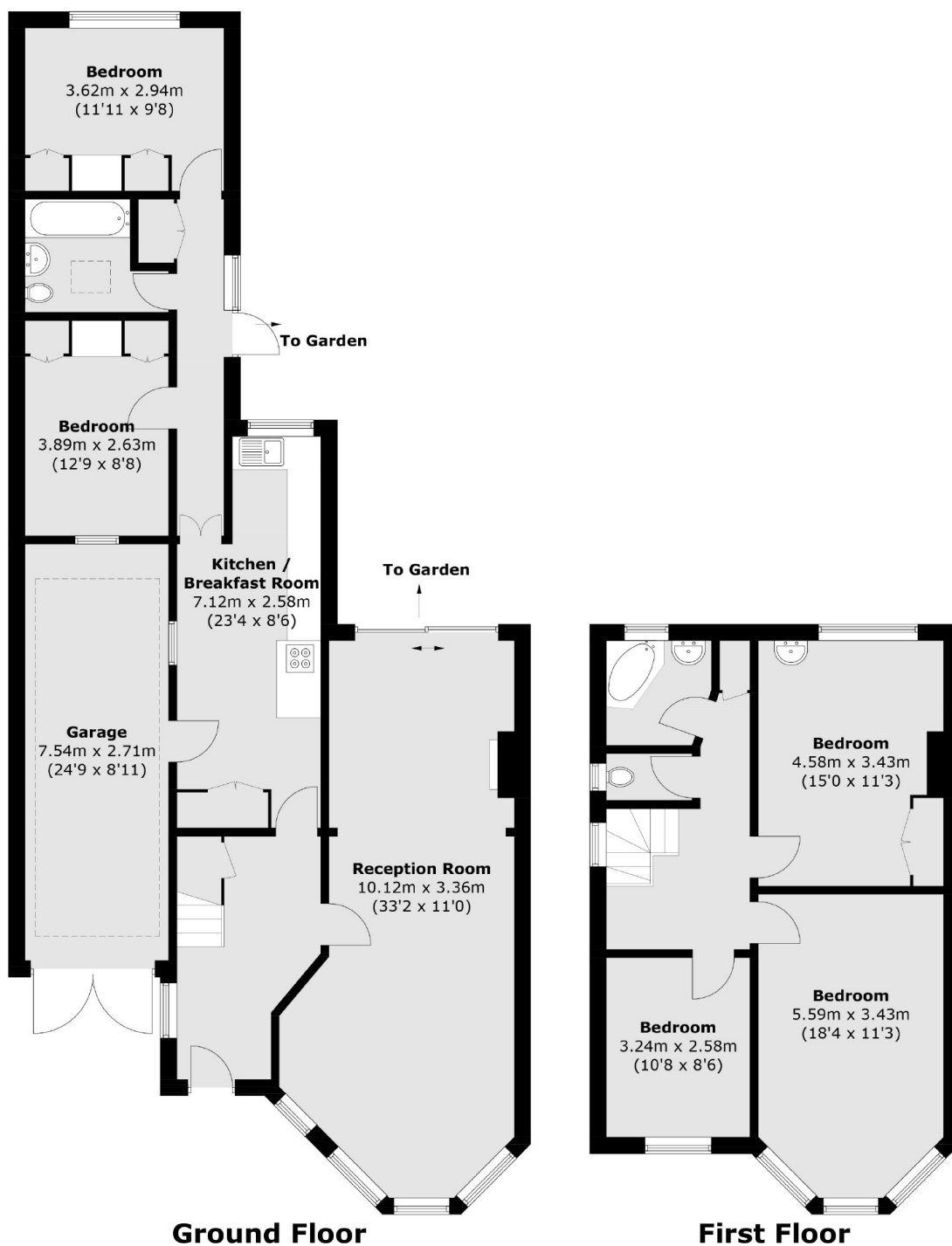
This beautifully refurbished home offers bright, spacious living areas with neutral décor, modern flooring and abundant natural light, creating a welcoming atmosphere ideal for families, entertaining guests, or relaxed everyday living throughout the ground floor.

The property features five well proportioned bedrooms, including two conveniently located downstairs, complemented by stylish bathrooms, offering flexible accommodation for growing families.

Externally, the house benefits from off street parking for two cars, an integral garage, and a private rear garden, providing excellent outdoor space, storage, and practicality for modern family lifestyles all year round enjoyment outside.



Burlington Road, Isleworth, TW7



Total area (approx.): 175.8 sq. m (1,892.2 sq. ft)
(Including Garage)

Dexters

Isleworth
568 London Road
Isleworth
TW7 4EP
Lettings
020 8560 1717

Energy Rating: D. We aim to make our particulars both accurate and reliable. However they are not guaranteed; nor do they form part of an offer or contract. If you require clarification on any points then please contact us, especially if you're traveling some distance to view. Please note that appliances and heating systems have not been tested and therefore no warranties can be given as to their good working order.

 **RICS** | Regulated
Estate Agent
and Letting Agent

dexters.co.uk