



Barty Way, Thurnham, Maidstone, , ME14 4GB

Price £840,000



Nestled on the outskirts of the charming village of Bearsted is this nearly new substantial detached house on Barty Way, constructed in 2021, offering a splendid blend of modern living and elegant design, and spanning just shy of 2,000 square foot internally.

As you enter, you are greeted by bright spacious entrance hall which leads to two inviting reception rooms, including study and generous sitting room, perfect for both entertaining guests and enjoying quiet family time. The heart of the home is the luxurious open-plan kitchen/dining room, featuring premium finishes including quartz work surfaces and benefitting from French doors leading to the rear garden. A handy utility room, and a convenient W.C. completes the ground floor. The first floor boasts the principal bedroom with dressing area and contemporary en-suite bathroom. Two further double bedrooms, one with a modern en-suite and the other benefits from the use of the contemporary family bathroom. The second floor boasts two further double bedrooms, a shower room and exceptionally spacious eaves storage. The bedroom accommodation makes this a fabulous home for a large or growing family.

The property overlooks a picturesque green space in the centre of the development, providing a serene outlook. Additionally, the convenience of a garage and a driveway accommodating two vehicles adds to the practicality of this pristine home with further parking available on the roadside opposite. The rear garden is predominantly lawned with a patio seating area and benefits from a convenient side access gate and a side door into the garage. Tenure: Freehold. EPC Rating: B. Council Tax Band: G.



LOCATION

The property's location provides easy access to the various amenities within Bearsted, including excellent transport links through the nearby mainline train station and the M2 and M20 motorways. The property is also in close proximity to the highly regarded Thurnham & Roseacre schools and less than a 10-minute walk from the scenic Village Green, which hosts a selection of fantastic pubs restaurants, and cafe. Additionally, residents can take advantage of leisure facilities such as Bearsted golf, bowls, and tennis clubs, and the beautiful grounds of both Leeds Castle and Mote Park are also close by.

ACCOMMODATION

Ground Floor:

Entrance Hall

Cloakroom

Study

Sitting Room

Kitchen/Dining Room

Utility Room

First Floor:

Principal Bedroom

• En-suite Shower Room

Bedroom Two

• En-suite Shower Room

Bedroom Three

Family Bathroom

Second Floor:

Bedroom Four

Bedroom Five

Shower Room

EXTERNALLY

Driveway


Garage

Rear Garden

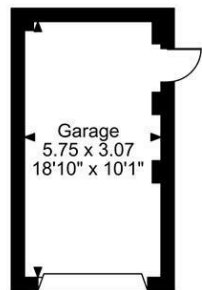
VIEWING

Strictly by arrangement with the Agent's Bearsted Office: 132 Ashford Road, Bearsted, Maidstone, Kent ME14 4LX. Tel: 01622 739574.

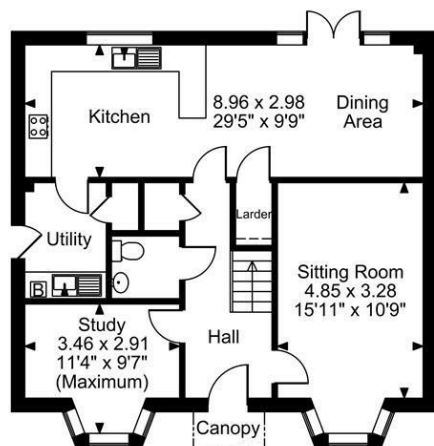
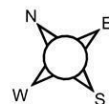
Energy Efficiency Rating

	Current	Potential
<i>Very energy efficient - lower running costs</i>		
(92 plus) A		93
(81-91) B	86	
(69-80) C		
(55-68) D		
(39-54) E		
(21-38) F		
(1-20) G		
<i>Not energy efficient - higher running costs</i>		
England & Wales	EU Directive 2002/91/EC	

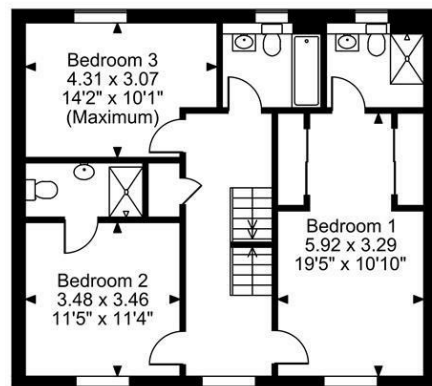
Page & Wells limited for themselves and for the vendors of this property whose agents they are give notice that: 1. These particulars do not constitute any part of, an offer or a contract. 2. All statements contained in these particulars as to this property are made without responsibility on the part of Page & Wells Limited or the Vendor. 3. None of the statements contained in these particulars as to the property is to be relied on as statements or representations of fact. 4. Any intending purchaser must satisfy himself by inspection or otherwise as to the correctness of each of the statements contained in these particulars. 5. The vendor does not make or give, and neither Page & Wells Limited nor any person in their employment has any authority to make or give any representation whatsoever in relation to this property. These particulars are supplied on the understanding that all negotiations are carried out throughout Page & Wells Limited. Properties with a reference prefixes EAA are those which Page & Wells Limited disclose an interest in accordance with the provisions of the Estates Agents Act 1979



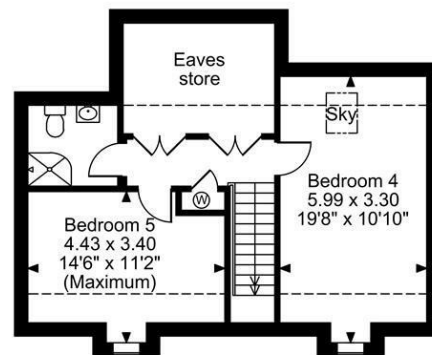
Thurnham, Maidstone
Approximate Gross Internal Area
 Main House = 1950 Sq Ft/181 Sq M
 Garage = 190 Sq Ft/18 Sq M
 Total = 2140 Sq Ft/199 Sq M



Ground Floor



First Floor



Second Floor

FOR ILLUSTRATIVE PURPOSES ONLY - NOT TO SCALE

The position & size of doors, windows, appliances and other features are approximate only.

□ □ □ □ Denotes restricted head height

© ehouse. Unauthorised reproduction prohibited. Drawing ref. dig/8645050/SS

